

320D3 GC

HYDRAULIC EXCAVATOR



Engine Power
Operating Weight

100 kW (134 hp)
20 000 kg (44,100 lb)

Cat® ALUW06DTI/8 Engine meets U.S. EPA Tier 2 Final, noncertified emission standards.



NEXT GENERATION EXCAVATORS

The Cat 320D3 GC Hydraulic Excavator gives you the ability to do more at a lower cost.

- + LOWER FUEL COSTS
- + LOWER MAINTENANCE COSTS
- + HIGHER RELIABILITY AND RETURN ON INVESTMENT

The 320D3 GC offers lower fuel and maintenance costs, new features for increased productivity, and greater durability for a longer service life and higher resale value. All that means you can do more with more profit.



THE CAT[®] 320D3 GC DIG MORE PROFIT

With improved engineering from the bucket to the tracks and everywhere in between, the **320D3 GC** gives you dependable performance, lower operating costs, and more comfort for operators. The Cat 320D3 GC is a smart choice for operations where high reliability and low cost-per-hour performance are priority.

EXPECT UP TO 20% LOWER MAINTENANCE COSTS WITH MORE UPTIME



LOWER SERVICE COSTS

A number of upgrades reduce downtime and maximize uptime, giving the 320D3 GC up to 20% lower maintenance costs than the previous comparable models. A simpler, integrated pilot system eliminates the pilot filter entirely.

SAVE TIME WITH GROUND-LEVEL ACCESS

Most service locations are accessible at ground level, and filters are grouped together, making maintenance quick and easy.

SAVE WITH INCREASED SERVICE INTERVALS

You'll save time and money with extended service intervals and fewer activities for hydraulics, filters, coolants, and fan bearings. A new hydraulic oil filter design lasts 50% longer, and the hydraulic oil service (at 6,000 hours) requires 12% less fluid.

320D2

320D3 GC

TIME IS MONEY



UP TO 20% LOWER MAINTENANCE COSTS

SAVE ON FUEL

LOWER YOUR OPERATING COSTS



FUEL CONSUMPTION AS LOW AS 11 LITERS PER HOUR

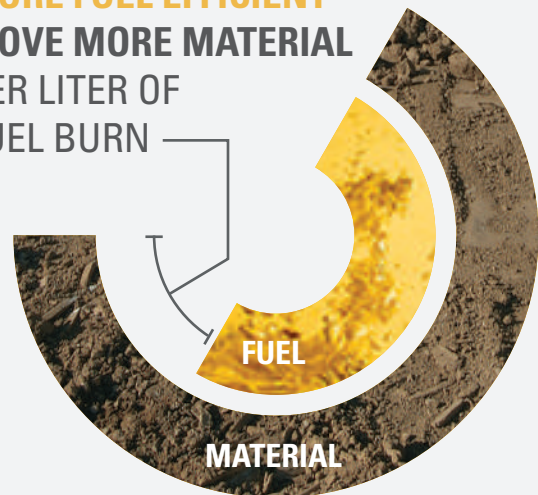
Typical fuel consumption for the 320D3 GC in earthmoving applications is between 11 to 13 liters per hour, lower than most machines in the market. A new optimized cooling system weighs 25% less and uses 50% less power. Optimized engine speed, a boom regeneration valve, and an improved hydraulic pump deliver top performance.

WORK SMART. SAVE MONEY.

Two power modes help manage fuel consumption. Power mode delivers maximum productivity in high-demand applications like truck loading and trenching. Eco mode automatically matches engine speed and hydraulic power to demand for the highest fuel efficiency in any application.

ECONOMICAL SAVINGS

MORE FUEL EFFICIENT
MOVE MORE MATERIAL
PER LITER OF
FUEL BURN



THE 320D3 GC IS THE
FUEL-EFFICIENT CHOICE
FOR YOUR BUSINESS.



MAXIMUM UPTIME AND HIGH DURABILITY

RELIABLE PRODUCTIVITY

PROVEN DURABILITY

The 320D3 GC combines proven Cat components with redesigned and simplified systems that maximize durability. This combination delivers a high resale value and the best return on investment in its class.

- + A new modified X-frame structure delivers longer life.
- + Redesigned track links last longer and increase undercarriage life.
- + A re-engineered final drive delivers longer life and greater control.

IMPROVED STICK BOOSTS PRODUCTIVITY

The boom and stick are reinforced with internal baffle plates for increased durability, and the new stick enables better lifting capacity and stability. Regeneration valves save power, and couplers allow attachments to be changed out in seconds.

PRODUCT LINK™ GETS MORE FROM YOUR MACHINE

Product Link is standard on the 320D3 GC, automatically collecting data such as location, hours, idle time, maintenance alerts, diagnostic codes, and machine health. View the data online and make smarter decisions to get the most from your machine.



SUPERIOR COMFORT AND CONTROL

Sites where excavators typically work are rugged and challenging. That's why it's important that the 320D3 GC cab protects the operator as much as possible from the fatigue, stresses, sounds, and temperatures of the job.



COMFORTABLE, EASY TO CONTROL

This ergonomically designed cab, seat, and control layout is designed for ease of use, without the strain of frequently leaning forward or stretching to reach controls.

REDUCE FATIGUE

The console, armrests, and wide vibration-damping seat have several adjustment points, allowing you to select the perfect positions for all-day comfort. Low-effort joystick controls reduce operator fatigue even further.

IMPROVED VISIBILITY

The glass area of the cab has been increased by 25%, giving you improved worksite safety and enhanced productivity. Convex profile glass improves safety further by reducing blind spots.

IMPROVED AIRFLOW

The new cab features better air circulation, greatly increasing the effectiveness of the automatic air conditioning and heat and providing all-day comfort for operators. The cab is positively pressurized, keeping dust at bay. An openable skylight comes standard.

SOUND SUPPRESSION

The cab is designed with noise reduction in mind, allowing you to work in quiet comfort. Viscous cab mounts and multi-layer, noise-damping, laminated foam mats insulate you from machine and worksite noise.



INSTRUMENT CLUSTER

The two-gauge instrument cluster provides all the information you need in a simple, compact package. The display is small enough to have no impact on your visibility, but large enough to be easily read at a glance. Five warning indicators are included, and the display shows fuel status, coolant temperature, service hours, hydraulic lock status, and current engine mode.

STORAGE AND POWER

Abundant storage space – coat hook, beverage holder, literature holder, document holding space, and rear storage compartment – makes it easy to keep your work area uncluttered. The cab is also equipped with a 12-volt power supply with standard sockets, USB connector, a “cigar lighter” style charging socket, and ample interior lighting.



SAFETY FEATURES

BUILT WITH SAFETY IN MIND



STAY SAFE EVERY DAY

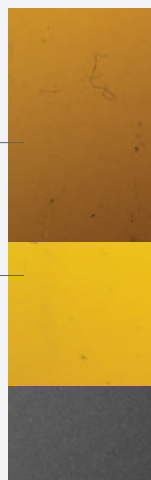
FACT:

#1 cause of construction accidents: **FALLS***

49% OF FALLS RESULT
IN SERIOUS INJURY

30% OF FALLS RESULT
IN DEATH

FALLS



320D3 GC

**GROUND-LEVEL
MAINTENANCE**
HELPS PREVENT FALLS

*<https://www.ncbi.nlm.nih.gov/pmc/articles/PMC4962179/>

GROUND-LEVEL SAFETY FEATURES

Falls are the #1 cause of construction worksite accidents, but most maintenance on the machine is done at ground level. There is also an emergency engine stop switch located at ground level.

SAFER STEPS

Access to the service platform is provided by large steps on the track frame and storage box for an easy and safe climb. The platform is built from stamped anti-skid plating which will last for the entire life of the machine, and countersunk bolts prevent snags and tripping.

FAN SHROUD AND LOCKOUT LEVER

The cooling fan is fully enclosed, preventing any accidental touches during maintenance. A hydraulic activation lever safely locks out all hydraulic functions.

OPTIONAL ISO-CERTIFIED ROPS CAB

The 320D3 GC cab is built with ISO-certified rollover protection, and FOPS mounting bosses are built in. The cab is equipped with an emergency escape hatch, and the front glass is tempered for additional impact safety.

INCREASE YOUR PRODUCTIVITY AND PROFIT WITH CAT ATTACHMENTS

When your machine can do more, you can make more profit. Increase the versatility of your machine with any of the variety of Cat attachments. Each Cat attachment is designed to fit the weight and horsepower of Cat excavators for improved performance, safety, and stability.



BUCKETS



HYDRAULIC HAMMERS



TECHNICAL SPECIFICATIONS

See cat.com for complete specifications.

ENGINE		
Engine Model	ALUW06DTI	
Net Power – ISO 9249:2007	92 kW	123 hp
Engine Power – ISO 14396:2002	100 kW	134 hp
Bore	104 mm	4 in
Stroke	113 mm	4 in
Displacement	5.76 L	351 in ³

- Net power available at the flywheel when the engine is equipped with fan, air cleaner, muffler, and alternator with engine speed at 1,700 rpm.

HYDRAULIC SYSTEM		
Main System – Maximum Flow – Implement	400 L/min (200 × 2 pumps)	106 gal/min (53 × 2 pumps)
Maximum Pressure – Equipment – Implement	35 000 kPa	5,075 psi
Maximum Pressure – Travel	35 000 kPa	5,075 psi
Maximum Pressure – Swing	25 000 kPa	3,625 psi
Pilot System – Maximum Pressure	3900 kPa	566 psi
Boom Cylinder – Bore	125 mm	5 in
Boom Cylinder – Stroke	1260 mm	50 in
Stick Cylinder – Bore	130 mm	5 in
Stick Cylinder – Stroke	1504 mm	59 in
Bucket Cylinder – Bore	115 mm	5 in
Bucket Cylinder – Stroke	1104 mm	43 in

SWING MECHANISM		
Swing Speed	10.00 rpm	
Maximum Swing Torque	62 kN•m	45,581 lbf-ft

MACHINE WEIGHTS		
Operating Weight*	19 800 kg	43,600 lb
Operating Weight**	20 000 kg	44,100 lb

*Standard undercarriage, Reach boom, R2.25 (7'5") stick, 0.92 m³ (1.20 yd³) GD bucket, 600 mm (24") HD triple grouser shoes and 3.7 mt (8,160 lb) counterweight.

**Standard undercarriage, Reach boom, HD R2.5 (8'2") stick, GD 1.0 m³ (1.31 yd³) bucket, 600 mm (24") HD triple grouser shoes and 3.7 mt (8,160 lb) counterweight.

SERVICE REFILL CAPACITIES		
Fuel Tank Capacity	350 L	92.5 gal
Cooling System	19 L	5 gal
Engine Oil (with filter)	18 L	4.8 gal
Swing Drive	6 L	1.6 gal
Final Drive (each)	5 L	1.3 gal
Hydraulic System (including tank)	230 L	60.8 gal
Hydraulic Tank	110 L	29.1 gal

DIMENSIONS		
Boom	Reach 5.7 m (18'8")	
Stick	Stick R2.25 (7'5")	
Bucket	GD 1.0 m³ (1.31 yd³)	
Shipping Height (top of cab)	3100 mm	10'4"
Handrail Height	2915 mm	9'7"
Shipping Length	9520 mm	31'3"
Tail Swing Radius	2750 mm	9'0"
Counterweight Clearance	1020 mm	3'4"
Ground Clearance	450 mm	1'6"
Track Length	4080 mm	13'5"
Length to Center of Rollers	3270 mm	10'9"
Track Gauge – Standard Undercarriage	2200 mm	7'3"
Transport Width – 600 mm (24") Shoes	2800 mm	9'2"

WORKING RANGES AND FORCES		
Boom	Reach 5.7 m (18'8")	
Stick	Stick R2.25 (7'5")	
Bucket	GD 1.0 m³ (1.31 yd³)	
Maximum Digging Depth	5970 mm	19'7"
Maximum Reach at Ground Level	9140 mm	30'0"
Maximum Cutting Height	9110 mm	29'11"
Maximum Loading Height	6250 mm	20'6"
Minimum Loading Height	2920 mm	9'7"
Maximum Depth Cut for 2440 mm (8'0") Level Bottom	5640 mm	18'6"
Maximum Vertical Wall Digging Depth	5350 mm	17'7"
Bucket Digging Force (ISO)	134 kN	30,120 lbf
Stick Digging Force (ISO)	112 kN	25,180 lbf

STANDARD & OPTIONAL EQUIPMENT

Standard and optional equipment may vary. Consult your Cat dealer for details.

ENGINE	STANDARD	OPTIONAL
Diesel engine, ALUW06DTI/8 – mechanical governor – emits equivalent to U.S. EPA Tier 2, noncertified	•	
Two selectable power modes: STD and ECO	•	
One-touch low idle with automatic engine speed control (AEC)	•	
Two stage fuel filtration system with water separator and indicator	•	
4000 m (13,120 ft) altitude capability with derate from 3000 m (9,840 ft)	•	
52°C (126°F) high-ambient cooling capacity without derate	•	
-18°C (0°F) cold start capability	•	
-32°C (-25°F) cold start capability (available with attachment kit)		•
85 amp alternator	•	
Radial sealed double element air filter	•	
Air precleaner		•
Mechanical fuel priming pump	•	
Biodiesel capability up to B20	•	
HYDRAULIC SYSTEM	STANDARD	OPTIONAL
Hydraulic boom and stick regeneration circuits	•	
Automatic two-speed travel		•
Boom and stick drift reduction valve	•	
High performance hydraulic return filter (capsule filter type)	•	
Hammer return filter circuit		•
Medium-pressure auxiliary circuit		•
UNDERCARRIAGE AND STRUCTURES	STANDARD	OPTIONAL
Grease lubricated track link	•	
Tie down points on base frame	•	
Center track guiding guard	•	
Segmented track guiding guard		•
3.7T (8,160 lb) counterweight	•	
600 mm (24") triple grouser track shoes (8.5 mm/0.3" thick) – standard	•	
600 mm (24") triple grouser track shoes (10 mm/0.4" thick) – HD		•
BOOMS, STICKS, AND LINKAGES	STANDARD	OPTIONAL
5.7 m (18'8") Reach boom	•	
2.25 m (7'5") Reach stick	•	
2.5 m (8'2") HD Reach stick		•
Bucket linkage, B1 family without lifting eye	•	
TECHNOLOGY	STANDARD	OPTIONAL
Cat Product Link	•	

ELECTRICAL SYSTEM	STANDARD	OPTIONAL
2 × 1,000 CCA maintenance-free batteries	•	
Centralized electrical disconnect switch	•	
90 seconds programmable time delay working lights (halogen); storage box mounted (one), cab mounted (two), boom mounted LH (one)	•	
SERVICE AND MAINTENANCE	STANDARD	OPTIONAL
Engine oil, fuel, and hydraulic oil filters grouped for ease of maintenance	•	
S•O•S SM sampling ports	•	
Radiator screen for radiator/oil cooler to prevent plugging by debris	•	
SAFETY AND SECURITY	STANDARD	OPTIONAL
Rearview mirrors; handrail mounted (one), cab handhold mounted (one)	•	
Bolt-free service platform with anti-skid plate	•	
Neutral lever (lockout) for all controls	•	
Ground-level accessible engine shutoff switch in cab	•	
Signaling/warning horn	•	
Right-hand handrail and handhold	•	
OPERATOR ENVIRONMENT	STANDARD	OPTIONAL
Sound-suppressed cab with viscous mounts	•	
ROPS cab		•
FOGS guards		•
Openable skylight	•	
Openable tempered front upper windshield with assist device	•	
Rear window emergency exit	•	
Removable tempered lower windshield with in-cab storage bracket	•	
Fully adjustable mechanical suspension seat, console, and armrest	•	
51 mm (2") seat belt	•	
Two gauge cluster (monitor)	•	
Automatic air conditioner with positive pressurized cab	•	
One 12V power supply with sockets (maximum 10 Amp)	•	
Roll-down sun screen		•
Washable floor mat	•	
Interior utilities (Interior lighting, cigar lighter type socket, coat hook, beverage holder, literature holder, document holding space, rear storage compartment)	•	
Control pattern changer		•

Not all features are available in all regions. Please check with your local Cat dealer for specific offering availability in your area.
For additional information, refer to the Technical Specifications brochures for the 320D3 GC available at www.cat.com or your Cat dealer.

AEXQ3066-00 (11-20)
(India)

For more complete information on Cat products, dealer services, and industry solutions, visit us on the web at www.cat.com.

Materials and specifications are subject to change without notice. Featured machines in photos may include additional equipment. See your Cat dealer for available options.

©2020 Caterpillar. All Rights Reserved. CAT, CATERPILLAR, LET'S DO THE WORK, their respective logos, Product Link, S•O•S, "Caterpillar Corporate Yellow", the "Power Edge" and Cat "Modern Hex" trade dress as well as corporate and product identity used herein, are trademarks of Caterpillar and may not be used without permission.

www.cat.com www.caterpillar.com

