

## Main Specifications

### Main Specifications

Rated Load / kg	3,000
Operating Weight / kg	10,000
Bucket Capacity / m <sup>3</sup>	1.4 – 2.5
Wheelbase / mm	2,740
Overall Dimension / mm	7,322 * 2,348 * 3,182
Max. Drawbar Force / kN	98
Breakout Force / kN	114
Dump Clearance / mm	2,990
B-Pin Height / mm	3,917

### Transmission

Transmission Type	Countershaft, Power Shift
Transmission Gears	F4/R2
Torque Converter Type	Single Stage, 3 Elements
Make & Model	Caterpillar & SEM TR100
Forward I / Reverse I	7.8 / 9.7
Forward II / Reverse II	14 / 30
Forward III / Reverse III	25 / NA
Forward IV / Reverse IV	39 / NA

### Axle

Main Drive Type	Spiral Bevel Gear, Single Stage
Final Drive Reduction Type	Planetary Type, Single Stage
Rear – Oscillating +/-	± 12°

### Engine

Model	WDEC WP4.6NG135E502
Rated Power / kW / HP	99 / 133
Rated Speed / r/min	2,150
Displacement / L	4.6

### Implement Hydraulic

Implement System Type	Open Center
Boom Raise Time / s	4.7
Hydraulic Cycle Time / s	8.3
System Pressure Setting / MPa	18

### Brake System

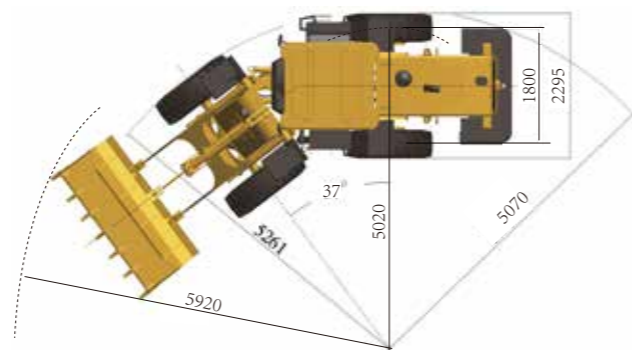
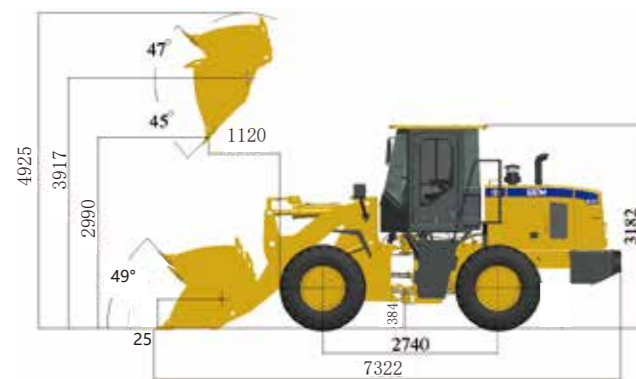
Service Brake	Dry & Caliper, Air to Oil
Parking Brake	Drum / Shoe

### Steering System

System Type	Shared Flow
Steering Pump Type	Gear Pump
System Pressure Setting / MPa	14
Steering Angle (L / R)	37° ± 1°

### Tires

Size	17.5–25
Type	Bias
Layer	12
Textured Type	L – 3



► Note: the above dimensions are based on the standard configuration.

# SEM636D CEV Stage IV Wheel Loader



※ Featured machines in photos may include optional equipment

## SEM636D CEV Stage IV

### Product Advantages

- **High Productivity:** Performance series bucket with 110% fill factor, load more materials easily. Dump height is best in class
- **Best-in-class Reliability and Durability:** Made in-house transmission, well validated chassis and main components make machine more reliable
- **Excellent Fuel Economy:** Optimal match between engine and torque converter, hydraulic flow sharing technology make machine highly efficient and consume less fuel
- **Outstanding Operator Comfort:** Large interior space & AC cabin provide better visibility, premium seat with 6-stage adjustments enable operators work for longer hours comfortably

Caterpillar (Qingzhou) Ltd. Address: No.12999 Nanhuan Road,Caterpillar Industrial Park, Qingzhou City,Shandong Province, Zip Code: 262500 P.R.China

© Materials and specifications are subject to change without notice. Featured machines in photos may include optional equipment. Contact your SEM dealer for available options.

© 2020 Caterpillar (Qingzhou) Ltd. All Rights Reserved. SEM Machinery, SEM, their respective logos, trade dress as well as corporate and product identity used herein, are trademarks of Caterpillar (Qingzhou) Ltd. and may not be used without permission.

Version: January 2021 - India

Website

<http://www.semmachinery.com>



A Caterpillar Brand