

Main Specifications

Main Specifications

Rated Load / kg	5,000
Operating Weight / kg	17,190
Bucket Capacity / m ³	2.6 – 5.0
Wheelbase / mm	3,300
Overall Dimension / mm	8,279 * 2,963 * 3,463
Max. Drawbar Force / kN	174
Breakout Force / kN	178
Dump Clearance / mm	3,110
B-Pin Height / mm	4,162

Engine

Model	WDEC WP7G231E501
Rated Power / kW / HP	170 / 228
Rated Speed / r/min	1,950
Displacement / L	7.5

Implement Hydraulic

Implement System Type	Open Center
Boom Raise Time / s	5.1
Hydraulic Cycle Time / s	9.3
System Pressure Setting / MPa	18

Transmission

Transmission Type	Countershaft, Power Shift
Transmission Gears	F4 / R4
Torque Converter Type	Single Stage, 3 Elements
Make & Model	Caterpillar & TR200
Forward I / Reverse I	7.6 / 7.6
Forward II / Reverse II	14 / 14
Forward III / Reverse III	22 / 22
Forward IV / Reverse IV	37 / 37

Brake System

Service Brake	Dry & Caliper, Air to oil
Parking Brake	Drum / Shoe

Steering System

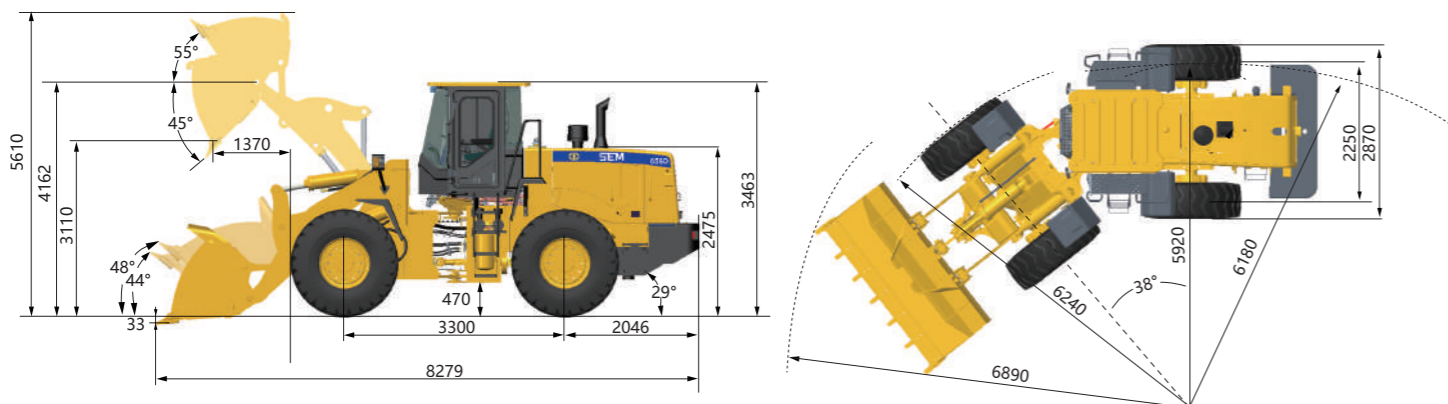
System Type	Single Load Sensing
Steering Pump Type	Piston Pump
System Pressure Setting / MPa	16
Steering Angle (L / R)	38° ± 1°

Axle

Main Drive Type	Spiral Bevel Gear, Single Stage
Final Drive Reduction Type	Planetary Type, Single Stage
Rear – Oscillating +/-	± 11°
Make & Model	Caterpillar & SEM SO32

Tires

Size	23.5 – 25
Type	Bias
Layer	16
Textured Type	L – 3



► Note: the above dimensions are based on the standard configuration.

SEM656D CEV Stage IV Wheel Loader



※ Featured machines in photos may include optional equipment

Product Advantages

- **High Productivity:** Performance series bucket with 110% fill factor, load more materials easily. Dump height is best in class
- **High Reliability:** Made in-house countershaft transmission and heavy duty axle make machines highly reliable
- **Outstanding Operator Comfort:** Premium cabin with large interior space, superior visibility and joystick for easy operation
- **Best-in-class Serviceability:** Centralized lubrication & filter locations for easy service and accessibility

SEM656D CEV Stage IV

Website

<http://www.semmachinery.com>



A Caterpillar Brand

Caterpillar (Qingzhou) Ltd. Address: No.12999 Nanhuan Road, Caterpillar Industrial Park, Qingzhou City, Shandong Province, Zip Code: 262500 P.R.China

© Materials and specifications are subject to change without notice. Featured machines in photos may include optional equipment. Contact your SEM dealer for available options.

© 2020 Caterpillar (Qingzhou) Ltd. All Rights Reserved. SEM Machinery, SEM, their respective logos, trade dress as well as corporate and product identity used herein, are trademarks of Caterpillar (Qingzhou) Ltd. and may not be used without permission.

Version: January 2021 - India