

322

HYDRAULIC EXCAVATOR



Engine Power

ISO 14396

100 kW (134 hp)

ISO 14396 (DIN)

136 hp (metric)

Operating Weight

20 900 kg (46,200 lb)



CAT® EXCAVATORS

Cat® excavators offer you more value than ever.

- + RELIABLE AND DURABLE
- + HIGH PRODUCTION
- + LOW OWNING AND OPERATING COSTS

If you're ready to take your business to the next level, put Cat excavators to work for you.



MEET THE CAT® 322

PROFIT-DRIVEN POWERHOUSE
FOR HEAVY LOADS

When you need muscle, precision, and cost control in one machine, the 322 delivers. Its responsive electrohydraulic controls and rugged design keep you productive on the tough jobs, while low fuel consumption and streamlined maintenance help you stay profitable every step of the way.

CAT 322 HYDRAULIC EXCAVATOR

PROFIT-DRIVEN POWERHOUSE FOR HEAVY LOADS



BUILT TO MOVE MORE

The turbocharged Cat C3.6 engine delivers powerful swing torque, rapid cycle times, and deep digging capabilities for high-volume production. Smart ECM and precision hydraulics work together to optimize fuel use and accelerate cycle times, boosting productivity while lowering operating costs.

DESIGNED FOR UPTIME

Shared Cat components and extended service intervals simplify maintenance, reduce downtime, and lower operating costs. Heavy-duty structures, a reliable Cat engine, and an efficient electrohydraulic system deliver enhanced fuel efficiency, increased uptime, and improved durability.

RUGGED. RELIABLE. DURABLE.

The 1.1 m³ SD and 1.2 m³ GD buckets are designed to handle tough materials, such as rock and gravel, with ease. With two robust undercarriage options, proven powertrain, and high swing torque, the machine delivers fast cycles and reliable performance in demanding conditions.



BUILT TO LAST

Every hour on the job matters, and the Cat 322 is built to keep you working longer. From reinforced front structures and robotically welded booms to hydraulic lines routed inside the frame, every detail is designed to stand up to tough terrain.

BUILT TO WORK

A heavy-duty counterweight and rugged undercarriage give you the stability to dig, lift, and swing with confidence, while advanced cooling systems and auto warm-up features keep performance steady in extreme temperatures.

BUILT FOR PEACE OF MIND

With built-in durability from the ground up, you'll spend less time worrying about breakdowns and more time getting the job done.





STRENGTH MEETS SPEED

From grading to truck loading, the 322 helps you move more material, faster. Increased swing torque, reinforced structures, and multiple power modes make this machine a reliable performer on any jobsite.

STABLE, STRONG BASE

Match your work with a choice of 1.2 m³ General-Duty bucket or 1.1 m³ Severe-Duty bucket. Reinforced structures and a heavy-duty boom and stick ensure performance shift after shift.

FLEXIBLE PERFORMANCE

Increased swing torque helps you load trucks and dig trenches with precision, while multiple power modes let you tailor performance to the job. Whether you're moving earth or breaking rock, the 322 works harder so you don't have to.

MORE WORK. LESS FUEL.

LOW FUEL CONSUMPTION



MAXIMUM OUTPUT

The turbocharged Cat C3.6 engine works seamlessly with an advanced electrohydraulic system to deliver smooth, precise operation while burning less fuel.

EFFICIENT POWER

Eco mode helps you save without sacrificing digging or lifting power, while automatic engine speed control cuts fuel use when loads are light. The electronic tandem hydraulic pumps deliver high efficiency with low friction losses.

SMART HYDRAULICS

Smart pump design and regeneration circuits further reduce fuel burn while keeping cycle times fast. The result: low operating costs shift after shift.



REDUCE MAINTENANCE TIME AND COSTS

LESS TIME SERVICING. MORE TIME WORKING.

Maintenance on the Cat 322 is fast, safe, and clean thanks to thoughtful design details throughout the machine.

EASY ACCESS

Ground-level S-O-SSM ports make fluid sampling quick and convenient, while grouped filters and an electric priming pump help reduce contamination risk. Anti-skid platforms with textured grip surfaces provide secure footing, ensuring confident, stable access during every service routine.

LONG-LIFE COMPONENTS

An advanced hydraulic oil filter design extends component life, while two-stage fuel filtration and anti-rust tank coatings protect against low-quality fuel.

ECONOMICAL OWNERSHIP

Longer intervals, like 500-hour oil changes, and maintenance-free batteries keep your schedule on track.

MORE UPTIME

Add in high-efficiency air filtration and a durable pre-cleaner for dusty environments, and you have a machine built for uptime.

ULTIMATE OPERATOR COMFORT

Sites where excavators work are typically rugged and challenging. That's why it's important that the 322 cab helps protect the operator as much as possible from fatigue, stresses, sounds, and temperatures of the job.

- + EXCELLENT JOBSITE VISIBILITY FROM THE CAB
- + SMART STORAGE FOR CUPS, PHONES, LUNCHBOXES AND LARGER ITEMS
- + BLUETOOTH® CONNECTIVITY AND USB PORTS FOR CONVENIENCE



ALL DAY COMFORT
WORK SMARTER.
RIDE EASIER.

Comfort fuels productivity, and the Cat 322 delivers it in every detail. The spacious cab is designed around the operator, with an ergonomic seat, automatic climate control, and reduced noise and vibration.



SMOOTH TO RUN
SIMPLE TO OPERATE



EASY TO LEARN

Starting and running the 322 is easy, even for new operators. With responsive controls and operator training, it is easy to master and a joy to operate.

INTUITIVE CONTROLS

Low-effort controls reduce fatigue during long shifts, while precision electrohydraulics keep every movement smooth and accurate.

OPERATOR-FRIENDLY FEATURES

With push-button ignition, an intuitive 8-inch touchscreen, and customizable joystick patterns, the machine adapts to the way you work. Automatic features like hammer stop protect your tools, so you can focus on the task at hand with confidence and control.



SAFELY HOME EVERY DAY

SAFETY YOU CAN COUNT ON

OPERATOR AWARENESS

The Cat 322 puts operator safety first. A cab with excellent visibility, standard mirrors, and optional camera keeps you aware of your surroundings.

SECURE STEPS AND REDUCE SLIPS

Serrated steps, anti-skid plating, and ISO 2867:2011 compliant handrails help you climb in and out securely, while bright seatbelts and wide entries help make every shift safe.

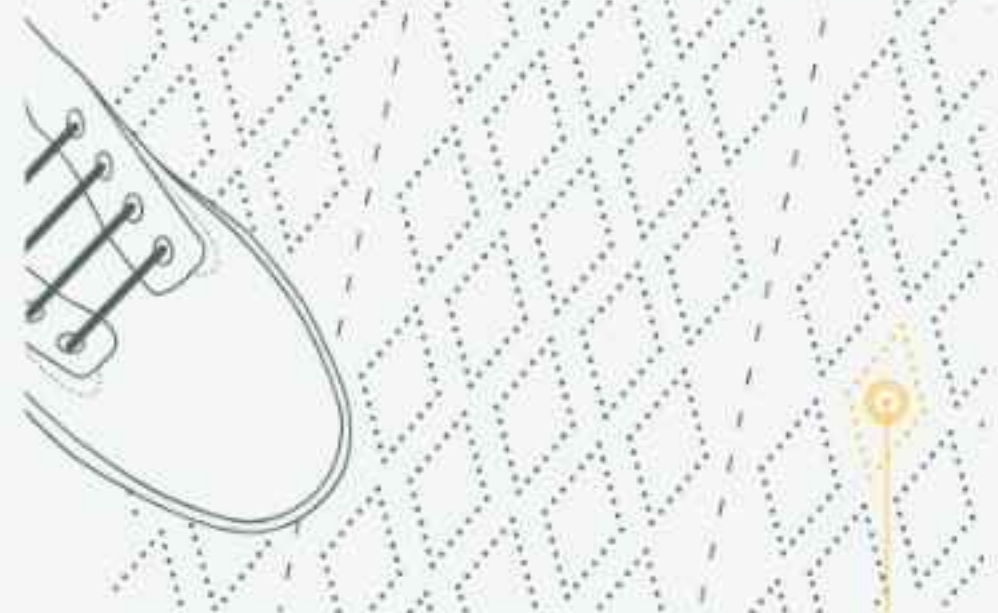
ALL-AROUND PROTECTION

Optional guards, alarms, and reinforced structures add extra layers of protection. Paired with LED lighting for round-the-clock jobs, this machine is designed to help every operator go home safe at the end of the day.

1,000 WAYS TO STAY SAFE.

FACT:

SLIPPING IS ONE OF THE BIGGEST CONTRIBUTORS TO WORKPLACE INJURIES.*



OUR ANTI-SKID PLATES FEATURE

1,000+ INDIVIDUAL PERFORATIONS FOR BETTER TRACTION

*SOURCE: [HTTPS://WWW.OSHA.GOV/OC/E-GRANT_MATERIALS/FY07/SH-14625-07/SLIPSTRIPS/FALLS.PPT](https://www.osha.gov/oc/e-grant_materials/fy07/SH-14625-07/SLIPSTRIPS/FALLS.PPT)

INCREASE YOUR PRODUCTIVITY AND PROFIT WITH CAT ATTACHMENTS

When your machine can do more, you can make more profit. Increase the versatility of your machine with any of the variety of Cat attachments. Each Cat attachment is designed to fit the weight and horsepower of Cat excavators for improved performance and stability.



BUCKETS



HYDRAULIC HAMMERS





MORE THAN A MACHINE

BUILT AROUND YOUR SUCCESS

When you buy Cat equipment, you get so much more than the machine. You also get the support of a world-class dealer network, backed by a range of flexible solutions, technology, tools, and more.

TESTED TOUGH

A Customer Value Agreement (CVA) from your Cat dealer helps you do more and worry less. A CVA simplifies machine ownership and maintenance, adds the security of expert dealer support and gives you peace of mind from effective equipment health management.

PROTECTED SYSTEMS

A broad range of repair options give you choices that work with your needs, budget, and timeline. Every repair is performed by expert Cat technicians. You'll receive smart repair advice, a timely, accurate quote, and service that gets your machine back into action quickly.

DEPENDABLE DURABILITY

Genuine Cat Parts deliver the highest level of reliability and productivity. Order direct from your Cat dealer or shop online at parts.cat.com.

PROVEN POWER

Count on Cat Financial to provide the best finance and extended protection solutions for your business. For more than 30 years, we have helped our customers succeed through financial service excellence. Services to help you save time, save money, and get back on the job.

VISIONLINK™

TAKES THE GUESSWORK OUT OF MANAGING YOUR EQUIPMENT



VisionLink takes the guesswork out of managing your entire fleet – regardless of size or equipment manufacturer.* Review equipment data from your desktop or mobile device to maximize uptime and optimize assets. With interactive dashboards, VisionLink makes it easier for operations of all sizes to make informed decisions that lower costs, simplify maintenance, and improve security on your jobsite. With different subscription-level options, your Cat dealer can help you determine what you need to connect your fleet and manage your business.

*Data field availability can vary by equipment manufacturer.

TECHNICAL SPECIFICATIONS

See cat.com for complete specifications.

ENGINE		
Engine Model	Cat® C3.6	
Net Power – ISO 9249	96 kW	129 hp
Net Power – ISO 9249 (DIN)	131 hp (metric)	
Engine Power – ISO 14396	100 kW	134 hp
Engine Power – ISO 14396 (DIN)	136 hp (metric)	
Bore	98 mm	4 in
Stroke	120 mm	5 in
Displacement	3.6 L	220 in ³
Biodiesel Capability	Up to B20 ⁽¹⁾	
<ul style="list-style-type: none"> • Noncertified emission engine. • Recommended for use up to 4000 m (13,120 ft) altitude with engine power derate above 3000 m (9,840 ft). • Advertised power is tested per the specified standard in effect at the time of manufacture. • Net power advertised is the power available at the flywheel when the engine is equipped with fan, air intake system, exhaust system and alternator. • Engine speed at 2,000 rpm. 		
⁽¹⁾ Cat engines are compatible with diesel fuel blended with the following lower-carbon intensity fuels** up to: <ul style="list-style-type: none"> ✓ 100% biodiesel FAME (fatty acid methyl ester)* ✓ 100% renewable diesel, HVO (hydrogenated vegetable oil) and GTL (gas-to-liquid) fuels Refer to guidelines for successful application. Please consult your Cat dealer or "Caterpillar Machine Fluids Recommendations" (SEBU6250) for details. *For use of blends higher than 20% biodiesel, consult your Cat dealer. **Tailpipe greenhouse gas emissions from lower-carbon intensity fuels are essentially the same as traditional fuels.		
HYDRAULIC SYSTEM		
Main System – Maximum Flow – Implement	442 L/min	117 gal/min
Maximum Pressure – Equipment – Implement	35 000 kPa	5,075 psi
Maximum Pressure – Travel	35 000 kPa	5,075 psi
Maximum Pressure – Swing	25 000 kPa	3,625 psi
SWING MECHANISM		
Swing Speed	11.5 rpm	
Maximum Swing Torque	69 kN-m	50,560 lbf-ft
MACHINE WEIGHTS		
Operating Weight	20 700 kg	45,700 lb
4.25 m (13'11") Medium undercarriage, 5.7 m (18'8") Reach boom, Heavy Duty (HD) R2.5 (8'2") stick, 1.10 m ³ (1.44 yd ³) Severe Duty (SD) bucket, 600 mm (24") triple grouser track shoes and 4000 kg (8,820 lb) counterweight.		
Operating Weight	20 900 kg	46,200 lb
4.45 m (14'7") Long undercarriage, 5.7 m (18'8") Reach boom, HD R2.5 m (8'2") stick, 1.10 m ³ (1.44 yd ³) SD bucket, 600 mm (24") triple grouser track shoes and 4000 kg (8,820 lb) counterweight.		

SERVICE REFILL CAPACITIES		
Fuel Tank	370 L	97.7 gal
Cooling System	22 L	5.8 gal
Engine Oil (with filter)	11 L	2.9 gal
Swing Drive	6 L	1.6 gal
Final Drive (each)	5 L	1.3 gal
Hydraulic System (including tank)	218 L	57.6 gal
Hydraulic Tank	115 L	30.4 gal
DIMENSIONS		
Boom	Reach 5.7 m (18'8")	
Stick	HD Reach 2.5 m (8'2")	
Bucket	SD 1.1 m ³ (1.44 yd ³)	
Undercarriage	Medium 4.25 m (13'11")	
Shipping Height – Top of Cab	3360 mm	10.7 ft
Handrail Height	3030 mm	9.9 ft
Machine Length (with boom, stick, bucket installed)	9520 mm	31.4 ft
Tail Swing Radius	2830 mm	9.3 ft
Counterweight Clearance (without shoe lug height)	1030 mm	3.3 ft
Ground Clearance (without shoe lug height)	440 mm	1.4 ft
Track Length	4250 mm	13.4 ft
Track Length – Length to Center of Rollers	3450 mm	10.7 ft
Track Gauge – Undercarriage	2380 mm	7.2 ft
Transport Width – 600 mm (24") shoes	2980 mm	9.2 ft
WORKING RANGES AND FORCES		
Boom	Reach 5.7 m (18'8")	
Stick	HD Reach 2.5 m (8'2")	
Bucket	SD 1.1 m ³ (1.44 yd ³)	
Undercarriage	Medium 4.25 m (13'11")	
Maximum Digging Depth	6310 mm	20.7 ft
Maximum Reach at Ground Level	9470 mm	31.1 ft
Maximum Cutting Height	9330 mm	30.6 ft
Maximum Loading Height	6280 mm	20.6 ft
Minimum Loading Height	2580 mm	8.5 ft
Maximum Depth Cut for 2440 mm (8 ft) Level Bottom	6120 mm	20 ft
Maximum Vertical Wall Digging Depth	5630 mm	18.5 ft
Bucket Digging Force (ISO)	128 kN	28,710 lbf
Stick Digging Force (ISO)	109 kN	24,500 lbf

STANDARD AND OPTIONAL EQUIPMENT

Standard and optional equipment may vary. Consult your Cat® dealer for details.

ENGINE	STANDARD	OPTIONAL
Cat® C3.6 single turbo diesel engine	•	
Three selectable modes: Power, Smart, Eco	•	
One-touch low idle with automatic engine speed control (AEC)	•	
Two stage fuel filtration system with water separator and indicator	•	
4000 m (13,120 ft) altitude capability with derate from 3000 m (9,840 ft)	•	
Up to 52° C (126° F) high-ambient cooling capacity with derate above 48° C (118° F)	•	
Down to -10° C (14° F) cold start capability	•	
100 Amp alternator	•	
Radial sealed double element air filter	•	
Electric fuel priming pump	•	
HYDRAULIC SYSTEM	STANDARD	OPTIONAL
Electronic main control valve, hammer ready	•	
Boom and stick regeneration circuits	•	
Automatic hydraulic warm-up	•	
Automatic two-speed travel	•	
High performance hydraulic return filter	•	
Hydraulic auxiliary lines (hammer)		•
CAB	STANDARD	OPTIONAL
Sound suppressed cab with viscous mounts	•	
Rollover Protective Structure (ROPS)		•
Operator Protective Guards (OPG)		•
Front windshield guard (wire mesh)		•
Mechanical-suspension seat with headrest and armrest angle adjustment	•	
High-resolution 203 mm (8") LCD touchscreen monitor	•	
Keyless push to start engine control	•	
AM/FM Bluetooth® radio with USB/Auxiliary ports	•	
Cup holder and storage compartments	•	
Upper radial wiper with washer	•	
Openable steel hatch	•	
Washable floor mat	•	
51 mm (2") orange seat belt	•	
UNDERCARRIAGE AND STRUCTURES	STANDARD	OPTIONAL
4.25 m (13'11") Medium undercarriage		•
4.45 m (14'7") Long undercarriage		•
Grease lubricated track link	•	
Segmented track guiding guard		•
Center track guiding guard		•
Bottom guard	•	
4000 kg (8,820 lb) counterweight	•	
600 mm (24") triple grouser track shoes (10 mm/0.39" thick)	•	

BOOM, STICKS, AND LINKAGE	STANDARD	OPTIONAL
5.7 m (18'8") Reach boom	•	
2.5 m (8'2") HD Reach stick	•	
Bucket linkage, B1 family with lifting eye	•	
ELECTRICAL SYSTEM	STANDARD	OPTIONAL
Two 750 CCA maintenance free batteries	•	
Centralized electrical disconnect switch	•	
LED chassis and cab lights	•	
LED left-side boom light	•	
LED right-side boom light		•
CAT TECHNOLOGY	STANDARD	OPTIONAL
VisionLink™	• ¹	
SERVICE AND MAINTENANCE	STANDARD	OPTIONAL
Grouped engine oil, fuel, and hydraulic oil filters	•	
S-O-S™ ports	•	
Radiator screen for radiator/oil cooler to prevent plugging by debris	•	
SAFETY AND SECURITY	STANDARD	OPTIONAL
Rearview mirrors; handrail mounted (one), cab handhold mounted (one)	•	
Bolt free service platform with anti-skid plate	•	
Neutral lever (lock out) for all controls	•	
Ground-level accessible secondary engine shutoff switch in cab	•	
Handrail and handhold	•	
Signaling/warning horn	•	
Rearview camera		•
Travel alarm		•

¹ Provides core telematics data to manage health, maintenance insights, and condition monitoring. Other plans available for more comprehensive data reporting. Consult your Cat dealer for details.

For more complete information on Cat products, dealer services and industry solutions, visit us on the web at www.cat.com.

Materials and specifications are subject to change without notice. Featured machines in photos may include additional equipment. See your Cat dealer for available options.

© 2025 Caterpillar. All Rights Reserved. CAT, CATERPILLAR, LET'S DO THE WORK, VisionLink, their respective logos, "Caterpillar Corporate Yellow," the "Power Edge" and Cat "Modern Hex" trade dress as well as corporate and product identity used herein, are trademarks of Caterpillar and may not be used without permission.

www.cat.com www.caterpillar.com

AEXQ4490-00 (12-2025)
Build Number: 05A
(India)

