

324

HYDRAULIC EXCAVATOR



| | |
|-------------------------|-----------------------|
| Engine Power | |
| ISO 14396 | 112 kW (150 hp) |
| ISO 14396 (DIN) | 152 hp (metric) |
| Operating Weight | 22 700 kg (50,100 lb) |



CAT® EXCAVATORS

Cat® excavators offer you more value than ever.

- + RELIABLE AND DURABLE
- + HIGH PRODUCTION
- + LOW OPERATING COSTS

If you're ready to take your business to the next level, put Cat excavators to work for you.



MEET THE CAT® 324

HEAVY-DUTY MUSCLE BUILT
TO OUTPERFORM.

The Cat 324 is built to handle high-production workloads with the perfect balance of brute strength and refined control. Its powerful Cat C7.1 engine, high-flow hydraulics, and advanced electrohydraulic system give you the muscle to move heavy material fast, without burning through your budget.

CAT 324 HYDRAULIC EXCAVATOR

HEAVY-DUTY MUSCLE BUILT TO OUTPERFORM



STRONG AND RESPONSIVE

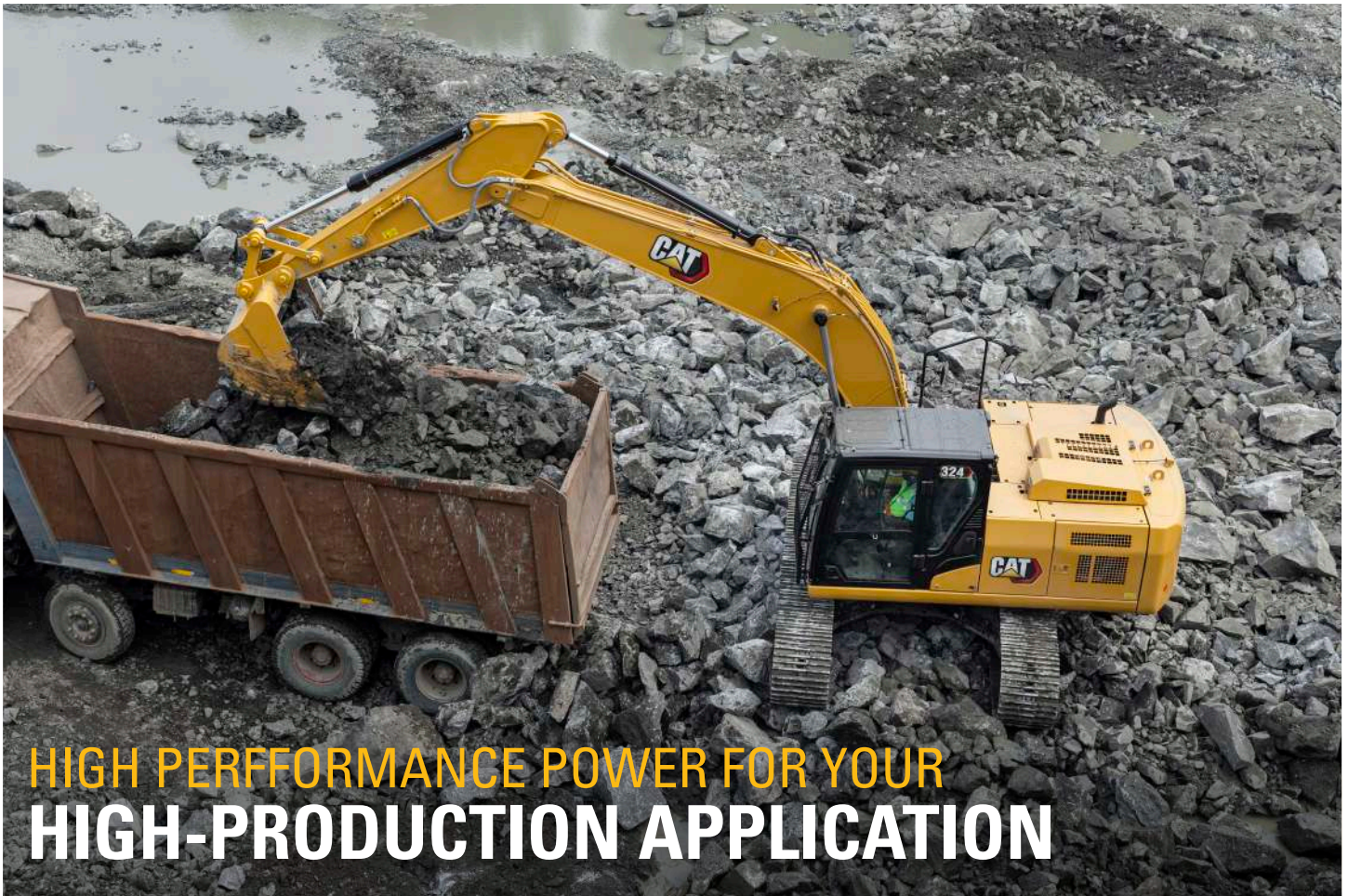
The proven Cat C7.1 engine delivers consistent power and fast load response, even under pressure or at high altitudes. Advanced electrohydraulics ensure precise control for grading, trenching, and lifting in demanding applications.

LESS DOWNTIME. MORE UPTIME.

Shared Cat components and extended service intervals make ownership simple and predictable. You'll spend less time on maintenance and more time on the job, supported by Caterpillar's unmatched global parts availability and dealer network.

BUILT TO LAST

Heavy-duty structures and components are designed to withstand challenging terrain and extend machine longevity. With matched bucket options for quarry or earthwork and proven system reliability, the machine is designed for long, productive shifts in rugged conditions.



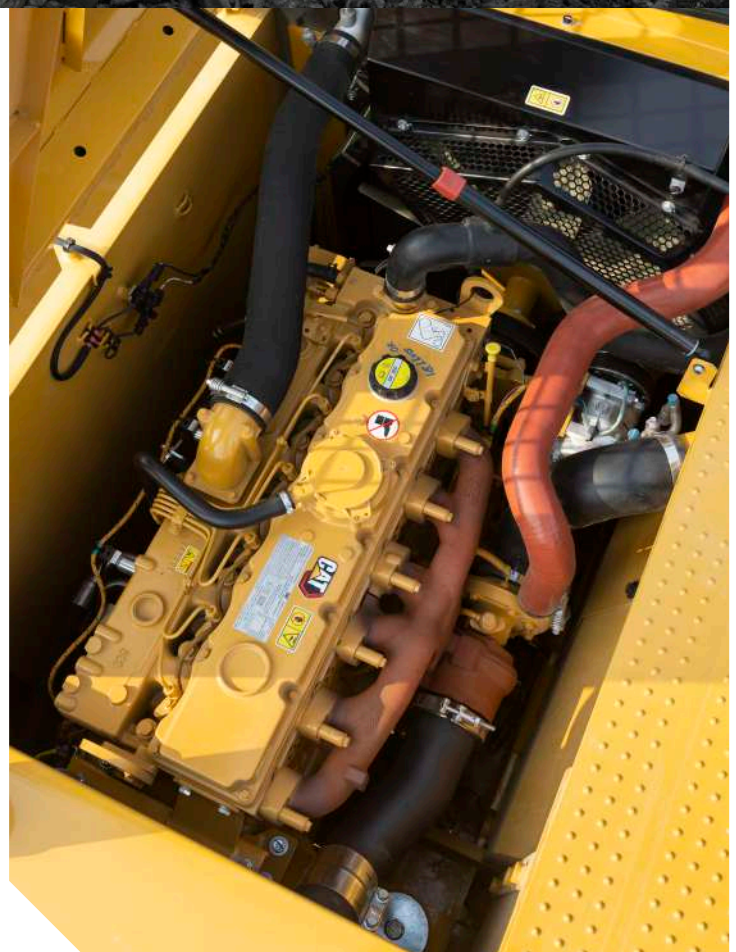
HIGH PERFORMANCE POWER FOR YOUR HIGH-PRODUCTION APPLICATION

HIGH PERFORMANCE POWER

The Cat 324 brings strength and efficiency together. Its turbocharged Cat C7.1 engine delivers high power density with proven fuel and air systems, while advanced electrohydraulics give you smooth, precise control in every pass.

EFFICIENCY THAT PAYS OFF

Eco mode cuts fuel use without sacrificing digging or lifting power, and automatic engine speed control reduces idle burn during lighter loads. With regeneration circuits and efficient pump design, the 324 helps you move more material while keeping fuel costs low.





ENGINEERED FOR ENDURANCE

A rugged X-shaped carbody and heavy-duty base frame dissipate stress and add strength, while a long undercarriage improves stability. With cooling systems built for extreme heat and cold start capability down to -10°C (14°F), the 324 is ready to take on any environment – and keep producing.

BUILT FOR LONG-TERM PRODUCTION

From earthmoving to quarry work, the Cat 324 thrives in the world's toughest conditions. Match your work with a choice of 1.3 m^3 Severe-Duty bucket or 1.4 m^3 General-Duty bucket. Reinforced structures, and a heavy-duty boom and stick ensure performance shift after shift.



RELIABILITY YOU CAN COUNT ON

PROVEN STRENGTH. BUILT TO LAST.

Built on Caterpillar's legacy of durability, the 324 incorporates advanced materials, precise welding, and protective designs to extend component life and ensure dependable operation in every terrain.

TESTED TOUGH

Robotically welded booms and sticks ensure long-term integrity, while protected hydraulic lines and sealed undercarriage rollers guard against wear and damage.

PROTECTED SYSTEMS

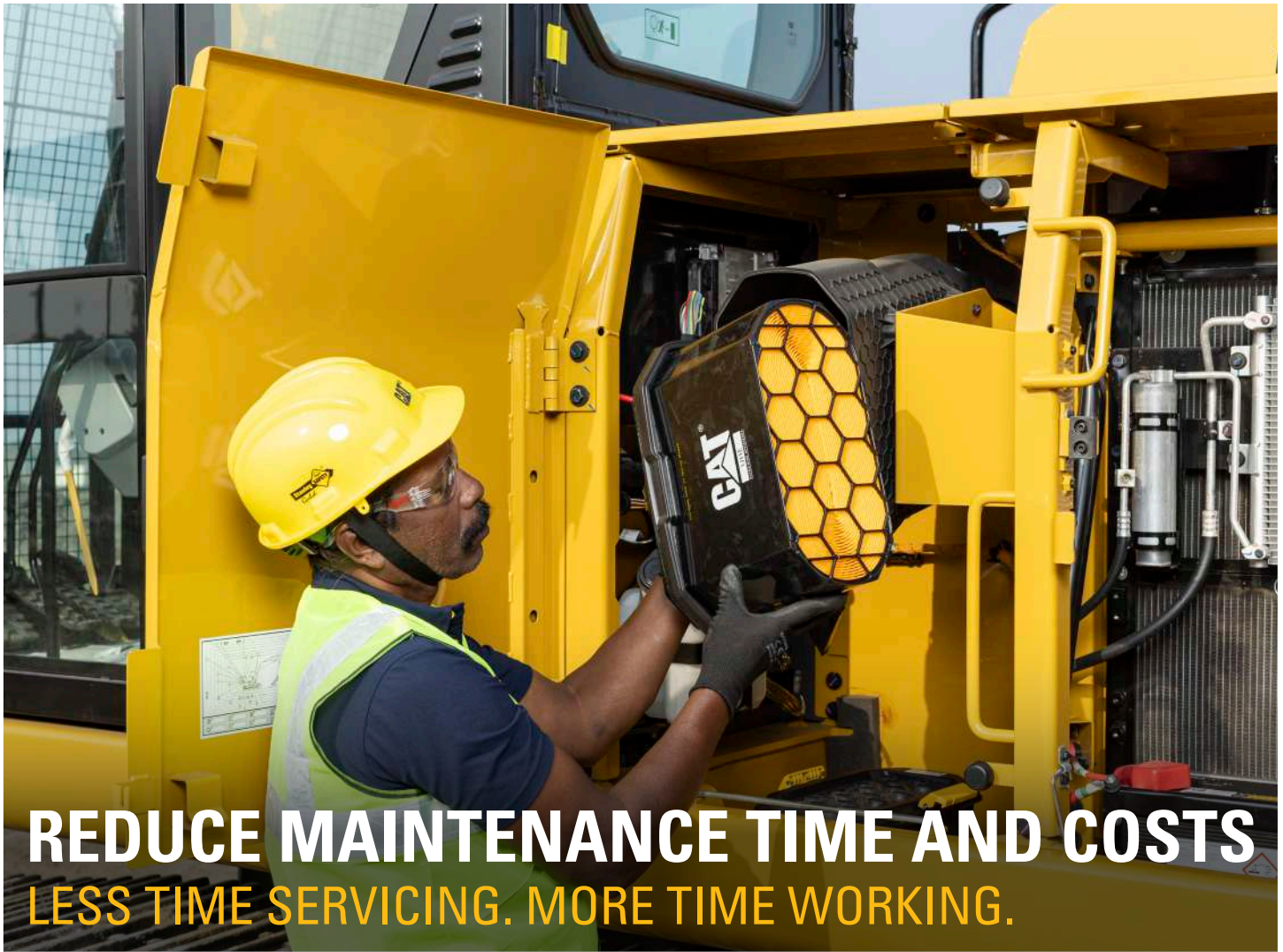
From durable wiring harnesses to robust bottom guards, every component is designed for reliability in rough terrain.

DEPENDABLE DURABILITY

A heavy-duty counterweight and reinforced frame keep the machine stable during heavy lifting.

PROVEN POWER

The Cat C7.1 engine delivers cleaner, quieter operation while maintaining the torque you need for demanding work.



REDUCE MAINTENANCE TIME AND COSTS

LESS TIME SERVICING. MORE TIME WORKING.

Maintenance on the Cat 324 is fast, safe, and clean thanks to thoughtful design details throughout the machine.

EASY ACCESS

Ground-level S-O-SSM ports make fluid sampling quick and convenient, while grouped filters and an electric priming pump help reduce contamination risk. Anti-skid platforms with textured grip surfaces provide secure footing, ensuring confident, stable access during every service routine.

LONG-LIFE COMPONENTS

An advanced hydraulic oil filter design extends component life, while two-stage fuel filtration and anti-rust tank coatings protect against low-quality fuel.

ECONOMICAL OWNERSHIP

Longer intervals, like 500-hour oil changes, and maintenance-free batteries keep your schedule on track.

MORE UPTIME

Add in high-efficiency air filtration and a durable pre-cleaner for dusty environments, and you have a machine built for uptime.



DESIGNED FOR OPERATORS SIMPLE TO START. EASY TO MASTER.

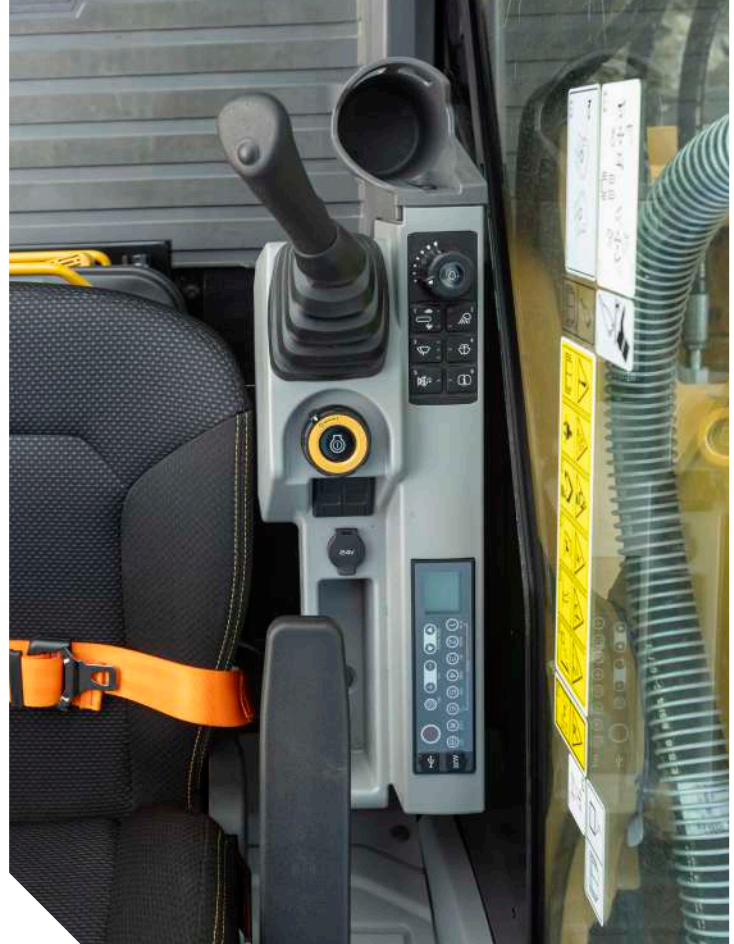
Every feature of the Cat 324 is designed around you, the operator. Intuitive systems, customizable settings, and smart automation help reduce fatigue while improving accuracy throughout the day.

OPERATOR-FRIENDLY FEATURES

Start the machine with a push of a button, navigate easily on the high-resolution 8-inch touchscreen, and operate with low-effort joysticks that respond precisely to your movements.

PERSONALIZED EXPERIENCE

Save your preferred joystick patterns, fine-tune bucket control through the electrohydraulic system, and rely on Auto Hammer Stop to prevent tool wear and overheating, so you can focus on the work, not the worry.





ENJOY SHIFT-LONG COMFORT.
COMFORT THAT KEEPS YOU GOING.



The 324's cab is designed around operator comfort, keeping you focused, alert, and productive all day long. Inside the cab, everything is designed for long days and lasting focus.

QUIET AND COMFORTABLE

The ergonomic seat offers multiple suspension levels, while viscous mounts and tight seals minimize vibration and noise.

STAY COOL, STAY CONNECTED

Automatic climate control keeps the air flowing evenly through five outlets, and Bluetooth®, USB ports, and intuitive radio controls add convenience throughout your shift.

CONVENIENT STORAGE

Bright seatbelts and wide entries enhance safety, while smart storage spaces, front holders for large cups and phones, rear compartments for lunchboxes and gear, make it easy to stay organized.



SAFETY YOU CAN COUNT ON

TO ARRIVE HOME SAFELY EVERY DAY

OPERATOR AWARENESS

The Cat 324 puts operator safety first. A cab with excellent visibility, standard mirrors, and optional camera keeps you aware of your surroundings.

SECURE STEPS AND REDUCE SLIPS

Serrated steps, anti-skid plating, and ISO 2867:2011 compliant handrails help you climb in and out securely, while bright seatbelts and wide entries help make every shift safe.

ALL-AROUND PROTECTION

Optional guards, alarms, and reinforced structures add extra layers of protection. Paired with LED lighting for round-the-clock jobs, this machine is designed to help every operator go home safe at the end of the day.

1,000 WAYS TO STAY SAFE.

FACT:

SLIPPING IS ONE OF THE **BIGGEST CONTRIBUTORS** TO WORKPLACE INJURIES.*



OUR ANTI-SKID PLATES FEATURE

1,000+ INDIVIDUAL PERFORATIONS FOR BETTER TRACTION

*SOURCE: [HTTPS://WWW.OSHA.GOV/DTE/GRANT_MATERIALS/FY07/SH-16625-07/SLIPSTRIPSFALLS.PPT](https://www.osha.gov/dte/grant_materials/fy07/sh-16625-07/slipstripsfalls.ppt)

INCREASE YOUR PRODUCTIVITY AND PROFIT WITH CAT ATTACHMENTS

When your machine can do more, you can make more profit. Increase the versatility of your machine with any of the variety of Cat attachments. Each Cat attachment is designed to fit the weight and horsepower of Cat excavators for improved performance and stability.



BUCKETS



HYDRAULIC HAMMERS



MORE THAN A MACHINE

BUILT AROUND YOUR SUCCESS



When you buy Cat equipment, you get so much more than the machine. You also get the support of a world-class dealer network, backed by a range of flexible solutions, technology, tools, and more.

TESTED TOUGH

A Customer Value Agreement (CVA) from your Cat dealer helps you do more and worry less. A CVA simplifies machine ownership and maintenance, adds the security of expert dealer support and gives you peace of mind from effective equipment health management.

PROTECTED SYSTEMS

A broad range of repair options give you choices that work with your needs, budget, and timeline. Every repair is performed by expert Cat technicians. You'll receive smart repair advice, a timely, accurate quote, and service that gets your machine back into action quickly.

DEPENDABLE DURABILITY

Genuine Cat Parts deliver the highest level of reliability and productivity. Order direct from your Cat dealer or shop online at parts.cat.com.

PROVEN POWER

Count on Cat Financial to provide the best finance and extended protection solutions for your business. For more than 30 years, we have helped our customers succeed through financial service excellence. Services to help you save time, save money, and get back on the job.

VISIONLINK™

TAKES THE GUESSWORK OUT OF MANAGING YOUR EQUIPMENT



VisionLink takes the guesswork out of managing your entire fleet – regardless of size or equipment manufacturer.* Review equipment data from your desktop or mobile device to maximize uptime and optimize assets. With interactive dashboards, VisionLink makes it easier for operations of all sizes to make informed decisions that lower costs, simplify maintenance, and improve security on your jobsite. With different subscription-level options, your Cat dealer can help you determine what you need to connect your fleet and manage your business.

*Data field availability can vary by equipment manufacturer.

TECHNICAL SPECIFICATIONS

See cat.com for complete specifications.

| ENGINE | | |
|---|--------------------------|---------------------|
| Engine Model | Cat® C7.1 | |
| Net Power – ISO 9249 | 108 kW | 145 hp |
| Net Power – ISO 9249 (DIN) | 147 hp (metric) | |
| Engine Power – ISO 14396 | 112 kW | 150 hp |
| Engine Power – ISO 14396 (DIN) | 152 hp (metric) | |
| Bore | 105 mm | 4 in |
| Stroke | 135 mm | 5 in |
| Displacement | 7.1 L | 433 in ³ |
| Biodiesel Capability | Up to B20 ⁽¹⁾ | |
| <ul style="list-style-type: none"> • The 324 meets UN ECE R96 Stage II emission standards, equivalent to U.S. EPA Tier 2 and EU Stage II. • Recommended for use up to 4000 m (13,120 ft) altitude with engine power derate above 3000 m (9,840 ft). • Advertised power is tested per the specified standard in effect at the time of manufacture. • Net power advertised is the power available at the flywheel when the engine is equipped with fan, air intake system, exhaust system and alternator. • Engine speed at 1,700 rpm. | | |
| ⁽¹⁾ Cat engines are compatible with diesel fuel blended with the following lower-carbon intensity fuels** up to: <ul style="list-style-type: none"> ✓ 100% biodiesel FAME (fatty acid methyl ester)* ✓ 100% renewable diesel, HVO (hydrogenated vegetable oil) and GTL (gas-to-liquid) fuels | | |
| Refer to guidelines for successful application. Please consult your Cat dealer or “Caterpillar Machine Fluids Recommendations” (SEBU6250) for details. *For use of blends higher than 20% biodiesel, consult your Cat dealer. **Tailpipe greenhouse gas emissions from lower-carbon intensity fuels are essentially the same as traditional fuels. | | |
| HYDRAULIC SYSTEM | | |
| Main System – Maximum Flow – Implement | 416 L/min | 106 gal/min |
| Maximum Pressure – Equipment – Implement | 35 000 kPa | 5,075 psi |
| Maximum Pressure – Travel | 35 000 kPa | 5,075 psi |
| Maximum Pressure – Swing | 25 000 kPa | 3,625 psi |
| SWING MECHANISM | | |
| Swing Speed | 11.5 rpm | |
| Maximum Swing Torque | 61 kN·m | 45,260 lbf·ft |
| MACHINE WEIGHTS | | |
| Operating Weight | 22 700 kg | 50,100 lb |
| 4.45 m (14'7") Long undercarriage, Heavy Duty (HD) Reach boom, HD R2.5 (8'2") stick, 1.3 m ³ (1.7 yd ³) Severe Duty (SD) bucket, 600 mm (24") triple grouser shoes and 4550 kg (10,030 lb) counterweight. | | |

| SERVICE REFILL CAPACITIES | | |
|-----------------------------------|-------|----------|
| Fuel Tank | 370 L | 97.7 gal |
| Cooling System | 28 L | 7.4 gal |
| Engine Oil (with filter) | 18 L | 4.8 gal |
| Swing Drive | 6 L | 1.6 gal |
| Final Drive (each) | 5 L | 1.3 gal |
| Hydraulic System (including tank) | 218 L | 57.6 gal |
| Hydraulic Tank | 115 L | 30.4 gal |

| DIMENSIONS | | |
|---|---|---------|
| Boom | HD Reach 5.7 m (18'8") | |
| Stick | HD Reach 2.5 m (8'2") | |
| Bucket | SD 1.3 m³ (1.70 yd³) | |
| Undercarriage | Long 4.45 m (14'7") | |
| Shipping Height – Top of Cab | 3360 mm | 11.0 ft |
| Handrail Height | 3020 mm | 9.9 ft |
| Machine Length (with boom, stick, bucket installed) | 9520 mm | 31.2 ft |
| Tail Swing Radius | 2830 mm | 9.3 ft |
| Counterweight Clearance (without shoe lug height) | 1020 mm | 3.3 ft |
| Ground Clearance (without shoe lug height) | 440 mm | 1.4 ft |
| Track Length | 4450 mm | 14.6 ft |
| Track Length – Length to Center of Rollers | 3650 mm | 11.9 ft |
| Track Gauge – Undercarriage | 2380 mm | 7.8 ft |
| Transport Width – 600 mm (24") shoes | 2980 mm | 9.8 ft |

| WORKING RANGES AND FORCES | | |
|---|---|------------|
| Boom | HD Reach 5.7 m (18'8") | |
| Stick | HD Reach 2.5 m (8'2") | |
| Bucket | SD 1.3 m³ (1.70 yd³) | |
| Undercarriage | Long 4.45 m (14'7") | |
| Maximum Digging Depth | 6310 mm | 20.7 ft |
| Maximum Reach at Ground Level | 9470 mm | 31.1 ft |
| Maximum Cutting Height | 9330 mm | 30.6 ft |
| Maximum Loading Height | 6280 mm | 20.6 ft |
| Minimum Loading Height | 2590 mm | 8.5 ft |
| Maximum Depth Cut for 2440 mm (8 ft) Level Bottom | 6120 mm | 20.1 ft |
| Maximum Vertical Wall Digging Depth | 5620 mm | 18.4 ft |
| Bucket Digging Force (ISO) | 139 kN | 31,250 lbf |
| Stick Digging Force (ISO) | 109 kN | 24,500 lbf |

STANDARD AND OPTIONAL EQUIPMENT

Standard and optional equipment may vary. Consult your Cat® dealer for details.

| ENGINE | STANDARD | OPTIONAL | BOOM, STICKS, AND LINKAGE | STANDARD | OPTIONAL |
|---|-----------------|-----------------|---|-----------------|-----------------|
| Cat® C7.1 single turbo diesel engine | • | | 5.7 m (18'8") HD Reach boom | • | |
| Three selectable modes: Power, Smart, Eco | • | | 2.5 m (8'2") HD Reach stick | • | |
| One touch low idle with auto engine speed control (AEC) | • | | Bucket linkage, B1 family with lifting eye | • | |
| Two stage fuel filtration system with water separator and indicator | • | | ELECTRICAL SYSTEM | STANDARD | OPTIONAL |
| 4000 m (13,120 ft) altitude capability with derate from 3000 m (9,840 ft) | • | | Two 750 CCA maintenance free batteries | • | |
| Up to 52° C (126° F) high-ambient cooling capacity with derate above 48° C (118° F) | • | | Centralized electrical disconnect switch | • | |
| Down to -10° C (14° F) cold start capability | • | | LED chassis and cab lights | • | |
| 75 Amp alternator | • | | LED left-side boom light | • | |
| Radial sealed double element air filter | • | | LED right-side boom light | | • |
| Electric fuel priming pump | • | | CAT TECHNOLOGY | STANDARD | OPTIONAL |
| HYDRAULIC SYSTEM | STANDARD | OPTIONAL | VisionLink™ | • ¹ | |
| Electronic main control valve | • | | SERVICE AND MAINTENANCE | STANDARD | OPTIONAL |
| Boom and stick regeneration circuits | • | | Grouped engine oil, fuel, and hydraulic oil filters | • | |
| Automatic hydraulic warm-up | • | | S-O-S SM ports | • | |
| Automatic two-speed travel | • | | Radiator screen for radiator/oil cooler to prevent plugging by debris | • | |
| High performance hydraulic return filter | • | | SAFETY AND SECURITY | STANDARD | OPTIONAL |
| Hydraulic auxiliary lines (hammer) | | • | Rearview mirrors; handrail mounted (one), cab handhold mounted (one) | • | |
| CAB | STANDARD | OPTIONAL | Bolt free service platform with anti-skid plate | • | |
| Sound suppressed cab with viscous mounts | • | | Neutral lever (lock out) for all controls | • | |
| Rollover Protective Structure (ROPS) | | • | Ground-level accessible secondary engine shutoff switch in cab | • | |
| Operator Protective Guards (OPG) | | • | Handrail and handhold | • | |
| Front windshield guard (wire mesh) | | • | Signaling/warning horn | • | |
| Mechanical-suspension seat with headrest and armrest angle adjustment | • | | Rearview camera | | • |
| High-resolution 203 mm (8") LCD touchscreen monitor | • | | Travel alarm | | • |
| Keyless push to start engine control | • | | | | |
| AM/FM Bluetooth® radio with USB/Auxiliary ports | • | | | | |
| Cup holder and storage compartments | • | | | | |
| Upper radial wiper with washer | • | | | | |
| Openable steel hatch | • | | | | |
| Washable floor mat | • | | | | |
| 51 mm (2") orange seat belt | • | | | | |
| UNDERCARRIAGE AND STRUCTURES | STANDARD | OPTIONAL | | | |
| 4.45 m (14'7") Long undercarriage | • | | | | |
| Grease lubricated track link | • | | | | |
| Segmented track guiding guard | • | | | | |
| Full length track guiding guard | • | | | | |
| Bottom guard | • | | | | |
| 4550 kg (10,030 lb) counterweight | • | | | | |
| 600 mm (24") triple grouser track shoes | | • | | | |
| 790 mm (31") triple grouser track shoes | | • | | | |

¹ Provides core telematics data to manage health, maintenance insights, and condition monitoring. Other plans available for more comprehensive data reporting. Consult your Cat dealer for details.

For more complete information on Cat products, dealer services and industry solutions, visit us on the web at www.cat.com.

Materials and specifications are subject to change without notice. Featured machines in photos may include additional equipment. See your Cat dealer for available options.

© 2025 Caterpillar. All Rights Reserved. CAT, CATERPILLAR, LET'S DO THE WORK, VisionLink, their respective logos, "Caterpillar Corporate Yellow," the "Power Edge" and Cat "Modern Hex" trade dress as well as corporate and product identity used herein, are trademarks of Caterpillar and may not be used without permission.

www.cat.com www.caterpillar.com

AEXQ4491-00 (11-2025)
Build Number: 05A
(India)

