

**GAINWELL**

**CAT**

**END-TO-END SOLUTIONS.  
ONE TRUSTED PARTNER.**



**CAT PRODUCT RANGE:**

**BACKHOE LOADER | WHEEL LOADER | HYDRAULIC EXCAVATOR | MOTOR GRADER | DOZER**



## About Gainwell Commosales Private Limited

Gainwell Commosales Private Limited (formerly Tractors India Private Limited) has been a Caterpillar dealer in India for over eight decades, operating across East & North India, Bhutan, and Nepal through its wholly owned subsidiary, Tractors Nepal Private Limited.

Committed to advancing infrastructure and socio-economic progress, Gainwell delivers advanced Caterpillar solutions across Construction, Mining, Power & Energy segments, backed by a strong service network offering end-to-end customer support nationwide.

An ISO 9001:2015 certified company, Gainwell has been recognised as a Great Place to Work for eight consecutive years, ranking #49 among India's Top 50 Companies to Work For.

-  **Wide Range of Cat® Products & Solutions**
-  **19 Branch Offices**
-  **21 Area Offices**
-  **38 Retail Outlets**
-  **27 MARC Projects**
-  **3 State-of-the-Art Workshops**
-  **2 World Class Rebuild Centers**
-  **LEED Platinum 4 Certified Facility at NCR**
-  **22500+ Active Machine Population**
-  **13500+ Active Engine Population**
-  **2200+ Dedicated Sales & Service Personnel**

 EVERY MINUTE MATTERS

Cat® Customer Value Agreements |  Services Commitment

**GETTING YOU BACK TO WORK**

**NEXT-DAY PARTS.<sup>^#</sup>  
TWO-DAY REPAIR.\*  
OR WE PAY\*\***



**ASSURED SERVICE PROGRAM**

**CUSTOMER VALUE AGREEMENT**  
( Including Schedule Oil Sampling, Parts and Service Completion Commitment )

^#T&C Apply. \*Parts and repair services only in select geographical regions. \*\*Applies to certain repairs. Service of all the long list of the model by the end of the second business day from initial contact at the location or prior to the day specified by the customer. Oil sampling service available for select parts and repairs at the location by a later working date specified by the customer.

 EVERY DROP COUNTS

**YOUR FUEL. YOUR SAVINGS.  
OUR GUARANTEE.**



**FUEL GUARANTEE PROGRAM  
FOR CAT® 321 & 322 EXCAVATORS**



**321**

STAYS WITHIN  
**10-12 LTR/HR**



**322**

STAYS WITHIN  
**12-14 LTR/HR**

^#Parts and repair services only in select geographical regions. \*\*Applies to certain repairs. Service of all the long list of the model by the end of the second business day from initial contact at the location or prior to the day specified by the customer. Oil sampling service available for select parts and repairs at the location by a later working date specified by the customer. \*T&C Apply. Applies only when all applicable Service Commitment terms and conditions are met and the committed service providers are not scheduled under multiple commitments.

\*T&Cs apply. Please contact your local GCPL branch for further details.

## Rental - The right solution

No more idle time! No more idle capacity! No more maintenance hassle! Now, you can focus on your core competencies, manage cost & the inherent risks of business. Rental is an alternative that helps you in more ways than one. The Cat Rental Store offers superior rental solutions for a wide range of products at attractive rental rates with trained operators. We offer competitive rental rates & every piece of equipment is rigorously maintained & checked before it goes out to the job site.



**Backhoe Loader**



**Wheel Loader**



**Excavator**



**Motor Grader**



**Dozer**

## Cat<sup>®</sup> Certified Used Equipment

Living up to a higher standard

Cat<sup>®</sup> Certified Used machines are fully inspected & serviced as per stringent Caterpillar standards, refurbished with genuine Cat parts & comes with a warranty. What's more, Cat Certified Used machines are affordable, coupled with unmatched service & product support from Gainwell, your Cat dealer. Now, that is what you call complete peace of mind.



**Cat<sup>®</sup> Excavator**



**Cat<sup>®</sup> Motor Grader**

# NEXT GENERATION CAT® HYDRAULIC EXCAVATORS

Powered by the reliable Cat® engine, Cat hydraulic excavators deliver high torque & fast cycle times for maximum productivity.



Cat® 321

Cat® 322

Cat® 324

## Technical Specifications

Model	Cat® 321	Cat® 322	Cat® 324
Engine	Cat® C3.6	Cat® C3.6	Cat® C7.1
Engine Power	136 hp	136 hp	152 hp
Engine Modes	Eco, Smart, Power		
Operating Weight (in Kg)*	19 700 Kg	20 900 Kg	22 700 Kg
Fuel Guarantee	As low as 11 ltr/hr*, Lowest in 20 Ton Class	As low as 13 ltr/hr*	
Electro-Hydraulics	Yes		
Boom	R5.7 m	HD R5.7m	HD R5.7 m
Stick	R2.25 m	HD R2.5 m	HD R2.5 m
Bucket	GD 1.0 m <sup>3</sup>	SD 1.1 m <sup>3</sup> / GD 1.2 m <sup>3</sup>	SD 1.3 m <sup>3</sup> / GD 1.4 m <sup>3</sup>
Undercarriage	STD UC - 4.1 m / Medium UC - 4.25 m, Track 600 mm TG	Medium UC - 4.25 m / Long UC - 4.45 m Track 600 mm TG	Long UC - 4.45 m, Track 600 mm TG
Swing Speed	10 rpm	11.5 rpm	11.5 rpm
Swing Torque	61 kN-m	69 kN-m	61 kN-m
Bucket Digging Force	135 kN	128 kN	139 kN
Stick Digging Force	119 kN	109 kN	109 kN
Bolt Free Service Platform with Anti Skid Plate		Yes	
Next Gen AC Cabin		Yes	
Product Link		Yes	
Track Rollers	7	7/8	8

\* T&C Applied

# CAT® MOTOR GRADER & DOZER

## Cat® Motor Grader

- Faster, easier, safer & more accurate every time
- Factory integrated & optimized for maximum precision
- Digital dash technology simplifies operation
- Requires fewer people on the ground for greater safety



Cat® 120GC



Cat® 120NG

## Technical Specifications

Model	Cat® 120NG	Cat® 120GC
Engine Model	Cat® C7.1	Cat® C4.4
Engine Power (VHP)	104-123 kW / 140-164 hp	128 kW
Bore	105 mm 4.1 in	105 mm
Operating Weight	16 271 kg	16100 kg
Blade Width	3.7 m	3.7 m
Maximum Lift Above Ground	410 mm	410 mm

**FUEL EFFICIENT  
WITH LOWER  
MAINTENANCE  
COST**

## Cat® Dozer

- High Performance Engine
- Greater Operating Efficiency
- Superior Operator Comfort
- Lower Maintenance Cost



## Technical Specifications

Model	Cat® D6R2 XL
Engine	Cat® C9
Operating Weight	18984 kg
Net Power	148 kW
Bore	112 mm
Ground Pressure (ISO 16754) - A - Blade	60.9 kPa

**WORLD-CLASS  
PERFORMANCE AND  
LONG TERM VALUE**

# SEM MOTOR GRADER & DOZER

## SEM Motor Grader

- **150–168 HP Variable Engine** – Powerful & fuel-efficient
- **CAT Tandem Axle** – Grease-free, oil-bath design for low maintenance
- **Load-Sensing Hydraulics** – Smooth, precise blade control
- **CAT PPPC Valve** – Optimized flow for superior grader performance
- **Low Oil, Long Life** – 55 L hydraulic oil with 2000-hour change interval
- **CAT Classic Controls** – Simple operation, higher productivity
- **High Circle Drive Torque** – Best-in-class blading & spreading capacity



## Technical Specifications

Model	SEM 917F Motor Grader
Engine Model	SC7H170G5E
Rated Power	112 - 125kW /150 - 168 Variable HP
Transmission	Countershaft powershift
Operating Weight	13,160 kg
Blade Width	3,669 mm / 12' Standard (10 ft optional)
Drawbar Pull	76 KN

**POWERFUL  
PERFORMANCE.  
PROVEN RELIABILITY.  
SIMPLE OPERATION.**

## SEM 818F Dozer

- **3rd-Gen Hydrostatic Dozer** – 30% higher efficiency, fuel-efficient performance
- **Superior Manoeuvrability** – Counter-rotation & infinite speed control reduce idle time
- **Easy, Comfortable Operation** – Joystick & pilot controls minimize operator fatigue
- **High Reliability** – Built with world-class components for maximum uptime
- **Low-Cost Serviceability** – Simplified design with maintenance-free undercarriage
- **Enhanced Safety** – 3-point access, fuel lock & multi-level alarms



## Technical Specifications

Model	SEM 818F Dozer
Engine Model	Weichai WD10G190E214
Rated Power	140 kW / 188HP
Operating Weight	16,950 kg
Bucket Capacity	4.3 m <sup>3</sup> SU
Speed	0 - 10 km/h with auto recall button
Cabin	Standard AC cabin, optional ROPS/FOPS
Track	510 mm

**BUILT FOR EFFICIENCY,  
DESIGNED FOR  
SERVICEABILITY,  
TRUSTED FOR  
RELIABILITY.**

# CAT® BACKHOE LOADER & HAMMER

## Cat® Backhoe Loader

- **High-Torque CAT 3.6 BSV Engine** – Reliable power & long-term productivity.
- **Precision Hydraulics** – Variable displacement pump with high flow for faster, cleaner work.
- **Fast, Powerful Design** – Parallel lift loader & excavator-style hoe boom.
- **Low Cost, High ROI** – Higher output per hour & per litre, easy maintenance, long life.
- **Operator Comfort** – Ergonomic cabin with optional HVAC for higher daily output.
- **Simple Operation** – Eco & Standard modes for better fuel efficiency.
- **Tough & Durable** – High operating weight (7980 / 8045 kg), ROPS/FOPS compliant.



## Technical Specifications

Model	Cat® 424 - 2 WD	Cat® 424 - 4 WD
Engine Regulation	BS-V	BS-V
Power Gross	55 kW (75 hp)	55 kW (75 hp)
Peak Torque	424 Nm	424 Nm
Hydraulic Flow @ 2200 rpm	132 L/min	132 L/min
Hydraulic Pump Type	Variable Displacement Pump	Variable Displacement Pump
System Pressure	245 bar (Backhoe & Loader)	245 bar (Backhoe & Loader)
Power Steering	Hydrostatic	Hydrostatic
Bucket Capacity (Loader/ Hoe)	1.05 m <sup>3</sup> / 0.30 m <sup>3</sup>	1 m <sup>3</sup> / 0.30 m <sup>3</sup>
Hydraulic System/ Hydraulic Tank Refill	106 Lit/ 42 Litre	106 Lit/ 42 Litre

Used across a wide range of construction & light demolition applications



Cat® B8 Hammer



# HINDUSTAN WHEEL LOADER & SEM WHEEL LOADER

## Hindustan Wheel Loader

- **98 kW BS V Turbo Engine** – Powerful & reliable performance.
- **Fuel-Efficient Powertrain** – Optimized drivetrain with common rail injection.
- **High-Performance Hydraulics** – Fast cycle times for quicker loading.
- **Best Lift Height** – Higher productivity per cycle.
- **Low Maintenance, High Uptime** – Durable design with extended service intervals.
- **Comfort & Safety** – Ergonomic, ROPS/FOPS-certified operator cabin.



## Technical Specifications

Model	Hindustan 2021F Wheel Loader
Engine Model*	ASHOK LEYLAND, H6C413323
Rated Power (gross)	98 kW (133hp) @ 2300 RPM
Bucket Capacity	1.53 - 3.0 m <sup>3</sup>
Payload	3,210 kg
Operating Weight	11,637 kg
Emission Compliant	BS-V

\*Engine meets BHARAT STAGE V (CEV) emission standards

**BESTSELLER**  
**GOT CLEANER**

## SEM Wheel Loader

- **Burn Less Fuel, More Productivity** – Weichai 228 HP fuel-efficient engine (Pune, India).
- **CAT Countershaft Transmission** – High reliability with easier, cost-effective repairs.
- **Heavy-Duty CAT Axles** – Best-in-class performance for demanding applications.
- **Advanced Load-Sensing Hydraulics** – High efficiency with best-in-class 9.3-sec cycle time.
- **CAT Modular Cooling System** – Efficient cooling for engine, transmission & hydraulics.
- **Performance Series Buckets** – 110% fill factor for higher output.
- **High Production Capacity** – 450–650 m<sup>3</sup>/hour (application dependent).



## Technical Specifications

Model	SEM 656D Wheel Loader
Engine Model	Weichai WP8G231E670
Rated Power / kW/HP	170kW / 228 HP
Rated Load	5,500 kg
Bucket Capacity	2.6 - 5.0 m <sup>3</sup>
B-Pin Height	4,162 mm (Standard)
Hydraulic Cycle Time	9.3 sec

**THE PERFORMANCE**  
**YOU NEED,**  
**THE SUPPORT**  
**YOU EXPECT**

# CHOOSING THE RIGHT CAT® REBUILD OPTION

Maximize Value - Extend Productivity - Minimize Cost

## BEFORE



## AFTER



Your heavy equipment investment deserves proven solutions. Cat Dealers offer 4 rebuild pathways tailored to machine hours, condition, and budget—from targeted refresh to factory-certified excellence.

## Rebuild Options Overview

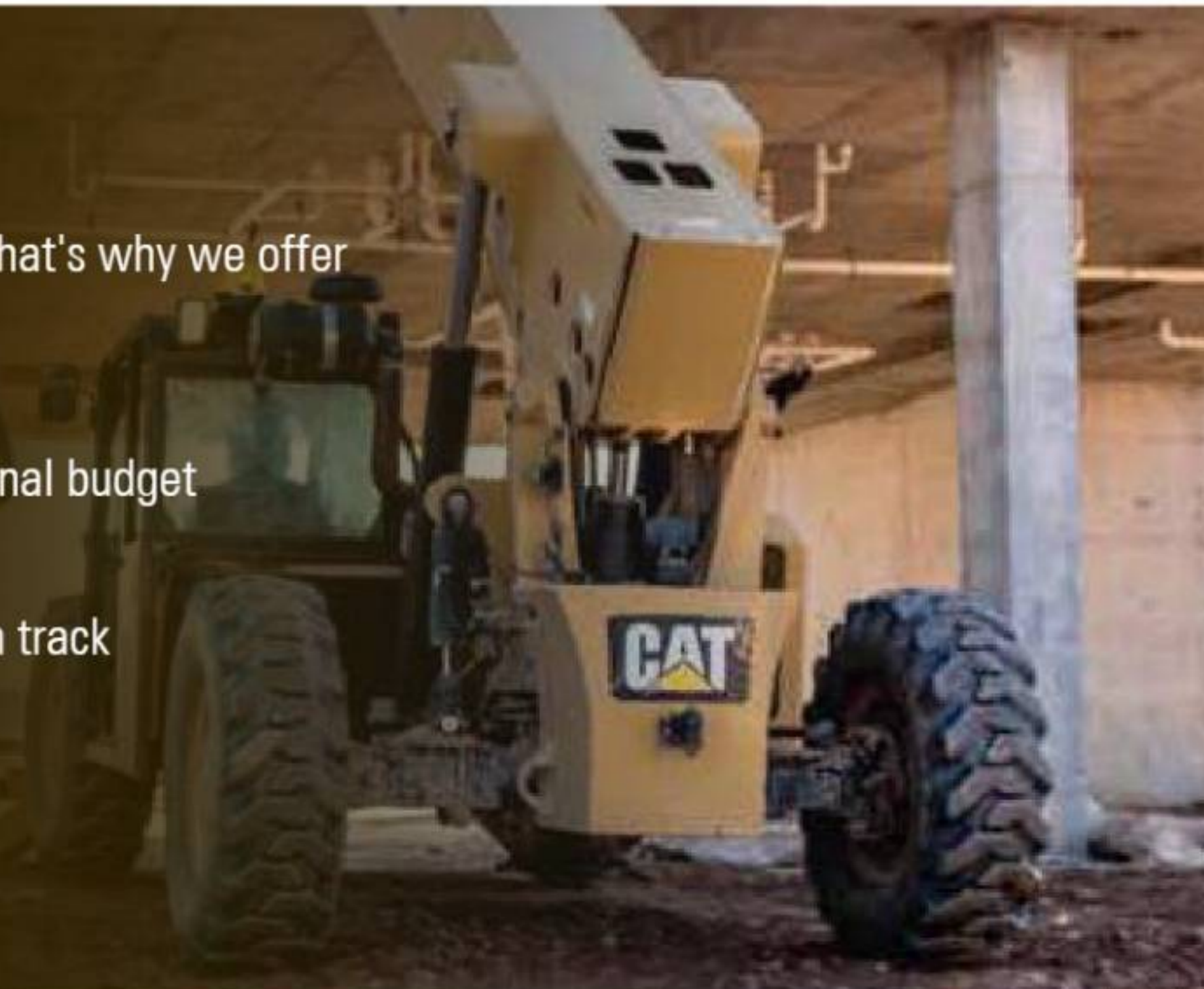
LEVEL	TYPE OF REBUILD	PACKAGE COST* % of current new machine	FINANCE OPTIONS	EPP OPTIONS
1	<b>COMPONENT REBUILD</b> Recommended SMU Machines of 8000+ hours	<25%	✓	✓
2	<b>POWERTRAIN REBUILD</b> Recommended SMU Machines of 10000-12000 hours	25%-35%	✓	✓
3	<b>FULL DEALER MACHINE REBUILD</b> Recommended SMU Machines of 12000+ hours	35%-50%	✓	✓
4	<b>CAT CERTIFIED MACHINE REBUILD</b> Recommended SMU Machines of 12000+ hours	50%-60%	✓	✓

\*Terms and conditions apply.

## FLEXIBLE FINANCING SOLUTIONS

We understand that equipment investments require careful financial planning. That's why we offer attractive, customized financing options to suit your business needs:

- **Competitive interest rates** tailored to your credit profile and rebuild tier
- **Flexible EMI structures** designed to align with your cash flow and operational budget
- **Extended repayment terms** to minimize immediate capital burden
- **Quick approval process** to keep your equipment uptime and productivity on track
- **No hidden charges** — transparent pricing and clear payment schedules
- **Special schemes** for bulk orders and long-term partnerships



## Vision Link

- Monitor equipment health to prevent downtime
- Track location, usage & performance in real time
- Manage equipment efficiently across projects



GET IT ON  
Google Play

Available on the  
App Store

## E-commerce

- Buy Cat genuine parts. ANYTIME. ANYWHERE
- Ease of ordering parts through Cat Central Mobile App
- Doorstep delivery & Store pick-up available



GET IT ON  
Google Play

Available on the  
App Store



## Gainwell Vanijya

- Create & track service request
- Check parts availability & price online
- Connect to customer support hassle free



GET IT ON  
Google Play

## Customer Loyalty Program

- Earn upto 2% reward points on Cat parts purchase
- Additional points for online parts purchase
- Redeem points in your next parts purchase

**SAMRIDDHI**  
CLUB



GET IT ON  
Google Play

OVER 80 YEARS OF BUILDING NATIONS  
BEYOND BOUNDARIES

GAINWELL

CAT



Scan To Know More

**GAINWELL COMMOSALES PRIVATE LIMITED**



[www.gainwellindia.com](http://www.gainwellindia.com)



[marketing@gainwellindia.com](mailto:marketing@gainwellindia.com)



1800 419 3356 |

