

## Main Specifications

### Main specifications

Standard Weight /kg	13,160
Overall Dimensions /mm	8,588*2,491*3,150
Travel Speed (Forward/Reverse) km/h	40/29
Max. Drawbar traction /kN	≥76
Frame Articulation Angle	20°
Min. Turning Radius /mm	7300
Tire	Standard 13-24 12PR, Optional 14-24 12PR/16PR

### Engine

Engine Manufacturer	SDEC
Engine Model	SC7H170G5E
Max. Torque /N.m@RPM	730 @ 1200~1500
Emission	CEV-V
Engine type	6 CYL, turbocharger , Electronically controller, VHP
Engineer displacement	7.15L
Net Power /kW@RPM	112/125 @ 2200

### Transmission

Brand/Manufacturer	Advance/HangChi
Type	Converter, Powershift
Forward/Reverse Gears	6 Forward/ 3 Reverse

### Rear Axle/Tandem

Brand/Manufacturer	SEM/Caterpillar
Differential	No-Spin
Service Brake	Air over oil, Disc

Oscillation Front Up	15°
Oscillation Front Down	25°

### Front Axle

Ground Clearance /mm	615
Wheel Lean, left/right	±18°
Max. Oscillation	±16°
Steering Range, left/right	±45°

### Standard Attachment

ROPS cabin	Rearview Camera
------------	-----------------

### Hydraulic System

Circuit Type	Load Sensing, PPPC
Pump Type	Variable Piston
Max. pump flow in L/min	162

### Moldboard

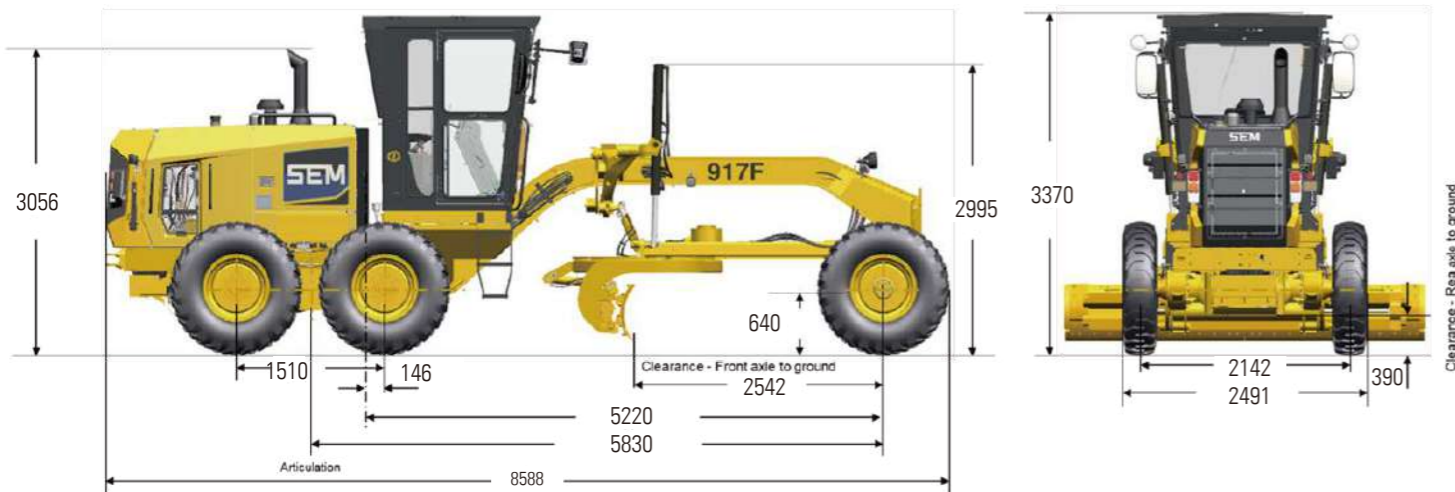
Blade Width, STD /mm	3,669
Blade Width, OPT /mm	3,972/3,059
Blade Height /mm	580
Blade Thickness /mm	20
Max. Lifting Height /mm	435
Max. Cut Depth /mm	750
Float Function	YES

### Service Refill Capacity

Fuel Tank /L	230
Engine Oil /L	17.5
Coolant /L	37
Transmission /L	17
Differential Case /L	27
Tandem Case, each side /L	50
Circle Drive, Non Slip Clutch /L	2
Circle Drive, With Slip Clutch /L	7
Hydraulic Oil Tank /L	55
DEF tank capacity	19L

### Main optional configurations

Mid mounted scarifier(MMS)	Fender
Frontal attachment blade/ 500/1000Kg CW	License light
Rear attachment Ripper/scarifier/400Kg CW	Beacon
E/H pin puller	Radio
Hydraulic blade tip	Cab cover
Circle drive with slip clutch	Toolbox
Cold start	Hand throttle
Level gauge	DCM grease tank



Caterpillar (Qingzhou) Ltd. Address: No. 12999 Nanhuan Road, Qingzhou City, Shandong Province, Zip Code: 262500, P.R.China

© 2025 Caterpillar (Qingzhou) Ltd. All Rights Reserved. 山工机械, SEM, SEM Logo, their respective logos, trade dress as well as corporate and product identity used herein, are trademarks of Caterpillar (Qingzhou) Ltd. and may not be used without permission.

Materials and specifications are subject to change without notice. Featured machines in photos may include optional equipment. Contact your SEM dealer for available options.

Version: April 2025 - India

SEM  
MOTOR GRADER

# SEM 917F

### Operate in comfort

- Caterpillar's classic lever control for ease of operation and precise implement movements
- Improved Operator seat and Rearview Camera to ensure better visibility and long hours of operations

### Performance you need

- Up to 2 times more circle drive torque than the industry standard for increased working efficiency.
- PPPC hydraulic system ensures precise, predicable and consistent operational movement regardless of engine speed.

### Low cost per hour

- VHP engine with optimized adaptability for workload and lower fuel consumption.
- Caterpillar (Qingzhou) in-house tandem axle, final drive units with four planetary gears, oil-bath lubrication, and maintenance-free and adjustment-free chain support a higher carrying capability.



Emission Compliance: CEV-V & CMVR phase-2

Engine Power (VHP) : 150 to 168HP

Blade width: 12 feet

Standard Operating Weight : 13.2T

www.semmachinery.com