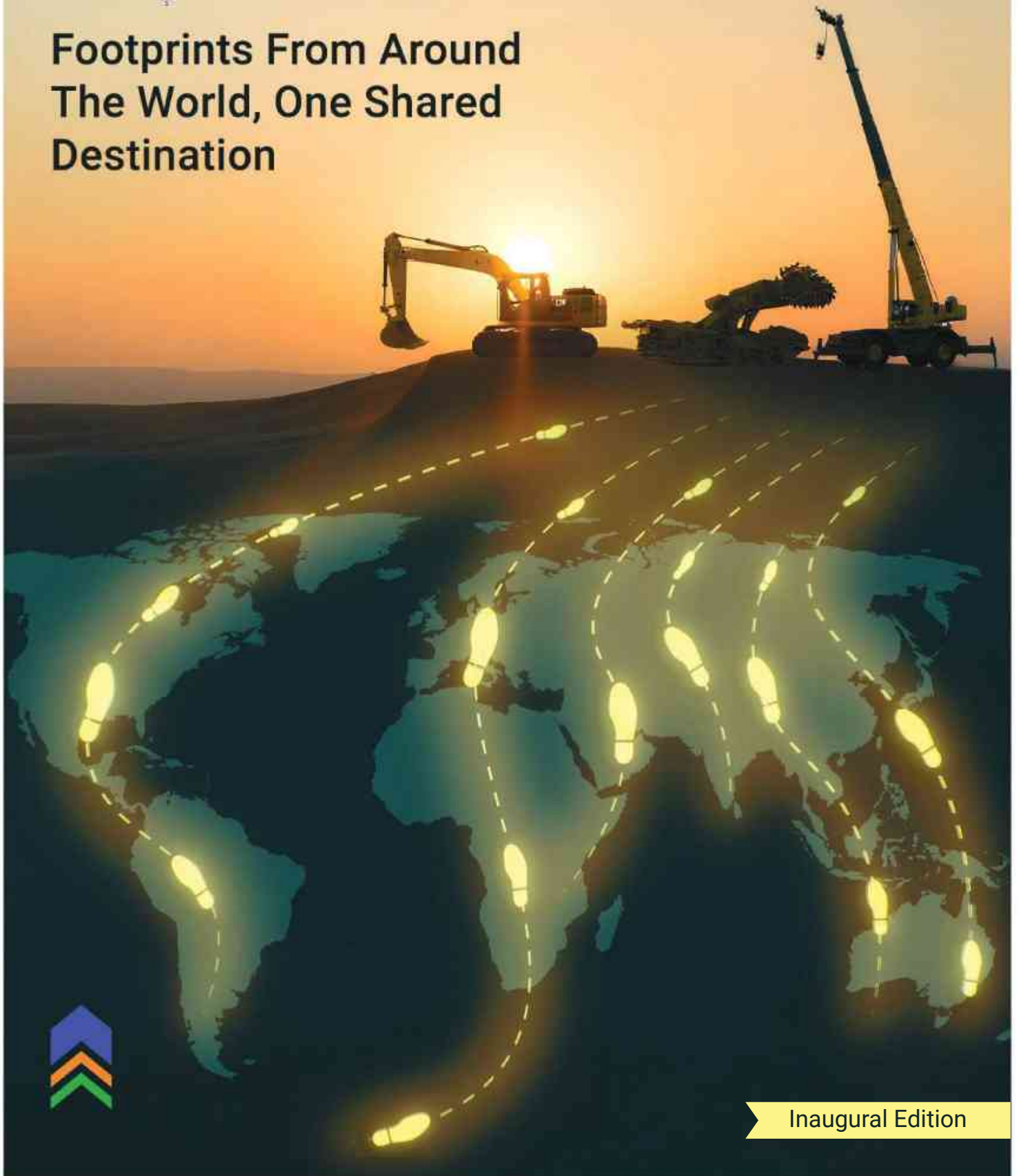




C MPASS

**Footprints From Around
The World, One Shared
Destination**







**Innovation
begins where
imagination
meets
purpose.**



Group Management Council

Meet the GMC members – core leadership driving Gainwell group strategy.



SUNIL KUMAR CHATURVEDI

CHAIRPERSON - GAINWELL GROUP



MEENA CHATURVEDI

VICE CHAIRPERSON - GAINWELL GROUP



MANAV KOHLI

EXECUTIVE DIRECTOR &
CHIEF EXECUTIVE OFFICER - GCPL



ALOK KUMAR TRIPATHI

WHOLE TIME DIRECTOR & PRESIDENT - TIL LTD



AYAN BANERJEE

WHOLE TIME DIRECTOR - TIL LTD



SUJOY BANERJEE

GROUP CHIEF PEOPLE OFFICER



DIPANKAR BANERJEE

WHOLE TIME DIRECTOR -
GAINWELL ENGINEERING PVT LTD



SAIKAT BARDHAN

GROUP HEAD - LEGAL, COMPLIANCE
& INTERNAL AUDIT



ANURAG SRIVASTAVA

MANAGING DIRECTOR - PARASEA
COAL MINE PROJECT PVT. LTD.



GAINWELL COMPASS:

GUIDED BY OUR VALUES. DRIVEN BY OUR MISSION.

Why GAINWELL COMPASS?

A compass is not just a tool; it is a promise. It points to true north when the horizon is unclear, helping travellers choose their path with confidence. In the same spirit, Gainwell Compass signals what our people, partners, and communities can expect from us: Direction, Clarity, and Purpose. This publication is a commitment—to navigate complexity together and to keep moving toward what matters most.

In a diverse and fast-moving organisation, teams often operate across multiple functions, geographies, and time zones. A well-curated magazine becomes the shared reference point that aligns everyone around strategy, safety, customer, and innovation. Just as a compass needle settles after a brief shake, our magazine turns chaos into signals, making priorities visible and relatable.

Gainwell Compass celebrates exploration. Progress demands curiosity. Our best ideas appear when engineers, operators, sales teams, and service experts learn from one another. By showcasing stories of experiments, field wins, and lessons from setbacks, the magazine encourages calculated risk-taking and continuous improvement. The compass metaphor reminds us that discovery requires both direction and movement.

It reinforces values. North, South, East, West—each direction symbolises pillars—how we work for our customers, with integrity, excellence, collaboration, and care. When you open this magazine, you will dive deeper into the coordinates guiding our decisions—whether it is a safety practice on-site, a design choice in the lab, or a promise to the customer in the market. The title becomes a mnemonic for culture.

Gainwell Compass connects people. In large enterprises, it is easy to feel distant from colleagues and leaders. This magazine closes that distance by showcasing our companies, products, people and our collective vision for the future. It will tell the human stories behind the scenes: apprentices finding mentors, veterans passing the craft knowledge, cross-border teams solving tough problems, communities thriving through responsible growth. A compass unites travellers on their journey; our magazine unites our teams across companies as one Group.

Markets shift, technologies evolve, and expectations rise. This magazine will map trends, spotlight emerging skills, and chart opportunities, so our teams, customers and partners can anticipate change and stay ahead of the curve. It will honour our heritage while orienting us toward the next horizon. This magazine captures what we pursue, how we win in the market, and how we win the right way. In every issue, readers can expect recurring sections mapped to these themes, so the magazine becomes both a chronicle and a playbook. It reminds us that wherever we operate—plants, ports, mines, offices—we share a direction and a destiny, measuring progress not only in numbers but in impact, craftsmanship, and trust every day.





At Gainwell, our journey has never just been about machines, markets, or milestones – it's been about people. About belief. About building something that lasts.

What began as a dream rooted in India's industrial growth has grown into a global force – An industrial powerhouse operating across sectors and geographies. But we didn't get here by chasing the scale alone. We got here by showing up – every day – with conviction, resilience, and a deep sense of purpose.

We know what got us here will not be enough to take us to our next milestone; that's why we have taken bold bets. We have weathered uncertainty. We have reinvented ourselves more than once. And through it all, it's our people – their courage, hard work, and quiet leadership – who have moved this company forward. Today, we stand on the threshold of something bigger. Not only are we growing, but we are also influencing the future trajectory of the industry. And we are doing it the Gainwell way : with passion, perseverance, and an unwavering belief in what we're building together.

Thank you for being part of this remarkable journey. The road ahead is full of opportunity, and we're just getting started.

SUNIL KUMAR CHATURVEDI
CHAIRPERSON, GAINWELL GROUP





Every company has a growth story. Ours is about transformation – not just in what we do, but in how we think, where we operate, and what we stand for.

Gainwell is no longer defined by the boundaries we started within. Today, we are charting a new course – one that places us firmly on the global map. Across our Group Companies, from factory floors to boardrooms, it is our people, whose drive is to build companies that lead with innovation, deliver with precision, and inspire with their values.

As we look ahead, I envision a future where Gainwell continues to empower diverse voices, nurture talent, and build workplaces that inspire. For us, these aren't just goals; they are our promises.

Let's keep shaping a Gainwell that's bold in ambition, human at heart, and limitless in potential. Together, we will be building a future that's bold, inclusive, and unstoppable.

MEENA CHATURVEDI

VICE CHAIRPERSON, GAINWELL GROUP



CONTENTS

GAINWELL AT A GLANCE

Message from the Group Chief People Officer	01
Accelaron Solutions Private Limited	02 - 08
Gainwell Commosales Private Limited	09 - 30
Gainwell Engineering Private Limited	31 - 41
Gainwell Trucking Private Limited	42 - 48
Parasea Coal Mine Project Private Limited	49 - 53
Resurgent Mining Solutions	54 - 60
TIL Limited	61 - 79
Tractors Nepal Private Limited	80 - 89
Tulip Compression Private Limited	90 - 99
Rising Stars of Gainwell	100 - 101
A Note of Thanks	103

Innovations

Driving People & Culture

SUJOY BANERJEE

GROUP CHIEF PEOPLE OFFICER

True innovation in people and culture isn't about gadgets; it's about mindsets. While businesses are focussing on innovation in products and services, the most transformative breakthroughs are happening within the realm of people and culture. Data is being used with empathy and AI with ethics to design work that feels purposeful, inclusive, and brilliantly human. Leaders are blending empathy with agility, data-driven insight with human intuition, and vision with collaboration. Employees are being empowered to take control of their development and drive a culture of continuous learning.

The future of culture is rooted in care. Organisations are championing diversity, equity and inclusion, embedding holistic wellbeing programs, mental health support systems, and inclusive practices into their core strategies.

Our values at Gainwell guide every choice we make: Caring for one another, Collaboration across silos, Customer Centricity in every journey, Excellence in our craft, and Entrepreneurship that turns ideas into impact. When technology augments judgment and values anchor decisions, we unlock curiosity, courage, and compounding capability together.




Meet Gainwell Group

Gainwell Group, headquartered in Kolkata, is a diversified industrial and infrastructure equipment conglomerate operating across sectors such as construction, surface and underground mining, energy and power generation, transportation and logistics, and material handling.

With a strong “Make in India” focus, Gainwell has evolved from a trusted equipment dealer to a full-scale manufacturer and solutions provider.

The Group maintains long-standing partnerships with leading OEMs, including Caterpillar, BharatBenz (Daimler India Commercial Vehicles), Hyster-Yale and Manitowoc, Lintec & Linnhoff, Etnyre International, among others, bringing world-class technologies to India’s mining, construction, material handling, energy, and infrastructure sectors at large.







acceleron

— SOLUTIONS —

Acceleron Solutions Private Limited – Driving Innovation, Empowering Business

Acceleron Solutions, the technology arm of the 80-year-old Gainwell, stands at the forefront of digital transformation, delivering IT solutions that blend the 3Is: Innovation, Intelligence, and Impact.



From leading strategic IT and digital initiatives within the Gainwell Group to delivering world class solutions to global clients, Acceleron strikes a fine balance between strong internal alignment and wide external reach.

The journey is a story of continuous evolution—driven by technical excellence, deep domain expertise, and a shared commitment to shaping the future. The solutions designed and implemented for the organisation are not just technically sound but strategically aligned to business goals. The Mission? To enable organisations to perform better and integrate technology to develop into a smarter business platform.

Acceleron has a legacy of innovation, coupled with a wealth of experience spanning different sectors and global markets. The approach towards innovation is inclusive of adopting the latest technology, where the focus is on understanding real-world problems. Every solution is infused with practical insight, forged through collaboration, and designed for seamless scalability.

At the heart of Acceleron is a team of dedicated Subject Matter Experts, who are recognised for their years of experience in specific business domains—construction, mining, logistics, manufacturing, and more. The SMEs team ensures that the final product is both functional and strategically aligned.

Acceleron Solutions has built strong relationships with enterprises that are transforming their industries. With a focus on scalable, secure, and intelligent digital solutions, the company continues to be a trusted partner across sectors like manufacturing, healthcare, and energy. Acceleron takes pride in its successful collaborations with some of the most prominent organisations - Caterpillar, Exide Industries, Nephrocare Pvt. Ltd.

From global conglomerates to emerging market leaders, this organisation continues to deliver high-impact solutions that combine deep domain expertise with cutting-edge technology, for a sustainable, future-ready digital transformation.

Acceleron's Service Verticals

At Acceleron Solutions, our services span across diverse verticals—each tailored to address unique business challenges through domain-driven technology solutions. Our comprehensive portfolio ensures that organizations stay future-ready, agile, and competitive in a rapidly evolving digital ecosystem.





Enterprise Applications Ser-

Enterprise Applications are central to our services. We implement and manage platforms like SAP S/4HANA, Oracle E-Business Suite, and Salesforce CRM—covering core and extended modules to help enterprises automate processes, ensure compliance, and drive real-time, data-informed decision-making.

Software Development as a Service

Accelaron has developed tailored web, mobile, and cloud-based applications, where the clients receive future-proof legacy systems, migrate to new-age architectures, and integrate disparate systems through APIs and middleware, resulting in seamless and efficient operations.



IT Infrastructure & Cloud Services

We enable organisations to run their operations securely and reliably. This includes cloud migration, cybersecurity, network architecture, and disaster recovery planning—ensuring resilience and business continuity.

Data Analytics & AI Solutions

We empower clients to transform data into strategic insights. From building enterprise data lakes and interactive BI dashboards to developing AI/ML models, we help organisations anticipate trends, improve performance, and make data-driven decisions.



IT Consulting & Project Management

Our consulting services guide organizations through their transformation journeys. We help define IT strategies, set up governance frameworks, manage large programs, and support change management and user training to ensure successful adoption.

TALES OF INNOVATION

Driving Digital Innovation, Inside And Beyond The Gainwell Group

ARINDAM HARI
DIRECTOR & CHIEF
EXECUTIVE OFFICER

“Since our inception, Acceleron Solutions has served as the technology backbone of the Gainwell Group, built to address real business needs. Our development has been driven by a culture of innovation, accountability, deep business process understanding, and cross-functional collaboration. What began as a support function has now transformed into a full-fledged IT services company.

Over the past couple of years, we have expanded our presence both within the Gainwell Group and across global markets—onboarded marquee clients like Exide Industries, Caterpillar and other leading enterprises in India and abroad, strengthened our capabilities in SAP, software development, and IT infrastructure, and successfully



delivered complex transformation programs across sectors such as mining, manufacturing, logistics, and capital goods.

With the digital landscape rapidly evolving, we are helping enterprises to harness the power of cloud, AI, data analytics, and enterprise platforms. Our work on ERP and CRM implementations, process automation, and integrated systems enables real-time decisions, operational agility, and compliance readiness across the business.

Looking ahead, our priorities are clear—to strengthen our role as a strategic partner to the Gainwell Group companies and to expand our presence in both the Indian and international markets

Accelaron is committed to building a digital foundation that is both intelligent and sustainable. By integrating AI, analytics, and automation, we enable real-time decision-making and operational efficiency. At the same time, our solutions are designed to be energy-efficient, environmentally responsible, and aligned with long-term ESG goals—ensuring scalability, ethical, and helping businesses reduce their carbon footprint.



At Accelaron, we believe technology is not just about systems—it’s about shaping smarter businesses, resilient communities, and a more connected world. Accelaron is dedicated to being the strategic technology partner that empowers every customer within and beyond Gainwell Group to excel in a rapidly evolving digital and sustainable landscape.

Together, we shape a connected, intelligent, and future-ready Gainwell Group.”

Meet Our Leaders



Arindam Hari

Director & CEO



Anirban Dey Sarkar

Practice Head - IT Application



Roopsi Kaila

IT Infrastructure Head

Beyond Walls: Evolving Workspaces

A New Chapter Begins: Acceleron's First Corporate Office Inaugurated

Acceleron Solutions inaugurated its first official corporate office, located in the heart of Kolkata's technology hub—Salt Lake Sector V. This milestone represents a significant advancement in Acceleron's growth journey, showcasing its evolution from a high-performing IT wing to a standalone technology powerhouse with a strong identity and presence.



As part of its ongoing journey of innovation and transformation, Acceleron Solutions is proud to announce the upcoming launch of its Experience Center in Kolkata – a forward-looking initiative that seamlessly integrates technology, business, and customer experience under one roof. This state-of-the-art facility will serve not merely as a showcase of solutions, but as a dynamic environment where ideas take shape, products evolve, and customers engage with innovation in a truly immersive way.

News Bulletin



CIOK AI Adda (Kolkata) – Platinum Sponsorship

Acceleron proudly served as a Platinum Sponsor at the CIOK AI Adda held on 11 January 2025 at Taj Taal Kutir, New Town, Kolkata. The event spotlighted AI innovation across industries. Acceleron’s CEO, Mr. Arindam Hari, delivered key insights on the present and future of enterprise AI—reinforcing the company’s leadership in AI-driven digital transformation.



BCCI Business IT Conclave – Gold Partner

At the 16th BCCI Business ITC onclave—organized by the Bengal Chamber of Commerce & Industry—Acceleron participated as a Gold Partner. The conclave, which took place recently, brought together IT and business leaders to discuss digital infrastructure, cybersecurity, and scalable innovation.



Engagement with NASSCOM Ecosystem

Acceleron has intensified its engagement with the NASSCOM ecosystem by contributing to conversations on GenAI governance, GCC evolution, and digital talent development. As part of the broader industry dialogue, Acceleron is aligning with NASSCOM’s priorities in responsible AI adoption, skilling, and cloud-first innovation strategies. This includes participating in regional forums and thought leadership platforms.





GAINWELL



Gainwell Commosales Private Limited - Powering India's Growth with Legacy, Innovation & Global Partnerships

For over eight decades, Gainwell Commosales Private Limited has distinguished itself as a trusted partner for customers across the country.



Best known as Caterpillar's representatives across East & North India and Bhutan in the Construction, Mining, and Energy & Transportation sectors, Gainwell has played a pivotal role in transforming India's infrastructure landscape. Today, it includes partnerships with brands such as Etnyre International, Trackmobile-Zephir, Paus, Lintec & Linnhoff, Sitech India, Proman and Tulip Compression.

Dedicated to delivering comprehensive 'Solutions for Growth', Gainwell has forged strategic alliances with global OEMs while expanding its expertise beyond the core trading business. While the dealership business under the Gainwell CAT brand continues to be a key driver of growth, Gainwell has also entered specialised domains, such as underground mining,

where it now operates high-end equipment for mine development projects, refurbishes machines (giving them a second life), manufactures asphalt and concrete batching plants, road saving equipment, among other technology-powered offerings.

With an extensive network encompassing 108 locations throughout India and a team of nearly 3,000 highly skilled service professionals, Gainwell Commosales Private Limited delivers unparalleled maintenance services that have set the standard in the industry. This strategic nationwide presence enables Gainwell to provide exceptional support to clients who are actively shaping the future of India's infrastructure development.



TALES OF INNOVATION

Building Viksit Bharat: Smart Equipment Is Powering India's Infrastructure Revolution

MANAV KOHLI
EXECUTIVE DIRECTOR &
CHIEF EXECUTIVE
OFFICER

“India's infrastructure equipment industry stands at a pivotal moment. Valued at USD 10 billion and projected to reach USD 25 billion by 2030, this sector is not merely growing—it's transforming into the backbone of our nation's ambitious vision of becoming Viksit Bharat by 2047.

The scale of this transformation is staggering. At Gainwell Commosales, we have positioned ourselves at the forefront of this transformation through strategic partnerships and relentless focus on technological innovation.



Our partnership with Caterpillar, spanning over eight decades in India, has enabled us to deliver "Smart Iron"—IoT-enabled machines equipped with sophisticated sensors that monitor operations in real-time, predict failures, and enable proactive maintenance through smartphone applications.

But technology adoption goes beyond equipment. Through Sitech India, our franchise with Trimble Inc., we have championed Automated Machine Guidance in national highway construction, ensuring consistent quality and transparent progress records. This game-changing technology is helping India build better roads faster. Our partnership with Etnyre International Inc. brings scientific road maintenance equipment—micro surfacers, crack sealers, and pothole repair machines—that enhance durability and safety. Meanwhile, our association with Hermann Paus provides underground utility equipment that complements our Caterpillar mining trucks.

Our growth strategy centres on understanding evolving customer needs and offering complementary solutions. The Lintech and Linhoff range of asphalt and concrete plants work seamlessly with Caterpillar excavators and motor graders. This integrated approach, combined with customer-facing apps like Cat Central and IFMS, ensures customers remain connected and experience minimal downtime.

Service excellence forms another crucial growth lever. Our network of workshops can rebuild equipment economically and provide certified rebuilds that extend equipment life significantly.

This strategy has delivered results: 10% CAGR growth over the past eight years, with expectations of accelerating further. Our balanced presence across construction, mining, energy, and transportation provides resilience through economic cycles. From the Delhi Mumbai Expressway, Purvanchal Expressway, Lucknow Kanpur Expressway, Delhi Amritsar Katra Expressway, Delhi Meerut Expressway, Z-Morh Tunnel, Delhi Airport, Jewar Airport to providing backup power through Caterpillar gensets to Atal Tunnel, T3 Terminal, New Parliament, Delhi Jal Board, and to providing machines and aftermarket services in the coal mines of Tata Steel, West Bokaro, supporting Cat 789 trucks in Eastern Coalfields, and supporting a fleet of mining equipment in the 50 MTPA Siarmal mines in Mahanadi Coalfields - our equipment shapes landmark projects nationwide.

As India builds toward Viksit Bharat, Gainwell's partnership-driven approach and technological excellence position us to power the nation's infrastructure revolution."



Meet Our Leaders



Manav Kohli
Executive Director &
Chief Executive Officer



Sujoy Banerjee
Group Chief People Officer



Kajari Bagchi
Chief Financial Officer



Saikat Bardhan
Group Head - Legal,
Compliance & Internal Audit



Sitansu Nandi
Head - Resources Industries



Shekhar Agarwal
Head - CI Business

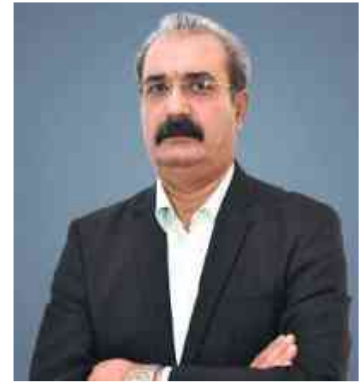
Meet Our Leaders



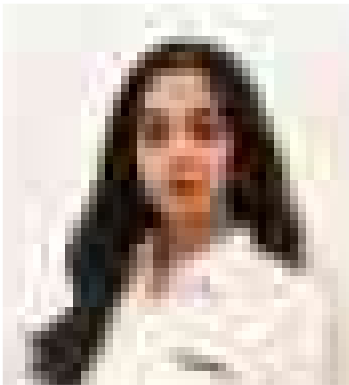
Anurag Raj Kakkar
Head - Energy & Transport



Rajib Lochan Dutta
Head C&L and
Group Head - Safety



Rajinder Kumar Pandita
Head - After Market
(CI, E&T & Facility Operations)



Akanksha Chaturvedi
Head - Corporate Strategy,
Offline Marketing and CRM



Rishabh P. Nair
Head - Brands & Content



Tanay Khandelwal
Head - Digital Initiatives



Surabhi Chaturvedi
Head - Business Excellence and
Growth Initiatives



Saroni Bhattacharya
Head - Human Resource

What We Stand For

Our Vision



We shall always be preferred partners to all our customers for providing innovative, diverse and sustainable solutions aimed at creating value for our stakeholders and society at large.

Our Mission

Design, manufacture, market and maintain best in class equipment for various key sectors including infrastructure, energy, mining and defence for domestic and global markets.



Attain consistent business growth and maintain market leadership through engaged & capable employees and products of global standards, while maintaining the highest level of commitment to organizational values and ethics.

Be a preferred source of cost effective, reliable, comprehensive and technology driven innovative solutions to ensure economic value addition

Be Future Ready, Inclusive and an Employer of Choice.

Be a socially responsible corporate citizen committed to environmental sustainability

Our Values



01 Customer centricity: Creating superior customer relationship to drive business sustainability

02 Collaboration: Working in a team to achieve common goal

03 Caring : A positive workplace with respect, empathy and well-being for others

04 Entrepreneurship : Providing an empowering environment to facilitate independence and decision making

05 Excellence: Adding value to every activity to achieve a higher standard across the organisation

Team Spotlight: SITECH

SITECH 3D Technology Drives National Pride by Transforming the Lucknow-Kanpur Expressway Project



The ambitious Lucknow-Kanpur Greenfield Expressway, set to revolutionise transportation in Uttar Pradesh by June 2025, stands as a testament to India's infrastructure prowess, powered by SITECH's cutting-edge 3D automated machine guidance and control technology. This technological marvel has not only accelerated construction timelines but established new benchmarks for precision engineering in the nation's highway development.

When the National Highways Authority of India (NHAI) sought to implement state-of-the-art solutions for this critical infrastructure project, they turned to SITECH's advanced 3D machine guidance technology. The technology deployment has transformed every aspect of the Rs 4,700 crore Expressway's construction, allowing PNC Infratech, the contractor engaged for this expressway, to achieve unprecedented efficiency and quality.



"The integration of SITECH's 3D automated machine guidance technology has been transformative,"—Mr. Saurabh Trivedi, Head – Sales at Gainwell, at the NHAI seminar on Automated and Intelligent Machine Aided Construction in January 2025. "What we're witnessing is not just road construction, but a digital revolution in infrastructure development that positions India at the forefront of global construction technology."

The Gainwell team, led by Mr. Trivedi worked closely with construction crews to implement five sets of SITECH technology on Motor Graders, two sets on Pavers, five sets on Soil Compactors, and two sets on Bitumen Compactors. SITECH's technology has enabled real-time digital documentation and monitoring of the project, creating unprecedented transparency. NHAI officials can now track construction progress remotely, receiving daily as-built data directly from machines equipped with the 3D guidance systems. This capability has revolutionised project oversight and quality control across the entire 63-kilometer expressway route.





The technology enabled construction approach has significantly reduced diesel consumption in subgrade and CSB layers, contributing to NHAI's commitment toward reducing carbon dioxide emissions. These sustainability achievements were highlighted during the NHAI seminar attended by the Honourable Minister of Road Transport and Highways of India, Sri Nitin Gadkari, who recognised the project's contribution to India's environmental goals

The Result? After completion, the 8-lane expressway will allow travellers to travel between Lucknow and Kanpur in just 35-45 minutes. Beginning from Shaheed Path in Lucknow and extending to Nawabganj in Kanpur, the route will connect numerous communities including Banthra, Bani, Datouli Kantha, Taura, Nyaurana, Amarsas, and Rawal Marg, fundamentally altering the region's accessibility and economic potential.



The success of SITECH's technology on this project has been so definitive that the Ministry of Road Transport and Highways of India has recommended its implementation across all upcoming national highway projects. As India continues its infrastructure revolution, solutions like these are helping build not just roads, but pathways to a more connected, efficient, and sustainable future for the nation.

Beyond Walls: Evolving

Our New Machine Rebuild Centre Unnati-II

Situated in the industrial hub of Greater Noida, Gainwell – Unnati-II stands as the region's foremost destination for comprehensive machine repair and rigorous testing services.

This state-of-the-art facility has been meticulously designed to handle the most demanding requirements with unparalleled efficiency and precision, making it the preferred choice for businesses seeking reliable machinery maintenance solutions.



Unnati-II Facility

Massive 45,000 sq. ft. Workshop Floor

- Divided into 12 specialised bays for efficient multitasking
- Supports large-scale machinery and multiple projects simultaneously
- Optimised layout for seamless workflow and faster turnaround times
- Spacious design enables unrestricted, in-depth inspections and repairs

Dedicated 20,000 sq. ft. Advanced Testing Facility

- Reflects Gainwell's commitment to quality assurance
- Post-repair machinery undergoes rigorous testing and calibration
- Performance verified against original manufacturer specifications
- Ensures full operational reliability, minimizing failures and downtime



Our New Machine Rebuild Centre – Unnati-II

The technical expertise available at Unnati-II is equally impressive. From routine maintenance procedures to complex component rebuilds, these professionals restore equipment to optimal operational condition using advanced tools and techniques aligned with industry best practices.



Unnati-II features thoughtfully designed professional amenities - The facility houses modern office spaces for administrative functions, a fully equipped conference room for client meetings and consultations, and a comfortable customer lounge where visitors can relax while awaiting service completion. The comprehensive service model used here ensures that when machinery leaves the facility, it's not just repaired but fully restored to peak performance capability, validated through empirical testing procedures.

Unnati-II's strategic location in Greater Noida, Uttar Pradesh, allows Gainwell to provide responsive, world-class service within convenient proximity to numerous industrial operations, eliminating long-distance logistics concerns associated with machinery maintenance.

For businesses seeking a maintenance partner, equipped to handle all machinery service requirements with professionalism and technical excellence, Gainwell – Unnati-II Machine Rebuild Centre provides the complete package: reliable repairs, validated performance, and a superior service experience from start to finish.



OUR COMMITMENT TO SOCIETY

CSR Update

Bringing Light to Naranyankuri: Project ROSHNI's Journey of Transformation

In the quiet rural landscape of Naranyankuri village, nestled within the Egra Gram Panchayat of West Bengal's Bardhaman district, a silent revolution is taking place. Project ROSHNI (Integrated Health, Nutrition, Education and Protection Initiative) is illuminating the lives of nearly 3,000 residents through a holistic approach to health, education, and child welfare.

The heart of ROSHNI beats with a singular purpose: to empower communities that have long remained in the shadows of development.

Through dedicated initiatives focusing on reproductive and child health services, the project is creating a support system for mothers and children who form the cornerstone of this rural society. Every pregnant woman, lactating mother, and eligible couple in Naranyankuri now finds themselves embraced by knowledge and care that was once beyond reach.

What makes ROSHNI truly remarkable? The understanding that sustainable change comes through empowerment, not dependency. By implementing Social and Behaviour Change Communication strategies, the project is nurturing informed decision-making within families about maternal and child health care. The collaboration with existing health infrastructure ensures that services are accessible and affordable to those who need them most.

The light of education shines equally bright within ROSHNI's vision. Children who once remained outside school gates now find pathways to learning, regardless of their abilities or circumstances. The project stands firm in its commitment to the Right to Education Act, ensuring that no child is left behind.

As ROSHNI reminds us, meaningful development isn't measured merely in numbers but in the brightened horizons of individuals empowered to shape their own futures.

Learning & Development Programs

DEI Sensitisation Workshop



A comprehensive organisational survey in partnership with Avtar was conducted as part of the ongoing journey towards building a more inclusive organisation to assess the acceptance of the idea and readiness.

This survey provided valuable insights into the current organisational culture and highlighted opportunities for growth in diversity, equity, and inclusion initiatives. Building upon these findings, a series of gender sensitisation workshops across various locations throughout the organisation are being implemented.

These workshops are thoughtfully designed with the intention of fostering a positive shift in the collective belief system regarding DEI principles. Addressing unconscious biases, challenging traditional perspectives, and promoting inclusive leadership practices. This initiative represents the commitment to fostering a workplace culture where every individual feels respected, valued, and empowered to contribute their unique talents and perspectives to a shared success.

News Bulletin

Global Construction & Infrastructure Sales Rally 2025: Celebrating Success and Charting Future Growth



In February 2025, Caterpillar hosted its prestigious "Sales Rally 2025" in Sri Lanka, bringing together key stakeholders to celebrate achievements and strengthen partnerships. The event reinforced Caterpillar's commitment to empowering teams, fostering strategic partnerships, and delivering unmatched customer value.

The rally focused on three strategic priorities:

- Enhancing customer success through a strong dealer network
- Simplifying ownership with advanced technology and financing solutions
- Ensuring seamless operations with top-tier service support

The GCI Rally, held biennially to motivate and celebrate dealer partners' performance, saw participation from approximately 45 GCI representatives and managers, along with senior leadership.

During the event, Caterpillar's GCI leadership team presented 2024 performance reviews and outlined ambitious plans for 2025, highlighting India's significant growth potential with targets for MHex to achieve over 50% PR (Preferential Rights) and 3% PINS (Portfolio Investment Scheme) growth.

Engineered Solutions

Construction & Quarry Cat® 320D3 Hydraulic Excavator

Built for tough excavation and material handling, the hydraulic excavators delivers controlled power and excellent stability. From roadwork to quarry benches, it keeps productivity high and fuel use efficient.



Surface Mining CAT 777 Off-Highway Truck

Purpose-built for demanding haul cycles, the off-highway trucks offer reliable load capacity and strong downhill control. In large open pits, it moves more material—safely, efficiently, and consistently.

Underground Mining CAT R1300G Underground Loader

Compact, rugged, and responsive—designed specifically for confined mine environments. The underground loaders boost ore handling efficiency while maintaining safety and operator comfort underground systems — they move the world, one container at a time.



Engineered Solutions

CAT Diesel Generator Set

Engineered for continuous, heavy-duty power delivery in remote or critical operations. High uptime, long life, and dependable performance define this industry workhorse



CAT Gas Generator Set

A cleaner, cost-effective power solution using natural gas for reduced emissions. Ideal for continuous load applications where reliability meets sustainability.

CAT Industrial Engine

A compact power unit that integrates seamlessly into industrial machinery. High power density and simplified serviceability keep equipment performing longer.



Engineered Solutions

CAT Marine Engine

Built to endure harsh seas while delivering dependable propulsion power. From commercial fleets to offshore support, it ensures reliable performance voyage after voyage. are tough.



CAT Oil & Gas Engine

Designed for high-load drilling, pumping, and pressure operations in rugged oilfield conditions. Reliability under extreme duty cycles keeps operations running without compromise.

CAT Microgrid Solution - Solar Power

An intelligent hybrid system blending solar energy with storage and diesel backup. It reduces fuel burn, lowers operating cost, and ensures seamless power availability.







ALLIED BUSINESSES

Allied Businesses - Building the Future of Construction and Mining

Allied Businesses, a division of Gainwell Commosales, is leading a transformation in India's construction and mining landscape. Under its bold Vision 2.0 – 2025, the company is focused on expanding partnerships,



strengthening its product portfolio, and delivering world-class, end-to-end solutions for the nation's growing infrastructure needs.

At the heart of Allied's success lies its commitment to technology and collaboration. Through its strategic partnership with Lintec Linhoff & Etnyre, Allied integrates advanced digital solutions into construction equipment – driving precision, productivity, and sustainability.

Global Partnerships, Local Impact

Allied Businesses continues to push boundaries through strategic alliances that bring world-class technology to India's infrastructure sector.

Lintec & Linnhoff (LLH) – Specialists in advanced asphalt batching plants, representing a strategic move to offer more comprehensive solutions for the infrastructure market.

Eurotec – A brand of Linnhoff, known for its high-quality concrete batching plants built with the latest industry standards and technologies.

Etnyre International – Offering a complete range of road repair and maintenance machines, including Road Savers, Asphalt Distributors, and Crack Sealers – proudly manufactured for both the Indian and US markets.



Together, these partnerships enable Allied to deliver high-performance infrastructure solutions that meet global standards while serving local needs and deliver integrated growth solutions and OEM-backed reliability across industries.



Expanding with the NPI Range

Through new partnerships and innovation, Allied is introducing a full range of attachments, Goodwin slurry pumps, and complete crushing solutions from Proman – expanding its presence across the construction, mining, and material-handling ecosystem.

Its NPI range further strengthens this portfolio, offering advanced hydraulic attachments such as sweepers, mulchers, augers, trenchers, drum cutters, breakers, and orange peel grabs. Each product is designed to enhance versatility, precision, and productivity across diverse applications.

By combining these technologies, Allied delivers a truly end-to-end equipment ecosystem, enabling customers to operate more efficiently, sustainably, and profitably.

Strengthening the Dealer Network

A key driver of Vision 2.0 is Allied's evolving dealer network model. This year, the company has added 15 new dealer locations, with five more scheduled to open soon; including a manufacturing facility in Pune.

This expanding network ensures comprehensive sales, service, and spare parts support – empowering dealers and customers to grow together, backed by Allied's technical expertise and product excellence.

At Allied, the goal is not just to manufacture & supply equipment – it's to build partnerships that power progress.

Shaping the Next Era

Together, Allied Businesses and Gainwell Commosales are building more than machines – they're building the future of construction and mining in India. Vision 2.0 – 2025 is not just a growth plan; it's a commitment to redefine excellence through every partnership, every project, and every innovation that carries the Allied name.

TALES OF INNOVATION

Expanding Horizons: Gainwell's Allied Business Division

MAGESH SWAMINATHAN

HEAD – HEAVY
EQUIPMENT & ALLIED
BUSINESS DIVISION

“Gainwell as an organization has taken a crucial step by diversifying into Allied Businesses. We are positioning ourselves as a one-stop solution for all customer needs, backed by a comprehensive and globally competitive product portfolio.

Through new collaborations with Lintec & Linnhoff (LLH), Eurotec, and Etnyre, we are introducing a new range of products that seamlessly complement our existing global lines. All manufactured at our Pune facility, which was chosen strategically – it’s the heart of India’s construction ecosystem. With leading industry players and a strong vendor base located here,



we have the right connectivity and ecosystem to scale efficiently while truly driving the Make in India vision.

We are integrating advanced technology at every level – not just in our final products, but in our manufacturing practices. Our plants operate as complete, automated quality assurance systems. At the core is a PLC-based control system that manages weigh-batching and material dosing with precision, removing operator variance and ensuring batch-after-batch consistency. We're not just giving customers data – we're giving them control over their product integrity.

On our Etnyre lines, for instance, every process is engineered for first-time-right execution. This eliminates rework, reduces cycle time, and ensures we maintain world-class quality for international markets.



We are building our footprint around the customer. We've already developed 15 dealer locations across India and are on track to expand to 20 in the coming months. This ensures that sales, service, and parts are always within reach – strengthening relationships and reliability.

Whatever we do, the customer remains at the center. Our mantra is simple – one team, one dream. We stand with our customers, support them 24/7, and strive for a win-win outcome in every partnership”





GAINWELL
ENGINEERING
Gain a better tomorrow

Gainwell Engineering Private Limited - Shaping the Future of Mining Across Continents

Gainwell Engineering Private Limited (GEPL) is a global manufacturing business with presence across the USA, Australia, and India. By combining engineering excellence



with customer partnership, Gainwell Engineering empowers the development of strong, sustainable infrastructure for tomorrow's challenges.

With customers spread worldwide, Gainwell Engineering is focused on enhancing productivity through optimised equipment utilisation and more efficient workforce deployment. Gainwell Engineering designs and builds a range of machines that support various aspects of mining operations, both on the surface and underground. These include the Highwall Miner, which enables safer coal extraction from exposed seams without the need for underground entry, and Continuous Miners, which are suited for room-and-pillar operations in coal mines. Feeder Breakers help manage material size before it reaches the conveyor systems, while Face Haulers and Shield Haulers are used to transport coal and heavy equipment within mines.

For utility tasks, Gainwell Engineering produces Scoops and Multi-Utility Vehicles that handle functions like material hauling, grading, and maintenance support.

Roof Bolters are also part of the lineup, playing a critical role in underground safety by securing mine roofs. The Gainwell Engineering equipment powers some of the world's most productive mines, while innovative approaches to automation and digitalisation are helping mining companies reduce their environmental footprint while improving safety and efficiency. A robust aftermarket support is delivered through the extensive global network spanning the United States, Australia, China, Russia, South Africa and India.

Gainwell Engineering is proud to be transforming the future of mining across four continents, making resource extraction more sustainable, safer, and more productive for communities worldwide.



TALES OF INNOVATION

Unearthing Tomorrow: Driving Growth Through Innovation And Sustainability

DIPANKAR BANERJEE
Whole Time Director &
Chief Executive Officer

“We believe the mining industry is poised for an exciting evolution over the next five years. This is primarily driven by a surge in demand for energy around the world and especially in emerging markets. Projections indicate that the global underground mining equipment market will reach approximately USD 28 billion by 2031, and we anticipate significant growth fueled by industrialisation and urbanisation of economies in India, China, Indonesia, and others. The transition towards sustainable practices and the adoption of advanced technologies will further enhance operational efficiencies, creating a vibrant landscape for innovation and investment.

Gainwell Engineering is actively embracing technological advancements with a strong focus on digitisation in mining equipment operations. The integration of digital technology enables real-time collection and analysis of operational data from machines, providing valuable insights into equipment performance.



The digitisation initiative has delivered tangible benefits in product maintenance and operational efficiency. By monitoring machine performance in real-time, potential issues can be identified and addressed proactively, leading to reduced equipment downtime and improved overall productivity. Easy access to operational data has streamlined troubleshooting processes and failure investigations, allowing for faster resolution of technical issues.

Our company recognises that underground mining inherently offers significant environmental advantages compared to open-cast mining. Underground mining minimises surface disruption, reduces visible environmental impact, and generally results in a smaller overall environmental footprint. By specialising in underground mining equipment, we're already aligned with more sustainable mining practices.

At Gainwell Engineering, we have implemented a systematic approach to extend the lifecycle of our equipment through component recovery. We carefully evaluate and recover usable components from equipment after their initial service life. We maintain dedicated facilities for rebuilding machines using a combination of recovered and new components. This circular economy approach significantly extends the useful life of mining equipment while reducing raw material consumption. Our company has established a significant foundation through the technology licensing agreement with Caterpillar Inc. for manufacturing underground room and pillar mining equipment. This partnership demonstrates our commitment to bringing world-class technology and expertise to the mining sector.



Within India, we are strategically exploring partnerships with local machine manufacturers. These collaborations are designed to strengthen our domestic manufacturing capabilities and create synergies that benefit the local mining industry while maintaining international quality standards. By developing a strong local supplier base, we have reduced our reliance on imported components, leading to lower production costs and more competitive equipment pricing.

In 2025, Gainwell Engineering has plans for significant product expansion in a continuous miner lineup. Additionally, we intend to cater to a growing demand for such equipment from international markets, including the United States & Australia.”

Meet Our Leaders



Dipankar Banerjee

Whole Time Director & Chief Executive Officer



Jason Edward Sizemore

Director



Adam Raine

Director

Meet Our Leaders



Jayanta Bhattacharya
Head - Manufacturing



Sharmistha Chakrabarty
Chief Financial Officer



Chandramohan Natarajan
Vice-President - Engineering &
Digital Manufacturing



Tanay Khandelwal
Head - Digital Initiatives

What We Stand For

Our Vision



We manufacture innovative, high-technology Capital Goods for the global market.

We shall always be the preferred partner to all our customers and strive to create value for our stakeholders and society at large.

Our Values



- 01** Collaboration: Working in a team to achieve common goal
- 02** Customer Centricity: Creating superior customer relationships to drive business sustainability
- 03** Caring : A positive workplace with respect, empathy and wellbeing for others
- 04** Entrepreneurship : Providing an empowering environment to facilitate independence and decision making
- 05** Excellence: Adding value to every activity to achieve a higher level of standards across the organisation

Beyond Walls: Evolving Workspaces

Gainwell Engineering grows its global footprint with its facilities in the USA and Australia

Gainwell Engineering has extended its global footprint through facilities in the USA and Australia. The facilities at Fayette County, West Virginia, USA and Newcastle, New South Wales, Australia support the whole ecosystem of energy security and help the company serve its global customers and future markets at a rapid pace.



The company is extending after-market spare parts and rendering service support to the existing active population of licensed Caterpillar Room & Pillar Equipment and Highwall Miner customers from these two offices.

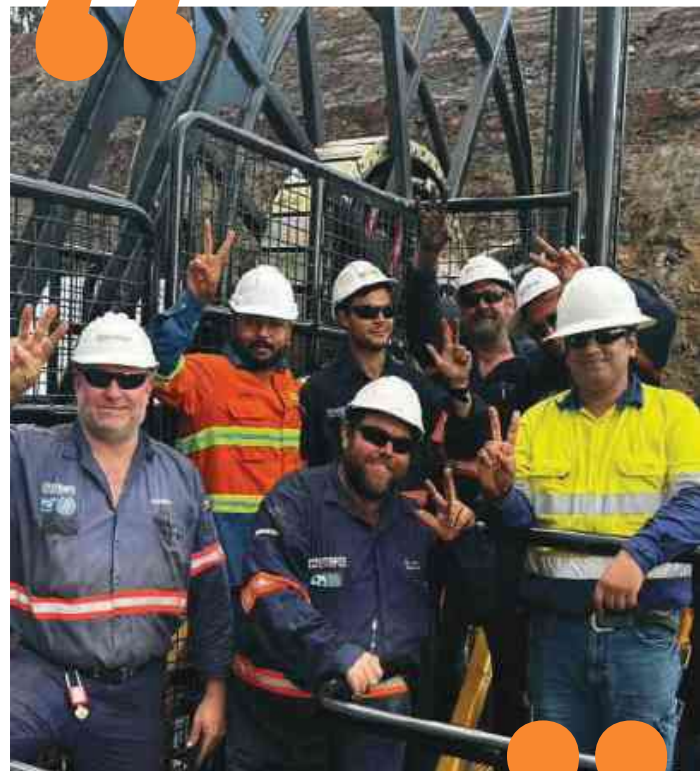
Gainwell Engineering operates through a global network of sales offices, parts warehouses and service rebuild centres in key mining regions around the world, extending exceptional value to all its customers.

The manufacturing business headquarters of the company is based in Kolkata, India, while the global business is managed through Gainwell Engineering Global Pte. Ltd., Singapore. With the state-of-the-art manufacturing facility at Panagarh, West Bengal, India, Gainwell Engineering supports global geographies to mine their underground mineral resources sustainably, efficiently and fairly.

Customer Chronicles

Gainwell Engineering's Highwall Miner is making waves at Vitrinite's Vulcan South mine in Queensland's Bowen Basin, Australia!

“A massive milestone was achieved at our Vitrinite Vulcan Mine in April 2025, with Kate, our brand new GHWM300M highwall mining unit, achieving maximum possible entry penetration for the first time. The entry yesterday achieved the maximum 290m penetration at an average of 24m per operating hour, producing 1800t of ROM coal at an average of 150t/hr. All of this was achieved during a significant weather event, impacting production at our open-cut operations. We are on track for our HWM coal at Vulcan to be the lowest cost, lowest impact and weatherproof HCC produced in Queensland”.



NICHOLAS WILLIAMS

Co-Founder, Managing Director of Vitrinite

Empowering Minds



Balanced Scorecard Workshop

The Balanced Scorecard Workshop was carefully designed with two primary objectives to enhance our organisation's strategic performance management.

First, the workshop provided employees, through interactive sessions and practical examples, with a comprehensive understanding of the Balanced Scorecard concept and demonstrated how individual goals are strategically aligned with this framework.

Second, the workshop was structured to enable employees to master the art of effective goal setting, equipping them with the necessary tools and methodologies to undertake goal-setting exercises for the 2024-25 fiscal year.

This practical knowledge helped participants formulate SMART (Specific, Measurable, Achievable, Relevant, Time-bound) objectives that aligned with both departmental targets and broader organisational strategies. By connecting individual contributions to organisational success, the workshop fostered a sense of purpose and clarity among team members.

Participants left the session with a clearer understanding of how their daily activities and performance objectives contributed to the company's strategic vision, creating a more aligned and motivated workforce prepared to drive our collective success in the coming year.



News Bulletin



GHW300M Highwall Mining system deployed at Vitrinite's Vulcan South mine

The Gainwell Engineering team has marked an incredible achievement. After months of dedication, collaboration, and engineering excellence, the team has successfully deployed the GHW300M Highwall Mining system at Vitrinite's Vulcan South mine in Queensland's Bowen Basin—the first operation of its kind in Australia!

This journey has been one of true teamwork across continents. The engineers and technicians from Australia, India and the USA poured their expertise and passion into manufacturing and assembling this revolutionary technology.

Manufactured under license from Caterpillar, it builds decades of technological refinement in the US mining industry.

The Gainwell Highwall Miner is transforming what's possible in coal extraction by accessing premium coking coal seams that were previously beyond reach. The Gainwell Engineering team designed this system with safety at its core, enabling remote operation while dramatically reducing environmental impact and operational costs.

What makes this achievement even more meaningful? The Vulcan South mine will now produce up to 2 million tons of premium coking coal annually while supporting 450 jobs for Australian families. This innovation reminds us that the coal industry continues to evolve through the ingenuity and determination of people committed to sustainable practices and cutting-edge technology.

Gainwell Engineering has written a new chapter in Queensland's mining history, and the credit goes to the dedicated teams who made this possible.

Engineered Solutions

Highwall Miner

Engineered for safe, cost-effective extraction from exposed coal seams, the Highwall Miner eliminates the need to send crews underground. Compact support requirements and efficient cut-to-ground operation make it a preferred choice for maximizing recovery with minimal risk.



Continuous Miner

Built for Room & Pillar mining, the Continuous Miner delivers powerful, uninterrupted cutting across varying seam heights. It maintains high productivity with precise control—keeping output steady even in the toughest coal conditions.

Feeder Breaker

Sized for the mining face, the Feeder Breaker reduces large coal to manageable sizes right at the source. This ensures smoother conveying, reduced equipment wear, and consistent downstream processing.







GAINWELL TRUCKING

Gainwell Trucking Private Limited - Driving Excellence in Mining Mobility

Gainwell Trucking Private Limited (GTPL) is an authorised channel partner for BharatBenz mining trucks, providing world-class trucking solutions to the mining and infrastructure sectors.



With an 80-year legacy of excellence and a deep-rooted commitment to customer success, GTPL delivers high-performance, durable, and efficient mining trucks designed to tackle the most demanding terrains and operations.

At Gainwell Trucking, we are committed to seamless after-sales support, robust service infrastructure, and a customer-first approach. With our extensive network and industry expertise, we help businesses maximize uptime, reduce operational costs, and achieve long-term success.

BharatBenz, a part of Daimler India Commercial Vehicles (DICV), a division of the global Daimler Group – houses a world-class manufacturing facility in Chennai, spread across 400 acres, and maintains a robust dealer network nationwide to support its transport business. Through this collaboration, Gainwell Trucking focuses on Middle Duty Trucks (MDT) and Heavy-Duty Trucks (HDT), specifically tailored for the mining sector. These trucks are primarily deployed in coal transportation, overburden (OB) removal, limestone mining, and iron ore or blue metal quarrying.

Supporting these operations, GTPL's territory includes West Bengal, Odisha, Jharkhand, Madhya Pradesh, and Gujarat—key regions that cover all major mining segments and their associated transportation needs.



TALES OF INNOVATION

Leading with Purpose: Transforming Vision Into Growth At Gainwell

DEEPAK JOLLY BUSINESS HEAD

This year marks the beginning of an exciting new chapter with the launch of Gainwell Trucking Private Limited, establishing a strategic partnership with Daimler India Commercial Vehicles (DICV). It is a key step in our mission to expand integrated solutions for India's core industries.

This venture reflects our commitment to advancing India's mining and infrastructure sectors with world-class products and dependable service support. Through Gainwell Trucking, we aim to deliver not just machines but complete value-driven solutions that empower our customers and strengthen our position as a trusted industry leader.

We take pride in our emphasis on meticulous business planning, network expansion, customer satisfaction, and change management initiatives that enhance operational efficiency and strengthen organisational capabilities. Working closely with our principal stakeholders, we manage end-to-end sales, marketing, and business development operations with a



constant eye on market trends and customer needs. Our goal remains clear – to build lasting relationships, deliver the right solutions, and ensure consistent growth and market leadership.

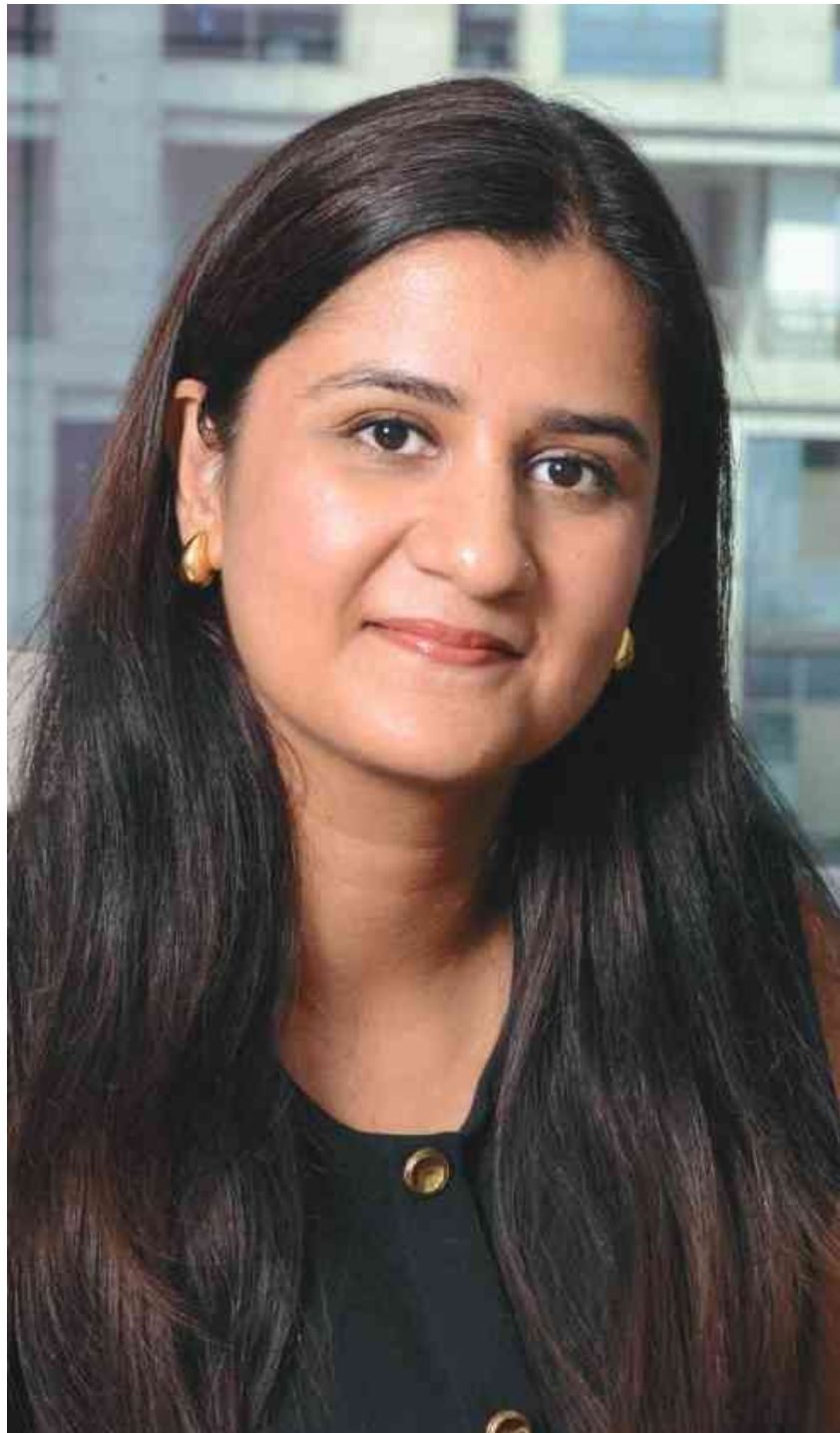
Gainwell Trucking brings the proven reliability of BharatBenz mining trucks to our customers, setting new benchmarks in performance, safety, and productivity. Through active participation, we have continually refined our understanding of the evolving business landscape. As we move forward with our new venture, Gainwell Trucking Private Limited, we are committed to leveraging our collective strengths and experience to give this business a strong competitive edge. I personally look forward to contributing my part to help the company achieve its next phase of growth.”

Gainwell Trucking: Driving the Future Of Mining Mobility

SURABHI CHATURVEDI
DIRECTOR – OPERATIONS

Gainwell Trucking marks a significant milestone in our journey to expand integrated solutions for India’s core sectors. This new venture, built in strategic partnership with Daimler India Commercial Vehicles (DICV), brings world -class BharatBenz mining trucks to the forefront of India’s fast-evolving mining and infrastructure landscape.

As a company deeply rooted in the mining ecosystem for over eight decades, Gainwell has consistently evolved to meet the changing needs of customers, from delivering machines and support solutions to now addressing a critical gap in reliable, high-performance haulage. With this partnership, we are combining Daimler’s globally proven truck platforms with Gainwell’s deep domain expertise, robust service footprint, and long-standing customer relationships.



The focus of Gainwell Trucking is clear: to redefine efficiency, safety, and total cost of ownership for our customers operating in some of the most demanding environments. These next-generation trucks are engineered for the realities of Indian mines, backed by our strong support network, parts availability, and service responsiveness.

Looking ahead, we envision Gainwell Trucking as a platform that not only meets current demand but also shapes the future of mining transportation, introducing advanced drivetrains, digital fleet intelligence, and sustainability-focused solutions. This is not just a product launch – it's a long-term commitment to innovation, performance, and partnership.

Meet Our Leaders



Deepak Jolly

Whole Time Director & CEO



Surabhi Chaturvedi

Director – Operations

Beyond Walls: Evolving Workspaces

Our Network & Facility – Strengthening the Backbone of Gainwell Trucking

As Gainwell Trucking expands its footprint across key regions—including North, East, and Northeast India, as well as Madhya Pradesh and Gujarat—in collaboration with Daimler India Commercial Vehicles, the company is laying the foundation for a strategically integrated support network that meet the evolving needs of the mining and infrastructure sectors.

To support this strategic growth, a comprehensive facility rollout is underway. The plan includes a well-distributed mix of sales offices, parts and service centers, aggregate workshops, and accident bays across critical locations.

Noida will serve as the corporate headquarters, while Asansol will be developed as the flagship facility. Singrauli and Jharsuguda will initially operate as aggregate facilities, with a roadmap to evolve into future flagship centers. Ahmedabad will also function as an aggregate facility. Meanwhile, Annapur, Talcher, and Dhanbad will be established as parts stores, activated based on regional requirements.

As part of this growing network, Gainwell Trucking is setting up 11 sales offices focused on customer engagement and fleet mobilisation, along with 9 parts and service centers to ensure maximum uptime and fast-track support for clients.

The infrastructure will also include three accident bays designed to handle structural and collision-related repairs.

A central machine stockyard in Walajabad, Tamil Nadu, will unify operations by streamlining logistics and ensuring efficient deliveries across all operational territories. This entire infrastructure will be anchored by the corporate headquarters in Noida, which will serve as the strategic command center—coordinating operations, driving business growth, and reinforcing Gainwell Trucking’s commitment to operational excellence and customer-centric service across India’s dynamic mining and infrastructure sectors.

News Bulletin



Daimler India Commercial Vehicles (DICV) has joined hands with Gainwell Trucking Pvt. Ltd. (GTP) in a key strategic move to strengthen the reach and support of BharatBenz mining trucks. At the heart of this partnership is the powerful BharatBenz 3532CM (8×4), built for demanding conditions and tailored to the needs of India's mining operations.



This collaboration goes beyond business—it’s about creating real value on the ground. From iron ore to coal and limestone, mining customers can expect faster service, less downtime, and strong on-site support thanks to a well-planned network of maintenance teams, express service channels, and spare parts hubs.



Speaking on the partnership, Rajiv Chaturvedi, President and Chief Business Officer at DICV, highlighted how this move is a direct response to evolving customer needs and growing infrastructure demands. GTP Chairman Sunil Chaturvedi also shared a clear vision to deliver unmatched value through an expansive, responsive service network.

Engineered Solutions

Built For Toughest Mining Roads 3532 Truck

Delivering high-performance haulage solutions for demanding mining and infrastructure environments, these trucks are built to handle heavy loads with strength and stability. Backed by dedicated sales and service support, they ensure dependable uptime, reduced operating interruptions, and consistent productivity on the toughest haul roads.







Parasea Coal Mine Project Private Limited - Powering India's Energy Future

Tucked within the coal-rich heartland of Burdwan, West Bengal, the Parasea Coal Mine Project is set to become one of India's most defining underground mining ventures.



Eastern Coalfields Limited (ECL), a subsidiary of Coal India Limited, entrusted Gainwell with the contract to develop and operate the Parasea Belbaid RO Underground Coal Mine, it wasn't just another milestone—it was a turning point in Gainwell's journey.

As the largest underground mining project ever undertaken by Gainwell, Parasea symbolizes more than scale. It reflects deep institutional trust from Coal India and reaffirms Gainwell's reputation for operational excellence built over decades of experience in India's mining sector.

To execute this ambitious 25-year project, Gainwell established a dedicated Special Purpose Vehicle—Parasea Coal Mine Project Private Limited (PCMPPL)—promoted by Gainwell Commosales Private Limited (GCPL).

The mission is clear: deliver the project safely, efficiently, and ahead of schedule while setting new standards in underground mining performance and innovation.

With an annual production capacity of 2.07 million tonnes and extractable reserves of approximately 35.62 million tonnes, Parasea is engineered for scale and sustainability.

Beyond numbers and milestones, Parasea embodies a broader vision—where advanced technology, sustainable operations, and responsible development converge. It's not just a mine in the making; it's a statement of how India's mining future can be both productive and progressive, fueling West Bengal's next wave of industrial growth.



TALES OF INNOVATION

Driving Underground Excellence: Setting New Standards In India's Coal Mining Landscape

ANURAG SRIVASTAVA
MANAGING DIRECTOR

When Eastern Coalfields Limited (ECL), a subsidiary of Coal India Limited, awarded Gainwell the contract to develop and operate the Parasea Belbaid RO Underground Coal Mine, it marked a defining moment in our Group's history. This is the largest underground project Gainwell has undertaken, a project that not only reflects the deep trust reposed in us by Coal India but also validates our legacy of operational excellence.

To deliver this prestigious 25-year contract, we established a dedicated Special Purpose Vehicle, Parasea Coal Mine Project Private Limited (PCMPPL), with a single-minded



focus to execute this landmark project safely, efficiently, and ahead of schedule. From the moment we received the Letter of Award in March 2023, every effort since has been directed toward one goal: to make Parasea a model of modern, mechanized underground mining in India.

The project involves a capital investment of more than 1,100 crore rupees, equivalent to around 130 million US dollars. This reflects the scale, ambition, and technological depth of our commitment. The investment ensures that Parasea is fully mechanised and equipped with the best available mining technology. The mine will deploy world-class continuous miners, road headers, and modern conveyor systems to make coal extraction safer, faster, and more efficient, eliminating physical strain on workers while improving productivity and predictability.

The Parasea Belbaid RO Underground Coal Mine, located in the Kunustoria Area of Eastern Coalfields, spans nearly 784 hectares with extractable reserves of 39.61 million tonnes. The mine will produce 35.62 million tonnes over the next 25 years, achieving a Peak Rated Capacity of 2.07 million tonnes per annum.

We have already made significant strides towards development. The mine design includes 5,000 meters of incline drivages, 335 meters of shaft sinking, 211 meters of shaft deepening,



and seven drift drivage totaling 1,300 meters. Land acquisition and environmental work covering over 400 hectares and 8.5 kilometers of nala diversion are progressing with full compliance and care for community well-being.

To ensure seamless coal evacuation, we are developing a two-kilometre surface belt conveyor system that will carry coal directly from the underground workings to the railway siding. This will enable dust-free, energy-efficient, and environmentally responsible for coal transportation.



Parasea represents the next generation of underground mining, mechanized, eco-conscious, and digitally governed. Using Continuous Miner technology, the mine eliminates the need for drilling and blasting, resulting in safer, cleaner, and quieter operations. This approach reduces dust, vibration, and noise while improving productivity and worker safety.

What makes Parasea truly special is that it symbolizes the evolution of Gainwell itself, from a trusted equipment solutions provider to a full-fledged developer and operator of large-scale mining projects. The collaboration between engineering, project, procurement, safety, and community teams has been seamless, reflecting the Group's growing integration and maturity.

The Parasea Coal Mine Project stands as a testament to Gainwell's ability to turn trust into achievement, vision into progress, and engineering into impact. It is a proud example of how the Group continues to drive efficiency, deliver value, and define new standards in India's coal mining landscape."





RESURGENT

MINING SOLUTIONS

Resurgent Mining Solutions Private Limited - Powering Progress Through Innovation and Precision

Established in 2011, Resurgent Mining Solutions Private Limited (RMSPL) has emerged as a dynamic partner in delivering pioneering mining and infrastructure services. Positioned at the heart of the industry's evolution, the company is steadily becoming a leader in contract mining, equipment rental, and maintenance.



As a specialist in mining operation contracts, roof bolting, HEMM maintenance, trading, product rebuilds, and custom manufacturing, Resurgent Mining stands at the forefront of service innovation. Every solution—from machine rebuilds to tailored manufacturing—is engineered to maximise productivity, ensure sustainability, and exceed industry standards, making the company a trusted force in advancing mining operations across the board.

In 2024, Resurgent Mining became part of the Gainwell Group, blending entrepreneurial agility with the infrastructure and credibility of a global leader. This partnership strengthens RMSPL's readiness to enter the Mine Development & Operations (MDO) space and supports its forward agenda — Scaling Operations, Deepening Systems, Expanding Footprint and Driving Innovation.

Leveraging its association with Gainwell, Resurgent Mining made its foray into underground mining through a strata control project for Eastern Coalfields Limited (ECL) — a milestone that marked its evolution into a trusted integrated mining solutions provider.

Over the years, Resurgent Mining expanded its footprint across major subsidiaries of Coal India Limited and SCCL, executing multiple projects in strata control and later venturing into Highwall Miner coal production and Continuous Miner underground mining alongside completion of an equipment maintenance contract at an African opencast site—marking the company's entry into international operations.

Continuous Miner Operations

Continuous Miner (CM) operations are among the most technically demanding areas in underground coal mining. Resurgent Mining has established robust execution models to ensure reliable and efficient CM deployment, with emphasis on operator training and skill enhancement, cycle optimisation for consistent performance, and safety-integrated work practices. These measures enable Resurgent Mining to deliver precise, dependable outcomes even in complex and challenging geological environments.



Highwall Mining Operations

Resurgent Mining provides end-to-end Highwall Mining solutions, covering mine planning, equipment deployment, operation, and maintenance management. With strong expertise in Highwall Miner technology, a focus on equipment availability and safety, and proven capability in recovering residual coal post-opencast mining, Resurgent Mining supports India's coal conservation priorities while promoting sustainable and high-yield mining practices.

Mining Equipment Maintenance Management

Resurgent Mining's maintenance strategy is built on predictive diagnostics and lifecycle engineering. By integrating condition monitoring, component health analytics, and OEM-grade maintenance standards, Resurgent Mining ensures high equipment availability, cost-efficient operations, and minimal downtime. The company manages a wide range of assets—including Continuous Miner packages, large HEMM fleets, and Highwall Miners—positioning it as a trusted partner for performance-driven service and maintenance contracts.



Resurgent Mining Solutions Private Limited Secures Landmark Projects with SECL and ECL

Resurgent Mining Solutions Private Limited (RMSPL) has announced significant new ventures with South-Eastern Coalfields Limited (SECL) and Eastern Coalfields Limited (ECL), further reinforcing its position as a leader in efficient, safe, and sustainable underground mining in India.

The Damini Underground (UG) Mine, located in SECL's Sohagpur Area, marks a transformative step in underground coal mining.

Over a nine-year production cycle, RMSPL will deploy, operate, and maintain two advanced Low Height Continuous Miner (LHCM) packages in Seam VIB and Seam V. These systems will enable high-yield, blast-free coal extraction with a focus on safety and operational efficiency.

The project targets an annual coal production of 0.72 million tonnes, amounting to a total of 6.48 million tonnes.

RMSPL is undertaking operations at the Jhanjra Underground (UG) Mine in ECL's Jhanjra Area. Over a five-year production period, the company will manage the operation and maintenance of the Standard Height Continuous Miner Package-2, provided by ECL. With a total coal extraction target of 2.6375 million tonnes, the project emphasizes seamless mechanization, prioritizing safety, efficiency, and sustainability.

TALES OF INNOVATION

Building A Smarter, Safer, And More Sustainable Mining Future

KAMESHWAR RAO

Whole Time Director &
Chief Executive Officer

“At Resurgent Mining Solutions, we proudly stand as a specialized mining operations and maintenance management company. Our expertise spans continuous miner technology, niche highwall miner applications for underground coal mining, hard-rock mining, and end-to-end HEMM maintenance management

Since our founding in 2011, we have steadily grown into a trusted name in mechanised underground coal mining. Our journey has been shaped by innovation, operational excellence, and a steadfast commitment to responsible mining practices. Over the years, our focus on reliability, safety, and sustainability has helped us build a strong presence across mining operations and HEMM equipment lifecycle management.



A landmark moment came in 2024 when we joined the Gainwell Group. This strategic partnership enhances our capabilities while preserving our entrepreneurial spirit. Supported by Gainwell's legacy of engineering excellence and a robust organizational framework, we are now empowered to pursue underground coal production contracts and highwall miner projects with renewed energy and ambition.

Our mission is clear: to unlock mining opportunities responsibly. Every mine we operate, every piece of equipment we maintain, and every process we optimize reflects our unwavering commitment to efficiency, safety, and environmental stewardship.

Looking ahead, we are expanding our operations, strengthening systems, and extending our footprint—both within India and globally. As we evolve, our goal is to emerge as a leading Mine Developer and Operator (MDO), executing end-to-end mining contracts that encompass planning, development, operations, and reclamation. With our proven expertise in underground mining technologies and equipment lifecycle management, Resurgent is well-positioned to deliver integrated mining solutions that align with national energy goals and global sustainability standards. Yet for us, true progress lies not only in growth but in the evolution of our people, processes, and purpose—ensuring every step forward is guided by responsibility and innovation.

At the core of Resurgent Mining Solutions is a belief that progress and responsibility must go hand in hand. Together with our partners, clients, and dedicated workforce, we are redefining what it means to mine smarter, safer, and sustainably for generations to come

Meet Our Leaders



Kameshwar Rao

Whole Time Director &
Chief Executive Officer



Susanta Patra

Group Head
Highwall Mining Operation



Ashok Kumar

Additional General Manager

News Bulletin



A Proud Moment for Resurgent Mining Solutions!

Resurgent received the ASSOCHAM Award for Excellence in Mining Technology of the Year! This recognition reflects our commitment to innovation and excellence in the mining industry.



Resurgent Mining Solutions: Pioneering Green Mining Excellence

Resurgent Mining Solutions is proud to be recognised as the Best Green Mining Organization of the Year at the ASSOCHAM Awards. As an emerging leader in mechanized mining, the approach combines innovation, efficiency, and sustainability to set new benchmarks in the industry.



Sustainable Mining with Highwall Technology

Resurgent Mining Solutions specialises in Highwall Mining Technology, an eco-friendly method that extracts coal from beneath the surface without disturbing surface features.

This remote-controlled, unmanned operation ensures:

- Zero waste generation
- Minimal energy & water consumption
- No drilling or blasting
- Dust-free & environmentally safe mining





**Vision turns
to value when
creativity
has a goal.**







TIL *Tractors India*

TIL Limited - TIL 2.0: A New Chapter of Growth and Innovation

Established in 1944 in Kolkata, TIL Limited has been a cornerstone of India's industrial evolution, as a leading name in material handling and infrastructure equipment. What began in pre-independence Calcutta as a bold plan by





Ramsay, Porter and Wilson to meet India's infrastructural needs has grown into an 80-year legacy of engineering excellence, innovation, and nation-building. Since January 2024, TIL Limited has been part of the Gainwell Group and has begun its transformation journey under its new management. But before we talk about the future, we must understand the legacy behind TIL.

In its early years, TIL made its mark by partnering with Caterpillar and later became the Indian distributor for Coles Cranes. Independence in 1947 only amplified the company's role, as India's developmental needs skyrocketed. The company's Kamarhati plant rolled out India's first indigenously manufactured mobile crane in 1962, followed by the country's first Rough Terrain crane in 1982. Since its origin, TIL's mission remained unchanged: to be a partner in lifting not just machinery but also Make in India ambition.

Over the decades, TIL continued to innovate and expand its presence. Its expertise spans Rough Terrain Cranes, Truck Mounted Cranes, Pick and Carry Cranes, and ReachStackers—equipment built for rugged, demanding environments. Beyond the

machines, the company's strength lies in a robust regional network, ISO 9001:2015-certified manufacturing hubs in Eastern India. TIL's technological edge has been sharpened through long-standing global alliances. Its relationship with Grove and Manitowoc, USA and Hyster-Yale has brought international standards in crane technology to the Indian market. Also, this also ensures strong capabilities in material handling through its Reach Stackers, forklifts, and empty container handler. These partnerships have helped TIL earn a reputation for safety, reliability, and global best practices.

In January 2024, a new chapter began, which sparked a remarkable financial turnaround and injected fresh energy into the company's mission. Today, TIL is not just a manufacturer. It's a name trusted by the Indian Army, Air Force, and Navy. It's a presence felt at construction sites, rail networks, oil refineries, and mining projects across the nation. As TIL moves ahead under the Gainwell banner, it carries a legacy rooted in integrity and a future built on ambition.



Strengthening India's Defence

When it comes to defence logistics, TIL Limited isn't just playing a part – it's moving the whole game forward - Engineering equipment that meets military standards, while being smart enough for civilian applications.

AKASH Transporter cum Loader Vehicle

The AKASH Transporter cum Loader Vehicle (TLV) is designed for transporting prepared articles and loading/unloading of articles onto the Akash Air Force Launcher (AAFL) and transporting them from their depot to the technical battery. The TLV system is designed and validated for operation in harsh



weather conditions (operating temperature: (-) 30 °C to + 55 °C; storage temperature: (-) 40 °C to + 70 °C; altitude: up to 4000 m above the mean sea level; relative humidity: 100%). TIL has supplied Bharat Electronics Limited (BEL) with TLVS for the Indian Air Force in 2024— because when it's mission-critical, there's no room for half-measures.



RT630C-Heavy-Duty Mobile Crane

Built tough for the toughest out there – TIL's crane, made specifically for the Indian Army, is truly a beast. Consider temperatures of $-15\text{ }^{\circ}\text{C}$ and $45\text{ }^{\circ}\text{C}$, and elevations nearing 4,500 m – and it still accomplishes the task. This machine,

boasting a lifting capacity of 30 tons and impressive off-road capabilities, is designed for most remote locations. It's no surprise that the Indian Army has recently inducted these units in 2024 to enhance its operational strength.

400 Strong. And Still Reaching Higher.

TIL Limited marked a major milestone in April 2025 with the rollout of its 400th Hyster-TIL Reach Stacker from the Kharagpur facility—an achievement built on a journey that began in 2010. From just three units in its first year to producing over 50 units annually, TIL's manufacturing growth reflects its strong engineering legacy.



The milestone unit, the Hyster-TIL RS46-33, boasts a 46-ton lifting capacity, engineered for heavy-duty performance in demanding logistics environments. With over 40 Reach Stackers exported to Australia, New Zealand, and Southeast Asia, TIL continues to leave a global footprint.

What is next?

TIL is gearing up for an exciting phase of growth, with new cranes, forklifts, and specialized equipment models planned over the next four years. Alongside this, the ReachStacker range is being upgraded with next-generation features, including advanced telematics for smarter monitoring and electrification options that support greater efficiency and sustainability.



TIL LIMITED SHINES BRIGHT AT

bauma

CONEXPO INDIA 2024

After an eight-year absence, TIL Limited—now operating under the Gainwell Group—returned to bauma CONEXPO India 2024 with remarkable poise and purpose. The comeback was met with palpable enthusiasm with over 6000 footfalls and social media engagement surged. Yet, the impact extended well beyond the digital realm. TIL garnered widespread media coverage, earning features in 26 distinguished industry publications. The unveiling of the Snorkel A62JRT boom lift proved to be a defining moment. More than a product launch, it was a statement of intent. At bauma CONEXPO India 2024, TIL did not merely seek visibility—it declared its resurgence with confidence, momentum, and a clear vision for the road ahead.

TALES OF INNOVATION



Transformation With Purpose, Progress With Impact

ALOK KUMAR TRIPATHI
WHOLE TIME DIRECTOR &
PRESIDENT

“At TIL Limited, we move with purpose, guided by the progress-driven spirit that shapes every step we take. Our clients know that when they invest in TIL, they’re not just buying equipment; they’re choosing reliability with grit. That’s more than a statement for us—it’s a promise.

If you ask me what’s behind TIL’s longevity, the reply would be that it’s in TIL’s DNA. We’ve been around for over 80 years, and through it all—leadership changes, market cycles, and technological shifts—the culture has remained remarkably consistent. It’s stable, flexible, and quietly resilient. Competence, after all, isn’t just about what you do; it’s about how well and how consistently you do it, no matter the climate.



Joining the Gainwell Group in 2024 marked a pivotal shift. But none of the changes were by accident—they were deliberate, strategic, and rooted in values. We call them V123 (11, 2 Es, 3 Cs:) Integrity, Excellence, Entrepreneurship, Customer Centricity, Caring, and Collaboration. These aren't just corporate buzzwords; they guide us through every choice we make. They're the compass we follow as we reinvent and strengthen TIL for the future.

Our move into the defence sector is a bold but natural progression. We are introducing advanced technologies to support the Indian Army, Navy, and Air Force. For us, it's not just about tapping into a new market. It's about contributing meaningfully to national security.

The next four years are mapped out with precision. We are focused on rejuvenation—optimizing operations, maximizing capacity, and forming the right strategic alliances. The goal is simple: expand our footprint both within India and internationally, while significantly boosting our tech capabilities. We are not just doing more—we are doing it smarter.

Infrastructure has always been close to TIL's heart. We're fully aligned with national

priorities like the National Infrastructure Pipeline and PM Gati Shakti. But we're not just ticking boxes. In sectors like deep soft-rock mining and defense, we're pushing for innovation—developing electric, sustainable, and future-ready solutions that help reduce reliance on imported capital goods. It's about building smarter while serving a broader national purpose.

So, what sets us apart in a competitive landscape? The full package. We are solution architects. From design and construction to ongoing maintenance, we offer unmatched value. Our facilities in Kharagpur & Kamarhati, our time-tested supplier network, and the long lifecycle of our products all speak for themselves. What we deliver is engineering that's both efficient and empathetic.

And while looking ahead, what excites us most is the coming fusion of AI and IoT into our equipment. We are talking about new levels of utilisation, safety, and digital control. Quality has always been our legacy—but in the future? That belongs to creativity, resilience, and bold ambition. The journey, as we see has only just begun."

What We Stand For

Our Vision



To be a globally trusted engineering solutions provider that adds sustainable value to the lives of people and the planet.

Our Mission

To deliver customer delight globally through engineering and service solutions, while living our values and building a safe, sustainable and engaging place to work.



01 Integrity: We are ethically unwavering. Integrity stands for honesty, strong morals, and a commitment to being truthful, transparent in one's actions and maintaining high ethical standards.

02 Excellence: We pursue greatness. Excellence stands for being passionate about offering the highest standards of quality and striving for superior outcomes.

03 Entrepreneurship: We embrace risks as opportunities. Entrepreneurship stands for innovation, taking calculated risks, and proactively seeking opportunities to drive growth and change.

04 Caring: We are, because we care. Caring stands for providing a safe, healthy, empowering, inclusive and sustainable place for people.

05 Collaboration: We achieve together. Collaboration stands for combining our skills and perspectives to achieve extraordinary results.

06 Customer-Centricity: We work to delight Customer centricity stands for creating a positive customer experience through world class products and services that add value to their business.

Meet Our Leaders

Board of Directors



Sunil Chaturvedi

Chairman & Managing Director



Saroj Punhani

Non-Executive
Independent Director



Lt. Gen. N.B. Singh (Retd.)

Non-Executive
Independent Director



Amit Mukherjee

Non-Executive
Independent Director



Alok Kumar Tripathi

Director & President



Ayan Banerjee

Director – Finance



Anurag Srivastava

Additional Non-Executive Director

Meet Our Leaders

Management Team



Pinaki Niyogy

Chief Operating Officer &
Chief Technology Officer



Arvind Rishi

AVP- Sales & After Market



Kanhaiya Gupta

Chief Financial Officer



Shamita Nandi

Chief Human Resource Officer



Chandrani Chatterjee

Company Secretary



Saikat Bagchi

Head – Supply Chain
& Commercial



Rishabh P. Nair

Head – Brand, Content & PR



Nithyanandan Elumalai

Head – Product Engineering



P. S. Vombatkere

Head – Naval Defence

Beyond Walls: Evolving Workspaces

TIL's Dankuni Warehouse

We don't just stock parts – we keep promises. TIL's cutting-edge warehouse in Dankuni exemplifies operational excellence and technological innovation. Positioned strategically near Kolkata's National Highway, this facility is meticulously designed to integrate with advanced Enterprise Resource Planning (ERP) systems, ensuring seamless coordination of inventory and logistics. The implementation of a sophisticated Warehouse Management System (WMS) optimises efficiency, enabling real-time stock tracking, precise deliveries, and minimal errors. More than a conventional storage space, this warehouse functions as a dynamic command center, meticulously organizing everything from mission-critical components to the smallest essentials. Its streamlined operations redefine the standards of accuracy and reliability in modern supply chain management.



WHAT MAKES THE DANKUNI WAREHOUSE A POWERHOUSE?

Strategic Location

Ideally situated close to Kolkata, just off the National Highway

ERP-Integrated

Real-time synchronization with enterprise systems

WMS-Driven

Better inventory, fewer mistakes, and quicker choices

All Models, All Parts

All product lines are fully covered

Zero Spoilage, Full Accuracy

Optimized for uptime rather than downtime

Speedy Fulfillment

Waiting isn't an option

Mumbai Office

Mumbai welcomes back TIL Limited as it embarks on a renewed journey in the western region. After nearly three years, the company proudly reopens its doors in 2024, marking not merely a return but a fresh beginning—strategically positioned to enhance proximity to operations and strengthen connections with valued clients in the western zone. This pivotal move is driven by a commitment to greater accessibility, prompt assistance, and deeper collaboration, laying out the foundation for an era of innovation and excellence.



Kamarhati Facility Upgrade

Exciting developments are underway at TIL's Kamarhati facility, where a transformative renovation is reshaping one of our legacy sites. This initiative goes beyond mere refurbishment, seamlessly blending time-honoured expertise with advanced technology to establish state-of-the-art capabilities. More than an upgrade, this revitalisation signifies TIL's unwavering commitment to fortifying its foundation and accelerating future growth. As innovation takes centre stage, this evolution marks a bold step toward enhanced operational excellence—one that signals remarkable progress ahead.

Kharagpur Facility Upgrades

At TIL Limited, progress extends beyond machinery—it encompasses both humanity and environmental responsibility. Our Kharagpur facility now proudly houses a 1000 kWp solar plant, harnessing clean energy to power operations while reinforcing our commitment to sustainable infrastructure. This initiative marks a pivotal step in our journey toward a future where technological advancement and ecological stewardship go hand in hand.





OUR COMMITMENT TO SOCIETY

CSR Update

At TIL Limited, Corporate Social Responsibility (CSR) is an unwavering commitment to fostering meaningful change. Over the past six years, TIL's initiatives have profoundly impacted lives, with focused efforts in healthcare, education, skill development, and community empowerment.

Flood Relief Efforts in West Bengal

In the wake of devastating floods in West Bengal in 2024, TIL promptly mobilised resources to provide relief to affected families. Essential groceries and food supplies were distributed ensuring immediate support for those grappling with hardship. This initiative reinforced TIL's commitment to humanitarian aid, demonstrating a deep-rooted responsibility toward community resilience and recovery.

Tata Steel Marathon 2024

TIL's participation in the Tata Steel Marathon 2024 in Kolkata exemplified its dedication to social engagement and philanthropy. By supporting an NGO through this event, TIL not only promoted community welfare but also strengthened its connection with society. The marathon served as a powerful platform to advocate for social causes, foster camaraderie, and encourage collective responsibility, further solidifying TIL's role in impactful social endeavors.



Customer Chronicles

We have been associated with TIL Limited for the last 23 years, ever since they started manufacturing ReachStackers, which is a vital machine for our container handling business.



SUDHIR GOEL

SHRI DURGA CRANE COMPANY



TIL and GIPL go a long way back, and GIPL bought the first ReachStacker from TIL Limited in 2008. We are happy to be back and have added another TIL HYSTER ReachStacker to our fleet this year, 2024.



UDAY CHAUDHARY

GURUDEV IMPEX PVT. LTD.



Partner Chronicles

It was really good to see the manufacturing process. It looks like really good quality, and I just think some of the technology that has been invested in the facility just adds credibility to the trucks. The test track is really impressive, and I understand this is the only test track in India for a ReachStacker.



BEN NEWEY

VP OF SALES & MARKETING
APIC AT HYSTER-YALE
MATERIALS HANDLING



The best part about the Kharagpur facility is that you get sheet metals that come in all different thicknesses, all of them, of fabrication for every component of the truck and chassis is built without any outside supply. All the semi-automated welding on the boom is very good. I found it very efficient the way they run.



TONY UNSWORTH

VP OF AFTERMARKET,
SERVICE, AND FLEET AT
APIC, HYSTER-YALE GROUP



The Business Bulletin



A Fresh Wave of Women Powering Progress – Welcoming Our New Women DETs

TIL 2.0 is not solely a story of machines and markets—it is, at its core, a story of people. When the company reemerged under the Gainwell Group in January 2024, one principle stood firm: diversity would not be a catchphrase. It would be a cornerstone.

Among the boldest shifts has been a commitment to gender inclusion. For the first time in the company's history, the hum of production at our Kamarhati and Kharagpur facilities is accompanied by the presence of women on the shop floor—Diploma Engineer Trainees (DETs) who are not just stepping into roles, but into history. They are challenging norms and rewriting the narrative one shift at a time.

Nearly 50 women have joined our ranks, spanning roles from apprenticeships to senior leadership. But this is not a numbers game. What they bring is deeper: new perspectives, renewed energy, and a culture of inclusion that is reshaping how we think, build, and lead.



Signed Again, Because Success Deserves Continuity

Hyster Dealership Agreement

Some partnerships only grow stronger with time. Since 2008, TIL Limited and Hyster-Yale Asia-Pacific have shared such a bond—reliable, resilient, and built on shared goals. With the recent renewal of their Dealer Sales and Service Agreement (DSSA) for another five years, the alliance enters a renewed phase of strength, bringing with it more power, sharper innovation, and an enhanced customer experience tailored for the Indian market.

This isn't merely a contract extension—it's a strategic alignment. The agreement blends TIL's deep-rooted expertise in domestic operations with Hyster's global scale and cutting-edge technology. Together, we are delivering faster service, more advanced training, and direct access to premium OEM solutions—eliminating middlemen and minimizing delays. At a time when market demands are intensifying, TIL is clearly looking ahead, choosing its partners with precision and intent.

TIL's Coffee Table Magazine

The Story Behind the Steel



Eight decades of monumental machines, daring undertakings, and refined engineering come together in TIL Limited's newly released Coffee Table Magazine—a volume that goes far beyond the bounds of a traditional corporate brochure. Polished, purposeful, and deeply visual, it's not a piece meant for idle flipping between meetings. It's a statement.

This publication captures the arc of TIL's evolution—from modest beginnings to becoming a name synonymous with heavy-lifting excellence. Inside, readers will find iconic milestones, groundbreaking equipment, vivid recollections, and a forward-looking glimpse into what lies ahead. More than just a magazine, it stands as a celebration of legacy, ambition, and the enduring power of purposeful innovation.

Engineered Solutions

Rough Terrain Crane

Engineered for the off-road challenge, TIL's Rough Terrain Cranes handle uneven ground with ease. Compact, agile, and powerful – they're the right choice for lifting where space is limited and conditions are tough.



Truck Crane

With high road efficiency and seamless inter-site movement, TIL's Long Boom Truck Cranes deliver greater reach and reliable lifting performance. Engineered for tight, congested job sites, they bring power where space is limited.

ReachStacker

From handling ports to bustling logistics hubs, TIL's ReachStackers deliver power, precision, and control where it matters most. With long reach, heavy-lift capacity, and intelligent systems – they move the world, one container at a time.







Tractors Nepal Private Limited - Bridging Distances with Determination & Dependability

Tractors Nepal Private Limited is a wholly owned subsidiary of Gainwell Commosales Private Limited (formerly known as Tractors India Private Limited). In a land where rugged terrain and relentless challenges define most endeavours, Tractors Nepal Pvt. Ltd. (TNPL)—the exclusive CAT service dealer in Nepal for over 24 years—has been delivering unparalleled support across some of the country's most remote landscapes, standing as a cornerstone of reliability and innovation.



TNPL's Presence Across Nepal

Spanning across major cities from east to west, with branches in key locations— Itahari, Pokhara, Nepalgunj, and our Head Office in Kathmandu Valley, TNPL has strategically positioned itself to ensure seamless service operations across Nepal. These branches serve as vital hubs for reaching some of the most inaccessible project sites across the country. Whether it's the mountainous terrain of Mustang in the North, the landslide-prone hills of Sindhupalchowk in Far-East or the extreme corners & dense jungle trails in Far-West, leading to hydroelectric and construction sites, TNPL Product Support Team is always prepared to respond within 16-24 hours.



Challenges of Operating in Remote and Rugged Terrain

Working in Nepal's remote and rugged regions brings intense operational challenges, with many sites inaccessible due to poor or non-existent roads & infrastructure. Engineers often travel via rough, narrow paths on trucks, tractors, or motorcycles— and in some cases, trek 7–10 hours through forests and mountains with heavy toolkits just to reach job sites amidst extreme weather conditions like heavy rainfall, landslides & snow.

OVERCOMING THE CHALLENGES: INNOVATION AND DETERMINATION

TNPL has effectively overcome the harsh challenges of operating in Nepal's remote and rugged landscapes through a combination of innovation, strategic deployment, and local collaboration.

01 Remote Engineer Stations: Residential Service engineers are permanently stationed in hard-to-reach areas like Beni, Taplejung, and Naiche, enabling quick response independent of branch locations.

02 On-Site Support: Under O&M contracts, dedicated teams are deployed directly at customer sites for fast, hands-on assistance.

03 Local Collaboration: TNPL works closely with customer teams, transport pros, and local contacts to overcome logistical hurdles, even during harsh weather.

04 Advanced Planning: Real-time weather tracking and proactive route mapping help TNPL deliver consistent, risk-mitigated service in extreme environments.



Airlifting of CAT Machines to Remote High-Altitude Sites

Delivering CAT 323D3 GSR Series Excavators to the remote mountain site

Due to high-altitude constraints, flight engineers imposed a 2,800 kg payload limit on the Mi-17 helicopter—well below its standard 4,000kg capacity. Each excavator was fully disassembled at base camp, including major components such as the boom, arm, bucket, hydraulic cylinders, engine, and cabin. It took 7 to 8 flights per unit to transport all parts. In total, four machines were airlifted using two aircraft: a Mi-17 from Shree Airlines for heavy lifting, and an AS 350 B3e (Airbus H125) from Prabhu Helicopters for lighter components and crew movement.



Chhujung Khola Hydropower Site

In the alpine meadows of Yak Kharka, nestled within Nepal's Sankhuwasabha district, just 4 kilometers away from the Nepal-China border, lies the isolated Chhujung Khola Hydropower Project—a 63 MW initiative by Customer: Sangrila Urja Ltd.



Braving the Elements

Upon delivery, TNPL's team began the reassembly process at approximately 3,000 meters above sea level. Working in freezing temperatures, frequent snowfall, low oxygen levels, and with minimal accommodation & limited food, the team braved extreme physical and environmental challenges and remained on-site for nearly a month and successfully reassembled & commissioned all 4 machines, making them fully operational.

This project was not merely about transporting machines—it was a demonstration of trust, a testament to commitment and a bold push beyond limits to support Nepal's infrastructure development. Through a combination of technical expertise, meticulous coordination, and unwavering resolve, TNPL reaffirmed that no location is too remote when service is driven by relentless determination.

TALES OF INNOVATION



25 Years of Unshakable Resilience & Service Commitment To Nepal's Economy & Growth

SHIBARJUN SAHA COUNTRY DIRECTOR

“Tractors Nepal Pvt. Ltd. (TNPL) proudly stands as the sole authorized service dealer for Caterpillar (CAT) equipment in Nepal for over 24 years. Built on a foundation of trust, reliability, and customer-first commitment, TNPL has played a pivotal role in powering Nepal's infrastructure, hydropower, and construction sectors – providing dependable service that keeps industries running. With our footprint spread across the country, TNPL has consistently delivered excellence in machine service, parts supply, and customer care across the country's most challenging terrains.

At TNPL, customer focus has always been at the heart of our strategy. Over the last 4 to 5 years, we have invested our time and resources extensively in expanding and upgrading our infrastructure to better serve our customers. From



establishing and strengthening three regional branch offices and parts distribution points to deploying workshop facilities in two different branches in Mid-Western and Far-Western region of Nepal, we've ensured that our support reaches our customers even in the most remote corners of the country.

Of course, operating in Nepal's challenging geography is not without its difficulties. We routinely work across rugged, high-altitude sites where road access is limited, and logistics are complex. Natural calamities such as landslides, earthquakes, and extreme weather are frequently occurring throughout the country.

Most recently in September '24, we overcame our toughest survival challenge when a devastating flood in Kathmandu completely swept away our Head Office, warehouse, and workshop, causing extensive loss and disruption.

However, the spirit of TNPL fights on. In a remarkably short period, our team came together to re-establish a Brand new Head Office and Warehouse, ensuring business continuity. While our new workshop is still under construction, we remain undeterred despite geographical & financial challenges, and TNPL is committed to restoring full capacity at the earliest.

As we move forward, we remain firm in our commitment to service excellence. The road may be tough, but with our team's utmost dedication, we will not only rebuild—but grow stronger than ever before."

Meet Our Leaders



Shibarjun Saha
Country Director



Gandiv Kafle
Head – Finance, Admin & Corporate Liaisoning



Sayantan Lahiri
Head – Product Support Head (CI and E&T)



Rajesh Adhikari
Manager – HR, Admin & Digital Marketing



Did You Know?

The largest excavator currently operating in Nepal is the CATERPILLAR 390FL, a 90 tonne giant in earthmoving equipment, deployed at Hongshi Shivam Cement Plant. Due to its enormous size, it had to be transported in 4 trailers in multiple parts and TNPL Service team assembled it on-site.

What made this feat even more challenging was that the operation took place during the COVID-19 pandemic—a period marked by serious health risks and severe logistical restrictions due to the nationwide lockdown. Yet, with no prior experience and without any physical presence & hands-on support from either Gainwell or Caterpillar, TNPL team solely completed the assembling and commissioning of the machine successfully in under two weeks, showcasing remarkable technical expertise & skill with operational efficiency and logistical acumen.

Beyond Walls: Evolving Workspaces

Overcoming the Toughest Survival Challenge – TNPL's Journey from Loss to Rebirth.

TNPL's head office and central workshop in Nakhkhu, Lalitpur, was the heart of the company's operations. It was a place where machines were repaired, relationships nurtured, and service delivered with pride. However, in September 2024, nature delivered one of the most devastating blows TNPL had ever faced.



The monsoon that year brought an unexpected flood in the Nakhkhu River. What began as steady rainfall on a weekend escalated into a disaster by Saturday morning. With the office closed, only a few employees managed to rush in, working late into the night to move equipment and safeguard documents. But all efforts were in vain, as the flood proved far more severe than anyone had anticipated. By morning, a powerful surge had submerged the entire premises under five feet of floodwater. Machinery, tools, infrastructure, and years of archived records were destroyed. Though no lives were lost, the emotional and material toll was immense.

Yet, in the wake of this loss, TNPL's spirit rose stronger. Even as the waters receded, the team returned, salvaging what little remained and rapidly shifting to temporary workspaces under strained conditions. Despite the lack of proper infrastructure, the determination to serve our customers never faltered. Makeshift stations were set up, operations resumed, and the company pressed forward – fueled by a shared sense of mission and unity.

Within just a few months, TNPL relocated its head office and warehouse to Talchhikhel. The move required swift planning, redesigning workflows, and re-establishing operations—all under tight timelines and limited resources. Today, the new Talchhikhel facility is more than just a physical space—it is a symbol of TNPL’s resilience.

While a new workshop in Kathmandu Valley is still under construction, operations have stabilized across branch workshops and the newly established warehouse. What TNPL rebuilt was not just infrastructure—it was a testament to the power of perseverance, teamwork, and an unbreakable commitment to serving with excellence.

Within just a few months, TNPL relocated its head office and warehouse to Talchhikhel. The move required swift planning, redesigning workflows, and re-establishing operations—all under tight timelines and limited resources. Today, the new Talchhikhel facility is more than just a physical space—it is a symbol of TNPL’s resilience.

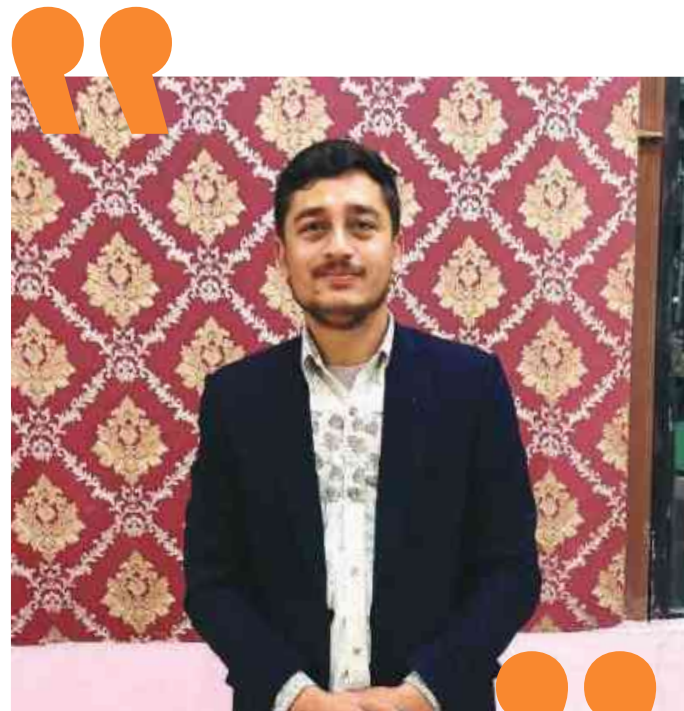
While a new workshop in Kathmandu Valley is still under construction, operations have stabilized across branch workshops and the newly established warehouse. What TNPL rebuilt was not just infrastructure—it was a testament to the power of perseverance, teamwork, and an unbreakable commitment to serving with excellence.

Vendor Chronicles

“We’ve worked with TNPL for over two years, supplying ATS panels for diesel generators. What stands out most is their commitment to quality and the way they treat partners—with professionalism and mutual respect.”



SHIVA KUMAR GIRI
MANAGING DIRECTOR,
TECHNO S. PVT. LTD.







tulipcompression

Tulip Compression Private Limited - Powering Progress: A Year of Milestones and New Frontiers

Tulip Compression Private Limited (TCPL), established in 2017, is a fast-growing company in India's clean energy sector. Founded with a mission to deliver operationally efficient and technologically advanced solutions, TCPL supports the nation's transition to a greener energy ecosystem.



Headquartered in Delhi, with a manufacturing facility in Unnati, Greater Noida, the company has built a robust presence across 18 states. Backed by the seedling and strategic guidance of the Gainwell Group, TCPL has grown into a trusted provider of an equipment portfolio spanning compression, storage, and specialized systems across the CNG, LNG, and Hydrogen ecosystems.



A Major Milestone in Natural Gas Compression

This year marked a significant achievement as we surpassed the delivery of 450 CNG compressors to the CGD industry. This accomplishment was made possible through our partnership and technology transfer agreement with Burckhardt Compression, a global leader in compressor technology. This collaboration has not only enhanced our manufacturing capabilities but also entrusted us with carrying forward Burckhardt's renowned legacy in India's CGD space.

Strategic Global Alliance with GRAF Industries, Italy

As part of its strategy to diversify and lead the clean energy transition, the company has entered into a strategic joint venture with GRAF Industries S.p.A., Italy. With decades of technical expertise, GRAF specializes in the development of advanced equipment for gas compression, processing, and dispensing applications. The alliance is aimed at accelerating the deployment of efficient, advanced, and future-ready infrastructure that supports India's transition towards cleaner energy and sustainable mobility.



Driving Clean Energy Recovery with Sapphire Technologies, USA

Reinforcing its commitment to sustainable innovation, the company has also partnered with Sapphire Technologies, USA, as its exclusive Indian partner. This collaboration focuses on the packaging and distribution of clean energy recovery technologies across the natural gas sector and broader industrial landscape. By introducing these cutting-edge solutions to the Indian market, the partnership supports greater operational efficiency, environmental responsibility, and more resilient energy systems.



TALES OF INNOVATION



Journey of Excellence & Innovation, One Step At A Time

R.K. SACHDEVA
TECHNICAL DIRECTOR

“At Tulip Compression Private Limited, we take immense pride in building an organization that stands on the pillars of integrity, innovation, and unwavering customer commitment. Our philosophy has always been progressive thinking ahead, acting proactively, and engineering every product and service to deliver not just satisfaction, but long-term reliability

From a technical standpoint, our teams remain relentlessly focused on performance and uptime. Our lifecycle maintenance programs, spanning 5 to 20 years, are designed to ensure near-continuous operation—with 98% equipment availability across our compressor packages. It’s not just about machines; it’s about delivering dependable performance and long-term value.

We recognize that the industry needs more than standardized equipment offerings, it needs smart, field-ready solutions. Our recently launched Composite CNG Dispensing Unit (CCDU) is a strong example of this approach. With its minimal footprint, flexible operation, forecourt installation approval, and enhanced safety features, the CCDU has already made a significant impact across the CGD industry. It's a solution, not just a product, and we're proud of the difference it's making.

In our continuous pursuit of technological leadership, we've partnered with Sapphire Technologies Inc., USA, to introduce the Freespin® Inline Turboexpander (FIT) to India. This cutting-edge technology harnesses energy otherwise lost in pressure let-down processes and converts it into clean, usable power—either on-site or through net-zero grid integration. FIT garnered exceptional attention at IEW 2025, and we are entrusted as the authorized packager and service partner for this transformative product in India.

Sapphire Technologies, with its state-of-the-art testing campus and backing from global energy leaders like Equinor Ventures and Chevron Technology Ventures, has redefined energy recovery solutions. Collaborating with them is a testament to our commitment to bringing world-class innovation to Indian soil.

We've also marked another major milestone by successfully supplying our first hydrogen compressor to one of India's largest integrated power companies. This was made possible through our valuable partnership with Graf Gastech, Italy, a company with deep expertise and a global footprint in advanced gas compression systems.

At Tulip, our journey is driven by determination and a deep-seated belief in delivering what truly matters—performance, reliability, and trusted assurance. With our real-time asset monitoring systems, future-ready product line, and a solution-oriented service ethos, we're not just preparing for the future—we're helping shape it."

TALES OF INNOVATION



Adapting, Innovating, Delivering: TCPL's Business Strategy For A Dynamic Energy Future

SANJAY SINGH PUNDIR

DIRECTOR - BUSINESS

DEVELOPMENT

"The landscape is shifting rapidly. With CNG vehicle adoption on the rise and the City Gas Distribution (CGD) sector expanding at an accelerated pace, we're witnessing a fundamental transformation in how energy infrastructure is being built and consumed.

At TCPL, we've aligned ourselves closely with this momentum. Our approach is rooted in strategic collaboration—both domestic and international—to continuously enhance and diversify our product portfolio. As global markets increasingly pivot toward natural gas as a transition fuel, we're seeing new windows of opportunity open across geographies, and we're positioning ourselves to capitalize on that.

One of our key strengths has been backward integration. It hasn't just improved our cost-efficiency; it has given us greater control over quality and lead times—both critical in high-performance applications. When you combine that with our tech-first mindset, it becomes clear how we're striving to push ahead of the curve. Our teams are diving deeper into first-principles thinking—designing from the ground up, not just iterating on legacy solutions.

Today's clients aren't looking for off-the-shelf answers—they need flexibility, adaptability, and tailored engineering. That's where TCPL has a unique edge. Our focus on customization allows us to move beyond the traditional vendor role. We're not just supplying a product—we're designing and implementing solutions that are aligned with each client's operational goals and site-specific challenges.

This shift has led to stronger, more strategic partnerships with our customers. They're beginning to see us not merely as equipment suppliers, but as long-term solution partners—committed to optimizing every aspect of performance, cost, and lifecycle value.

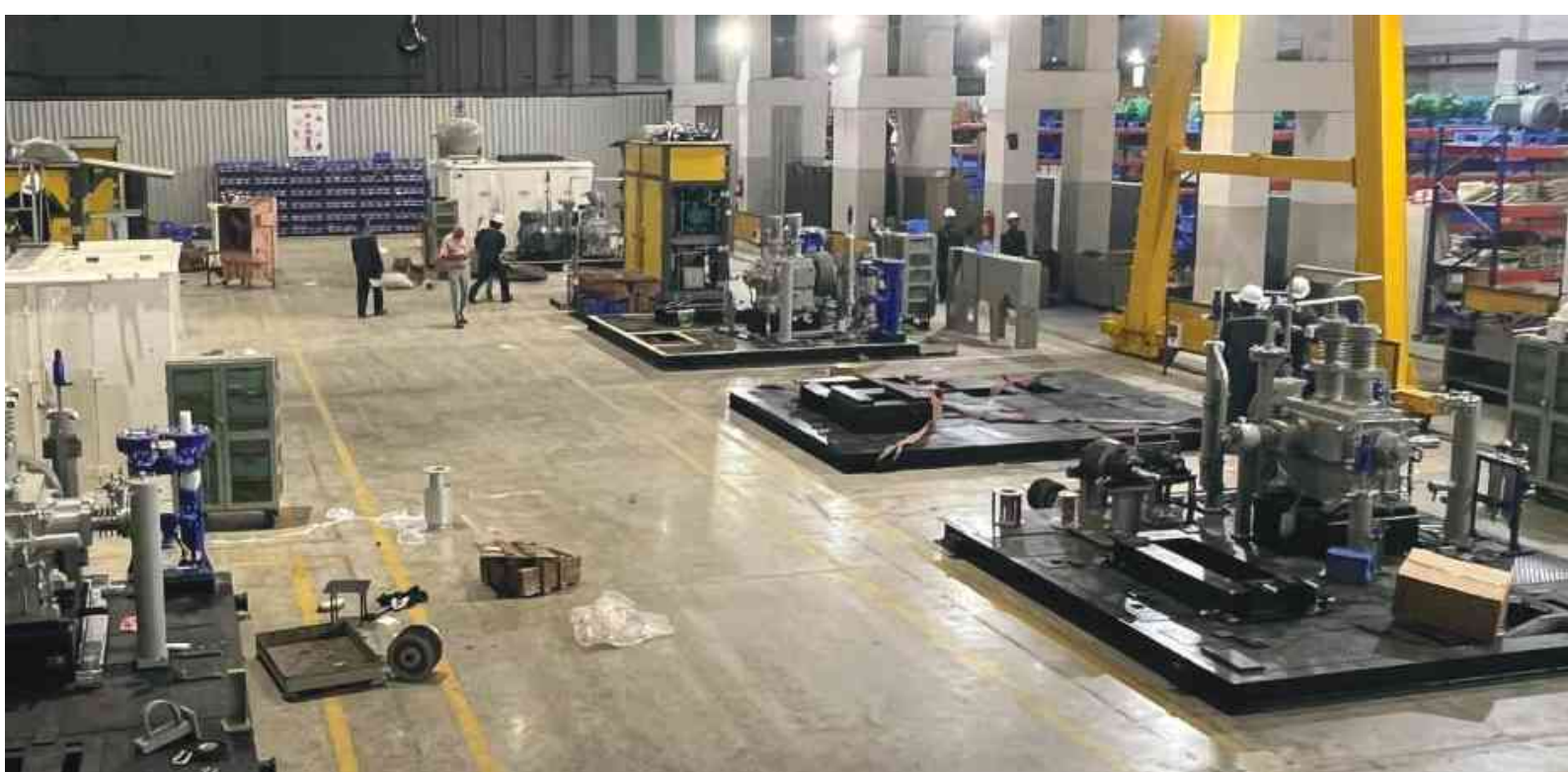
To keep up with surging demand, we've also commissioned a new facility that significantly scales our manufacturing capabilities. The pace at which we're growing is now outpacing the industry average—speaking volumes about both the demand for our solutions and the trust we've been able to establish in the market.

At TCPL, we're not just responding to change—we're building the tools, technologies, and relationships that will shape the next era of gas compression and energy infrastructure."

Beyond Walls: Evolving Workspaces

New Facility Launch - Unnati 3.0: Scaling For The Future Of Clean Energy Manufacturing

Unnati 3.0 marks the next phase in Tulip Compression's growth journey - a scalable, purpose-built production environment designed to meet the demands of today while anticipating the needs of tomorrow. The new facility enables higher throughput, supports streamlined material flow, and incorporates smart layout planning to reduce inefficiencies and enable faster turnarounds.



With expanded space, dedicated testing zones, and improved logistics integration, it creates the foundation for sustainable, high-performance growth. More than just an infrastructure upgrade, Unnati 3.0 represents a shift toward operational excellence—built to scale, built to adapt, and built to outpace.

Responding to Market Growth - The precursor

The decision to launch Unnati 3.0 was driven by sustained acceleration in demand across the energy and infrastructure sectors. With the rise of CNG vehicle adoption, growing industrial energy demand, and expanding infrastructure projects, the market is evolving at a rapid pace.

To stay ahead—not just keep pace—the company took decisive steps to enhance both capability and flexibility. The Result? Introduced modular skid-mounted compressors, cold-swap drive systems, and upgradable capacity units—delivering faster deployment, flexible energy switching, and scalable performance to meet rising demand for efficiency and adaptability.



OUR COMMITMENT TO SOCIETY

CSR Update

TCPL's CSR Commitment: Enabling Change Through Child Welfare

Established in 2024, Tulip Compression Private Limited (TCPL) developed its CSR policy with a clear focus: meaningful change begins with children—the foundation of future generations. Guided by this belief, the company is committed to supporting initiatives that promote child welfare and development, recognizing that investing in the well-being of children is essential for creating a stronger, more inclusive society. TCPL supports causes that nurture potential and drive long-term social progress.

In line with this vision, TCPL's CSR Committee selected Icha Foundation—founded by Madhu Tugnait—as its first partnered initiative. What began in 2010 as a one-woman effort has evolved into a compassionate, full-time home for abandoned children with physical and mental disabilities.

"I was personally touched to see the abandoned kids in the orphanage. Nobody would adopt these kids because of their disabilities. At that moment, I knew that I had found a mission in life. Since then, I have been working to bring up these children and provide lifelong support to them." - **Madhu Tugnait**

The foundation provides essential care, medical support, education, and a nurturing environment that fosters belonging and dignity. As part of this collaboration, TCPL contributed to a corpus fund that enabled the purchase of a vehicle, helping the foundation organize tours and outings for the children. These experiences are aimed at enhancing their quality of life and broadening their perspectives.

Icha Foundation continues to offer lifelong support to children with disabilities, helping them lead fulfilling lives and work toward self-sufficiency as empowered citizens.

News Bulletin



Tulip Compression Showcases Clean Energy Innovations at India Energy Week 2025

At India Energy Week 2025, Tulip Compression unveiled a series of clean energy technology breakthroughs, reinforcing its role in advancing an integrated and sustainable energy ecosystem through cutting-edge solutions.

The highlight was the launch of the Composite CNG Dispensing Unit (CCDU)—India’s first “CNG station on a skid”. This flagship product combines exceptional compactness with high throughput, offering a space-efficient solution ideal for rapid deployment and scalable fueling infrastructure.

Also featured were advanced CNG dispensers from GRAF Gastech India, including the country’s first 4-arm dispenser, developed to meet rising CNG vehicle volumes by enabling faster and more flexible fueling.

In collaboration with Sapphire Technologies, USA, Tulip introduced the FIT Turboexpander, a next-generation clean energy recovery solution now entering the Indian market. This innovation represents a significant step toward enabling more efficient and sustainable energy systems.

Engineered Solutions

200 GED CNG Compressor

A high-capacity compression system designed for efficient and continuous CNG filling operations.

Its robust performance and reliability support faster turnaround and reduced downtime at high-demand fueling stations.

CCDU – Composite CNG Dispensing Unit

A compact, modular dispensing solution engineered for safe and efficient delivery of CNG. Its lightweight composite build ensures mobility and ease of deployment across diverse fueling sites.

4-Arm Dispenser – GRAF GasTech

Designed for simultaneous multi-vehicle fueling, improving throughput at busy stations. Its ergonomic layout and precise metering enhance user experience while maintaining operational accuracy and safety.



RISING STAR OF GAINWELL



Charles Winter from Gainwell Engineering Pacific

From the early days of working on farm machinery in rural New South Wales, to now being a key part of our Pacific division, the journey of Charles Winter is a testament to the value of hard work and resilience. It's a story that embodies the spirit of perseverance—starting with a passion for machinery, overcoming challenges, and ultimately finding a place within a team that genuinely cares about both professional and personal growth.

We are incredibly proud to have witnessed the evolution of Charles, who began his career with us two years ago. We are also immensely proud of our entire Pacific division, whose collaborative spirit and expertise continue to inspire excellence and drive success in everything we do.

Here is Charles, reflecting on his journey -

About 10 years ago, I was helping my Par working on farm machinery 16 kilometres out of a country town called Stroud in rural NSW, mostly known for its convict-era buildings and picturesque landscapes, being home to only around 1,000 people. Learning how diesel engines work and how to stick weld.

Today, I work for a multinational mining engineering company producing some of the (in my biased opinion) greatest machines ever engineered. At an early age, I knew I wanted to work with machinery, but deep down I knew the journey was near impossible when I left school at the age of 14 to work for my father in a detailing shop. Little did I know leaving school would give me the experience and early networking skills that would lead me to making myself a good name and the connections that landed me opportunity after opportunity working for great (and not so great) companies and people.



About 2 years ago, I received a phone call from a gentleman, Mr. Steve Cox... That phone call led to a half-promise that if I could prove myself in Gainwell Engineering's Pacific Workshop over the course of a year, he would try his best to convince Mr. Paul Mulley into giving me an apprenticeship. Well, I found out that I had already convinced them after the first few months that I was worth it.

I now work with some of the best people in the industry who genuinely care and want to teach me about all facets of coal mining and general mechanical equipment. From the open-cut highwall miner's ability to cut coal that otherwise wouldn't be, to longwall operations and even the outdated but not forgotten room-and-pillar mining techniques... none of this would've happened if Gainwell didn't have a Pacific division and, more importantly, such a great bunch of people working together in camaraderie.



**Progress
starts when
ideas find
direction –
guided by the
compass of
vision.**





Abhishek Sharma
Tulip Compression



Rajesh Adhikari
Tractor Nepal



Riya Ghosh
Resurgent



Partha Putatunda
Gainwell Commosales



Rima Chaudhuri
TIL Limited



Sarmistha Ghosh
Gainwell Commosales



Sanjay Kumar
Gainwell Commosales



Trivshna Chopra
Gainwell Trucking



Saushtav Roy
Allied Businesses



Tania Mukherjee
Acceleron Solutions

A Note of Thanks

As we unveil the inaugural edition of our corporate magazine, we do so with a sense of pride and deep gratitude. This publication marks an important milestone in our Group’s journey – a collective effort to share our stories, values, and vision more closely with all who are part of our extended family.

We are immensely thankful to you, our readers, for being part of this beginning. Your support and encouragement inspire us to keep growing, learning, and celebrating the many achievements that define our journey together.

With sincere appreciation,
Team Gainwell Compass





1800 419 3356



info@gainwellglobal.com



gainwellglobal.com



Scan To Know More